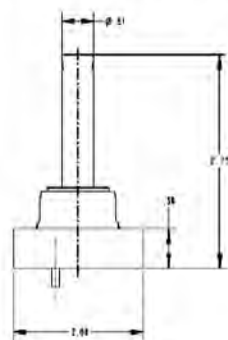


## MARINE CONDENSER REPLACEMENT PARTS

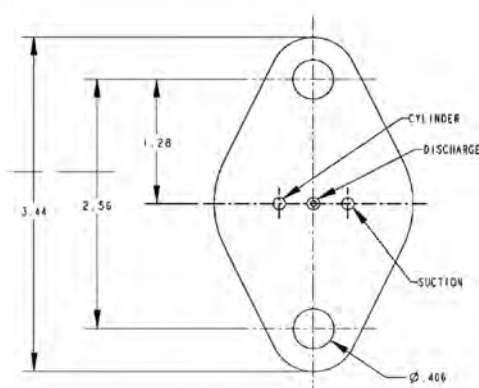
MODEL NO	REPLACEMENT PART NO		
	CONDENSER HEAD	CONDENSER REAR	GASKET
MHX-602B-4	HEAD0011457	HEAD0021178	GASKE020344
MHX-602D-4	HEAD0011457	HEAD0021178	GASKE020344
MHX-603D-4	HEAD0011457	HEAD0021178	GASKE020344
MHX-604D-4	HEAD0011457	HEAD0021178	GASKE020344
MHX-605D-2	HEAD0011457	HEAD0021178	GASKE020344
MHX-606D-2	HEAD0011457	HEAD0021178	GASKE020344
MHX-805A-2	HEAD0021323	HEAD0021330	GASKE020351
MHX-806A-2	HEAD0021323	HEAD0021330	GASKE020351
MHX-808A-2	HEAD0021323	HEAD0021330	GASKE020351
MHX-1005A-2	HEAD0021347	HEAD0021147	GASKE020368
MHX-1006A-2	HEAD0021347	HEAD0021147	GASKE020368
MHX-1008A-2	HEAD0021347	HEAD0021147	GASKE020368
MHX-1205A-2	HEAD0018960	HEAD0021161	GASKE020375
MHX-1206A-2	HEAD0018960	HEAD0021161	GASKE020375
MHX-1208A-1	HEAD0010742	HEAD0010742	GASKE020375
MHX-1208A-2	HEAD0018960	HEAD0021161	GASKE020375
MHX-1210A-1	HEAD0010742	HEAD0010742	GASKE020375
MHX-1405B-2	HEAD0010569	HEAD0011576	GASKE017655
MHX-1406B-2	HEAD0010569	HEAD0011576	GASKE017655
MHX-1408B-2	HEAD0010569	HEAD0011576	GASKE017655
MHX-1410B-1	HEAD0019682 EPOXY	HEAD0021435 EPOXY	0HC141D
MHX-1608B-1	HEAD0021435 EPOXY	HEAD0021435 EPOXY	0HC141D
MHX-1608B-2	HEAD0010711	HEAD0018946	GASKE017781
MHX-1610B-1	HEAD0021435 EPOXY	HEAD0019682 EPOXY	0HC141C

## EMERSON 703RC UNLOADER VALVE

### DIMENSIONAL DATA



P4602



P4602B

NOTE: Dimensions shown are in inches. Fractions (decimal).  
NOTE: Coil sold separately.

### APPLICATION

- 3-Way Unloader Valves
- Electrically operated valve for compressor unloading

### FEATURES

- Stainless and brass construction
- OEM drop-in replacement

### SPECIFICATIONS

- Maximum working pressure: 500 psig
- MOPD 300 psig
- Drop-in replacement for Copeland part number 510-0212-00

### NOMENCLATURE

Example: 703RBVLC

703RC	VLC
Valve Series	Coil*

NOTE: Valves are shipped without the solenoid coils (VLC= Valve Less Coil).

See coil section of catalog for information.

PCN*	DESCRIPTION
065131**	703RC-001 AMC 120/50/60
65132	703RC-001 AMC 208-240/50-60
065126**	703RC-001 VLC

\*\*Standard Product Offering.

\*Product Code Number.

NOTE: Body gasket not included. Consult compressor manufacturer for body gasket information.

# Compressors, Chillers & Condensers

Compressors, Chillers, Condensers

Motors

Electrical

Heating Components

Indoor Air Quality

Thermostats

Oils & Chemicals

Accessories, Supplies & Commodities

Tools & Instruments

Refrigeration

## COMPRESSOR VALVES & KITS

### MUELLER COMPRESSOR VALVES & KITS

#### THE INDUSTRY STANDARD

Mueller's compressor valves demonstrate a backseating design, constructed so that the stem forms a seal against a seat whether the stem is full forward or backward. This design allows complete isolation of service when the valve is either fully open or fully closed. In the intermediate position, specialized packing allows gauge and charging port caps and plugs to be accessed without refrigerants loss. Cross reference information is provided to assist in the selection process for all major compressor manufacturers in the industry.

Copeland No	Kit	Copeland No	Kit
998-0510-04	A 17510	998-0510-14	A 17517
998-0510-05	A 17511	998-0510-15	A 17518
998-0510-06	A 17512	998-0510-16	A 17519
998-0510-07	A 17513	998-0510-17	A 17520
998-0510-09	A 17525	998-0510-18	A 17521
998-0510-10	A 17527	998-0510-19	A 17522
998-0510-11	A 17526	998-0510-20	A 17523
998-0510-12	A 17515	998-0510-21	A 17524
998-0510-13	A 17516		

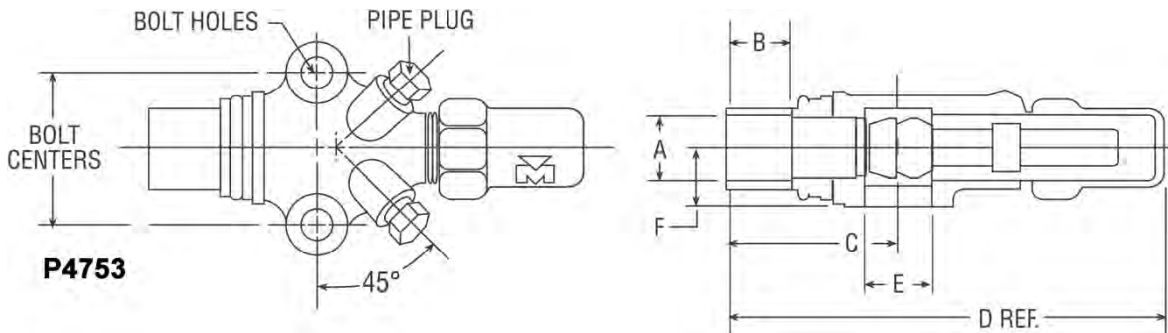


#### ADVANTAGES:

- Complete service kit including valve body, mounting bolts, cap, and gaskets.
- Compatible with all new refrigerants and oils.
- 700 psig maximum working pressure
- All valves 100% tested.
- Recognized under component program of underwriters laboratories for use in the USA and Canada.

### BRASS COMPRESSOR VALVES

Double Port - 45° Flare Type - Steel Cap



PART NO	Kit	A	C	D	E	F	BOLT CENTERS	DIA BOLT HOLES	PIPE PLUG SIZE	FLANGE THICKNESS	Valve Wt	Kit Wt
A 16302	A 17518	3.8	1-3/4	4-7/16	9/16	5/8	1-5/8	11/32	1/8	7/8	1.2	1.24
A 16303	A 17519	1.2	1-7/8	4-11/16	9/16	5/8	1-5/8	11/32	1/8	7/8	1.17	1.2
A 16304	A 17520	5.8	2	4-13/16	9/16	5/8	1-5/8	11/32	1/8	7/8	1.23	1.27

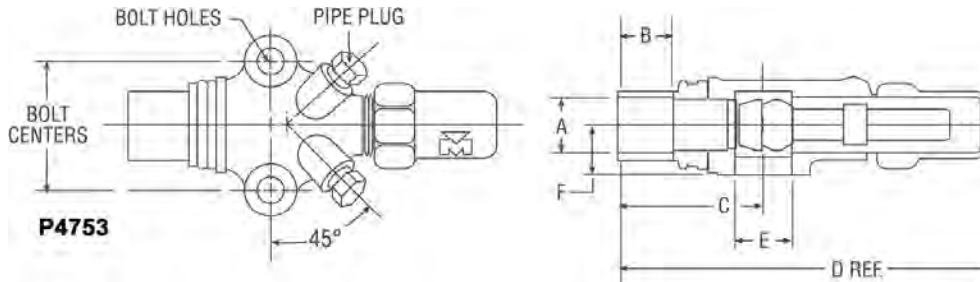
# Compressors, Chillers & Condensers

## COMPRESSOR VALVES & KITS

### MUELLER COMPRESSOR VALVES & KITS

#### BRASS COMPRESSOR VALVES

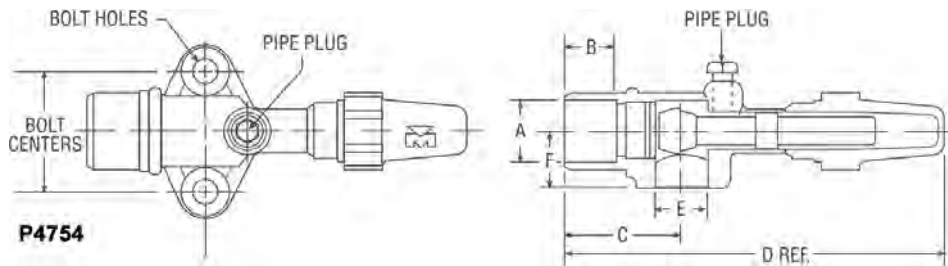
##### Double Port - Solder Type - Steel Cap



**P4753**

PART NO	Kit	A	B	C	D	E	F	BOLT CENTERS	DIA BOLT HOLES	PIPE PLUG SIZE	FLANGE THICKNESS	Valve Wt	Kit Wt
A 16307	A 17510	3/8	5/16	1-1/4	4-5/64	9/16	5/8	1-5/8	11/32	1/8	7/8	0.69	0.73
A 16308	A 17511	1/2	3/8	1-13/32	4-13/64	9/16	5/8	1-5/8	11/32	1/8	7/8	0.86	0.89
A 16309	A 17512	5/5	1/2	1-1/2	4-1/2	9/16	5/8	1-5/8	11/32	1/8	7/8	0.88	0.92

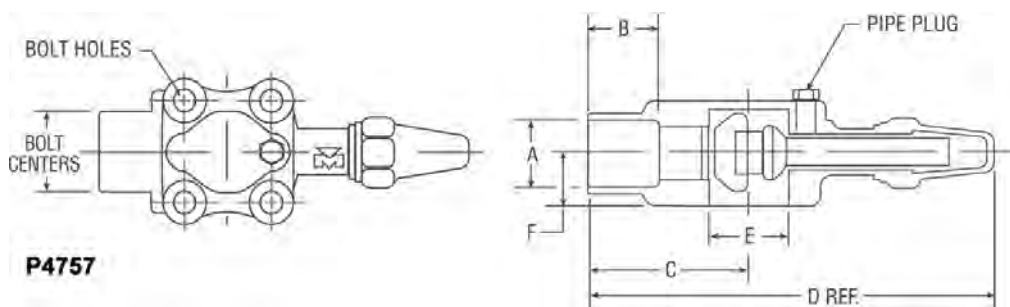
##### Straight Port - Solder Type - Plastic Cap



**P4754**

PART NO	Kit	A	B	C	D	E	F	BOLT CENTERS	DIA BOLT HOLES	PIPE PLUG SIZE	FLANGE THICKNESS	Valve Wt	Kit Wt
A 16310	A 17517	3/4	5/8	1-29/32	6-9/16	13/16	7/8	1-5/8	11/32	1/8	1-21/64	1.64	1.69
A 16311	A 17515	7/8	3/4	1-31/32	6-9/16	13/16	7/8	1-5/8	11/32	1/8	1-21/64	1.63	1.67
A 16317	A 17528	7/8	3/4	1-31/32	6-1/2	13/16	7/8	1-5/8	11/32	1/8	1-21/64	1.63	1.68
B 32197	A 17529	7/8	3/4	1-31/32	6-9/16	13/16	7/8	1-3/4	11/32	1/8	1-21/64	1.42	1.69
A 15500	--	1-1/8	29/32	2-1/16	6-9/16	13/16	7/8	1-5/8	11/32	1/8	1-21/64	1.66	--
A 16312	A 17516	1-1/8	29/32	2-1/16	6-9/16	13/16	7/8	1-5/8	11/32	1/8	1-21/64	1.66	1.71
B 33367	A 17530	1-1/8	29/32	2-17/64	6-9/16	1-1/8	7/8	1-3/4	11/32	1/4	1-21/64	--	--

##### Flange Union - Solder Type - Brass Cap



**P4757**

PART NO	Kit	A	B	C	D	E	F	BOLT CENTERS	DIA BOLT HOLES	PIPE PLUG SIZE	Flange Bolt Centers	FLANGE THICKNESS	Valve Wt	Kit Wt
A 16313	--	3/4	5/8	2-5/16	7-11/32	1-1/4	1-1/4	2-3/4	17/32	1/8	1-5/8	1	3.93	--
A 16314	A 17527	7/8	3/4	2-5/16	7-11/32	1-1/4	1-1/4	2-3/4	17/32	1/8	1-5/8	1	3.9	4.05
A 16315	A 17525	1-1/8	29/32	2-15/32	7-1/2	1-1/4	1-1/4	2-3/4	17/32	1/8	1-5/8	1	3.88	4.03
A 16316	A 17526	1-3/8	31/32	2-15/32	7-1/2	1-1/4	1-1/4	2-3/4	17/32	1/8	1-5/8	1	3.66	3.8

# Compressors, Chillers & Condensers

Compressors, Chillers, Condensers

Motors

Electrical

Heating Components

Indoor Air Quality

Thermostats

Oils & Chemicals

Accessories, Supplies & Commodities

Tools & Instruments

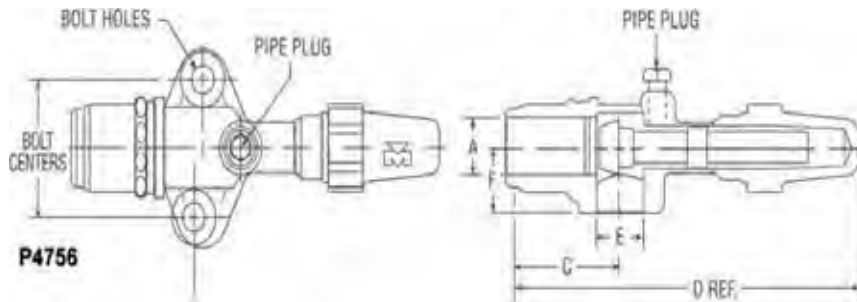
Refrigeration

## COMPRESSOR VALVES & KITS

### MUELLER COMPRESSOR VALVES & KITS

#### BRASS COMPRESSOR VALVES

*Straight Port - 45° Flare Type - Plastic Cap*



PART NO	A	C	D	E	F	BOLT CENTERS	DIA BOLT HOLES	PIPE PLUG SIZE	FLANGE THICKNESS	Valve Wt
A 13166	3/4	2-3/8	7	13/16	7/8	1-5/8	11/32	1/8	1-1/4	1-7/8

*4-Bolt Mounting Style - Solder Type - Flat Gasket Surface - Plastic Cap*

PART NO	Kit	A	B	C	D	E	F	BOLT CEN-	DIA BOLT	PIPE PLUG	Valve	Kit Wt
B 32807	A 17532	1-1/8	29/32	2-23/32	7-5/8	1-9/16	1	2-1/2	17/32	1/4	3.88	4.03
B 32808	A 17533	1-3/8	31/32	2-23/32	7-5/8	1-9/16	1	2-1/2	17/32	1/4	3.66	3.80
B 32930	A 17534	1-5/8	1-3/32	1-3/32	7-5/8	1-9/16	1-1/32	2-11/2	17/32	1/4	3.90	4.05

## CAST IRON COMPRESSOR VALVES

*4-Bolt - Cast Iron Compressor Valves*

PART NO	Kit	A	B	C	D	E	F	BOLT CENTERS	DIA BOLT HOLES	PIPE PLUG SIZE	Flange Bolt Centers	Seal Cap Material	Valve Wt	Kit Wt
B 33813	--	1-3/8	31/32	4-13/32	9-29/32	2-1/8	2-3/4	2-1/2	17/32	1/4	2-1/8	Cast Iron	9.43	--
A 15246	--	1-5/8	1-3/32	3-61/64	9-15/32	2-1/8	2-3/4	2-1/2	17/32	1/4	2-1/8	Valox	9.37	--
A 16321	A 17513	1-5/8	1-3/32	4-19/32	10-3/64	2-1/8	2-3/4	2-1/2	17/32	1/4	2-1/8	Valox	8.72	8.92
A 16367	A 17524	1-5/8	1-3/32	5-1/4	11-29/32	2-17/32	3-7/32	3-1/16	11/16	1/4	3-1/16	Valox	18.20	18.61
A 16496	--	1-5/8	1-3/32	3-61/64	9-15/32	2-1/8	2-3/4	2-1/2	17/32	1/4	2-1/8	Valox	8.74	--
B 32337	--	1-5/8	1-3/32	3-61/64	9-15/32	2-1/8	2-3/4	2-1/2	17/32	1/4	2-1/8	Valox	9.07	--
B 33770	--	1-5/8	1-3/32	4-19/32	10-1/64	2-1/8	2-3/4	2-1/2	17/32	1/4	2-1/8	Cast Iron	8.46	--
B 33842	--	1-5/8	1-3/32	5-1/4	11-29/32	2-17/32	3-7/32	3-1/16	11/16	1/4	3-1/16	Cast Iron	18.97	--
B 33784	--	2	1-9/32	5-1/64	11-55/64	2-17/32	3-7/32	3-1/16	11/16	1/4	3-1/16	Valox	16.42	--
A 15586	A 17535	2-1/8	1-5/16	5-1/16	11-61/64	2-17/32	3-7/32	3-1/16	11/16	1/4	3-1/16	Valox	18.28	6.69
A 16324	A 17523	2-1/8	1-5/16	5-1/16	11-61/64	2-17/32	3-7/32	3-1/16	11/16	1/4	3-1/16	Valox	18.28	18.69
A 16493	--	2-1/8	1-5/16	5-1/16	11-61/64	2-17/32	3-7/32	3-1/16	11/16	1/4	3-1/16	Valox	17.71	--
B 33572	--	2-1/8	1-5/16	5-1/16	11-61/64	2-17/32	3-7/32	3-1/16	11/16	1/4	3-1/16	Valox	17.49	--
B 34429	--	2-1/8	1-5/16	5-1/16	11-61/64	2-17/32	3-7/32	3-1/16	11/16	1/4	3-1/16	Valox	17.28	--
B 34671	--	2-1/8	1-5/16	5-1/16	11-61/64	2-33/64	3-7/32	3-1/16	11/16	1/4	3-1/16	Valox	17.28	--
A 15587	--	2-5/8	1-9/32	5-1/64	12-1/16	2-17/32	3-7/32	3-1/16	11/16	1/4	3-1/16	Valox	20.30	--
A 16366	A 17522	2-5/8	1-15/32	6-1/2	15-1/8	3-11/32	4-5/32	3-7/8	11/16	1/4	3-7/8	Cast Iron	33.18	3.73
B 33568	--	2-5/8	1-9/32	5-1/64	11-29/32	2-17/32	3-7/32	3-1/16	11/16	1/4	3-1/16	Valox	20.23	--
B 34314	--	2-5/8	1-15/32	6-1/2	15-1/8	3-11/32	4-5/32	3-7/8	11/16	1/4	3-7/8	Cast Iron	30.80	--
B 34582	--	2-5/8	1-17/64	5-3/64	11-29/32	2-17/32	3-7/32	3-1/16	11/16	1/4	3-1/16	Valox	--	--
B 34661	--	2-5/8	1-15/32	6-1/2	15-1/8	3-11/32	4-5/32	3-7/8	11/16	1/4	3-7/8	Cast Iron	30.80	--
A 15588	--	3-1/8	1-7/32	5-15/16	14-39/64	3-11/32	4-5/32	3-7/8	11/16	1/4	3-7/8	Cast Iron	33.22	--
A 16365	A 17521	3-1/8	1-7/32	5-15/16	14-39/64	3-11/32	4-5/32	3-7/8	11/16	1/4	3-7/8	Cast Iron	33.22	33.77
B 33569	--	3-1/8	1-7/32	5-15/16	14-39/64	3-11/32	4-5/32	3-7/8	11/16	1/4	3-7/8	Cast Iron	32.38	--
A 17496	--	3-5/8	2-1/16	7	16-19/64	3-7/8	4-35/64	4-1/4	11/16	1/4	4-1/4	Cast Iron	34.01	--
B 33788	--	3-5/8	2-1/16	7	16-19/64	3-7/8	4-35/64	4-1/4	11/16	1/4	4-1/4	Cast Iron	34.01	--
B 34315	--	3-5/8	2-1/16	7	16-19/64	3-7/8	4-35/64	4-1/4	11/16	1/4	4-1/4	Cast Iron	40.51	--
B 34670	--	3-5/8	2-1/16	7	16-19/64	3-7/8	4-9/64	4-1/4	11/16	1/4	4-1/4	Cast Iron	40.51	--
A 15589	--	4-1/8	1-31/32	7-7/32	17-1/2	4-3/8	5-1/8	4-3/16	13/16	1/4	4-13/16	Cast Iron	49.80	--

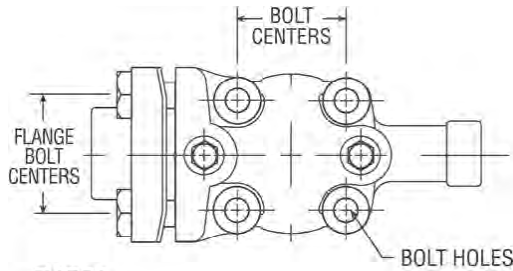
# Compressors, Chillers & Condensers

## COMPRESSOR VALVES & KITS

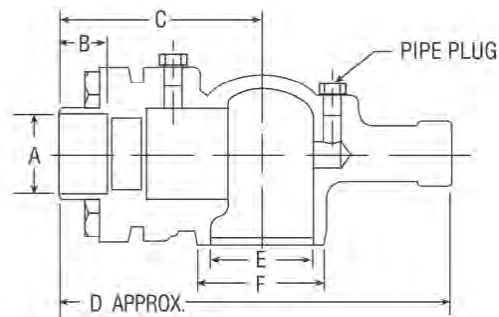
### MUELLER COMPRESSOR VALVES & KITS

#### CAST IRON COMPRESSOR VALVES

##### 4-Bolt - Cast Iron Compressor Valves Without Flange



**P4759**



PART NO	C	D	E	F	BOLT CENTERS	DIA BOLT HOLES	PIPE PLUG SIZE	Flange Bolt Centers	Seal Cap Material	Valve Wt
B 33793	3-9/32	10-11/64	2-17/32	3-7/32	3-1/16	11/16	1/4	3-1/16	Valox	12.58
B 33794	3-25/32	12-7/16	3-11/32	4-5/32	3-7/8	11/16	1/4	3-7/8	Cast Iron	22.05
B 34183	2-11/16	8-3/32	2-1/8	2-3/4	2-1/2	17/32	1/4	2-1/8	Valox	6.91
B 34497	3-63/64	13-1/4	3-7/8	4-35/64	4-1/4	11/16	1/4	4-1/4	Cast Iron	34.00
B 34498	3-9/32	10-1/8	2-17/32	3-7/32	3-1/16	11/16	1/4	3-1/16	Valox	17.28
B 34715	3-25/32	13	3-11/32	4-5/32	3-7/8	11/16	1/4	3-7/8	Steel	22.05
B 34761	3-9/32	10-11/64	2-17/32	3-1/32	3-1/16	11/16	1/4	3-1/16	Valox	13.00
B 34929**	4-9/16	14-53/64	4-3/8	5-1/8	4-13/16	13/16	1/4	4-13/16	Cast Iron	37.00
B 35049	3-9/32	10-1/8	2-17/32	3-7/32	3-1/16	11/16	1/4	3-1/16	Valox	12.97

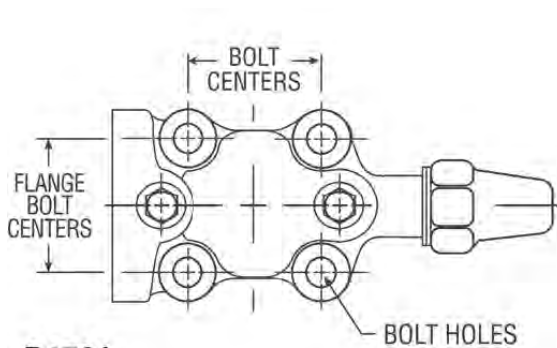
\*\* Does not include coupling and bolts

##### 4-Bolt - Cast Iron Flanges

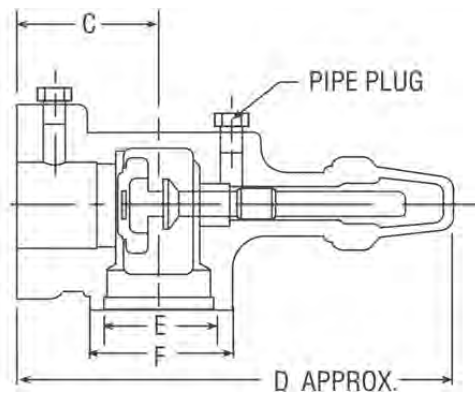
PART NO	A	B	C	D	E	F	BOLT CENTERS	DIA BOLT HOLES	PIPE PLUG SIZE	Flange Bolt Centers	Valve Wt
B 34987*	2-5/8	1-15/32	6-1/2	12-35/64	3-11/32	4-5/32	3-7/8	11/16	1/4	3-7/8	28.50
B 34988*	3-5/8	2-1/16	7	13-39/64	3-7/8	4-9/16	4-1/4	11/16	1/4	4-1/4	33.50

\* Does not include Seat and Stem

##### Ammonia Valves



**P4761**



PART NO	C	D	E	F	BOLT CENTERS	DIA BOLT HOLES	Flange Bolt Centers	Seal Cap Material	Valve Wt
B 35308	3-9/32	10-11/64	2-17/32	3-7/32	3-1/16	11/16	3-1/16	Valox	13.02
B 35358	3-25/32	12-7/16	3-11/32	4-5/32	3-7/8	11/16	3-1/16	Cast Iron	22.05

# Compressors, Chillers & Condensers

## COMPRESSOR VALVES & KITS

### MUELLER COMPRESSOR VALVES & KITS

#### Ammonia Valves

Torques To Seal (ft. - lbs.)

PART NO	Front Seat	Back Seat	Pack Gland	Pipe Plug	Plastic Cap	Brass Cap	Steel Cap	Cast Iron
A 13166								
A 15085	22 - 40	25 - 45	15 - 25	2 - 3 Threads Exposed	Hand Tight	40 - 50	NA	NA
A 15246	45 - 65	45 - 65	25 - 35	2 - 3 Threads Exposed	Hand Tight	NA	NA	NA
A 15500	22 - 40	25 - 45	15 - 25	2 - 3 Threads Exposed	Hand Tight	NA	NA	NA
A 15586	45 - 65	45 - 65	35 - 45	2 - 3 Threads Exposed	Hand Tight	NA	NA	Hand Tight
A 15587	45 - 65	45 - 65	35 - 45	2 - 3 Threads Exposed	Hand Tight	NA	NA	Hand Tight
A 15588	45 - 70	45 - 65	55 - 70	2 - 3 Threads Exposed	Hand Tight	NA	NA	Hand Tight
A 15589	Max 70							
A 16302	14 - 18	14 - 18	8 - 12	2 - 3 Threads Exposed	NA	20 - 30	3 - 5	NA
A 16303	14 - 18	14 - 18	8 - 12	2 - 3 Threads Exposed	NA	20 - 30	3 - 5	NA
A 16304	14 - 18	14 - 18	8 - 12	2 - 3 Threads Exposed	NA	20 - 30	3 - 5	NA
A 16307	14 - 18	14 - 18	8 - 12	2 - 3 Threads Exposed	NA	20 - 30	3 - 5	NA
A 16308	14 - 18	14 - 18	8 - 12	2 - 3 Threads Exposed	NA	20 - 30	3 - 5	NA
A 16309	14 - 18	14 - 18	8 - 12	2 - 3 Threads Exposed	NA	20 - 30	3 - 5	NA
A 16310	22 - 40	25 - 45	15 - 25	2 - 3 Threads Exposed	Hand Tight	NA	NA	NA
A 16311	22 - 40	25 - 45	15 - 25	2 - 3 Threads Exposed	Hand Tight	NA	NA	NA
A 16312	22 - 40	25 - 45	15 - 25	2 - 3 Threads Exposed	Hand Tight	NA	NA	NA
A 16313	30 - 40	22 - 45	15 - 25	2 - 3 Threads Exposed	Hand Tight	40 - 50	NA	NA
A 16314	30 - 40	22 - 45	15 - 25	2 - 3 Threads Exposed	Hand Tight	40 - 50	NA	NA
A 16315	30 - 40	22 - 45	15 - 25	2 - 3 Threads Exposed	Hand Tight	40 - 50	NA	NA
A 16316	30 - 40	22 - 45	15 - 25	2 - 3 Threads Exposed	Hand Tight	40 - 50	NA	NA
A 16317	22 - 40	25 - 45	15 - 25	2 - 3 Threads Exposed	Hand Tight	NA	NA	NA
A 16321	45 - 65	45 - 65	25 - 35	2 - 3 Threads Exposed	Hand Tight	NA	NA	Hand Tight
A 16324	45 - 65	45 - 65	35 - 45	2 - 3 Threads Exposed	Hand Tight	NA	NA	Hand Tight
A 16365	45 - 70	45 - 65	55 - 70	2 - 3 Threads Exposed	Hand Tight	NA	NA	Hand Tight
A 16366	45 - 70	45 - 65	55 - 70	2 - 3 Threads Exposed	Hand Tight	NA	NA	Hand Tight
A 16367	45 - 65	45 - 65	35 - 45	2 - 3 Threads Exposed	Hand Tight	NA	NA	Hand Tight
A 16493	45 - 65	45 - 65	35 - 45	2 - 3 Threads Exposed	Hand Tight	NA	NA	Hand Tight
A 16496	45 - 65	45 - 65	25 - 35	2 - 3 Threads Exposed	Hand Tight	NA	NA	Hand Tight
A 17496	Max 70							
B 32197	22 - 40	25 - 45	15 - 25	2 - 3 Threads Exposed	Hand Tight	40 - 50	NA	NA
B 32337	45 - 65	45 - 65	25 - 35	2 - 3 Threads Exposed	Hand Tight	NA	NA	Hand Tight
B 32807	22 - 40	25 - 45	10 - 15	2 - 3 Threads Exposed	Hand Tight	NA	NA	Hand Tight
B 32808	22 - 40	25 - 45	10 - 15	2 - 3 Threads Exposed	Hand Tight	NA	NA	Hand Tight
B 32930	22 - 40	25 - 45	10 - 15	2 - 3 Threads Exposed	Hand Tight	NA	NA	Hand Tight
B 33367	22 - 40	25 - 45	15 - 25	2 - 3 Threads Exposed	Hand Tight	NA	NA	NA
B 33568	45 - 65	45 - 65	35 - 45	2 - 3 Threads Exposed	Hand Tight	NA	NA	Hand Tight
B 33569	45 - 70	45 - 65	55 - 70	2 - 3 Threads Exposed	Hand Tight	NA	NA	Hand Tight
B 33572	45 - 65	45 - 65	35 - 45	2 - 3 Threads Exposed	Hand Tight	NA	NA	Hand Tight
B 33770	45 - 65	45 - 65	25 - 35	2 - 3 Threads Exposed	Hand Tight	NA	NA	Hand Tight
B 33771	45 - 65	45 - 65	35 - 45	2 - 3 Threads Exposed	Hand Tight	NA	NA	Hand Tight
B 33784	45 - 65	45 - 65		2 - 3 Threads Exposed	Hand Tight	NA	NA	Hand Tight
B 33788	50 - 70	50 - 65		2 - 3 Threads Exposed	NA	NA	Hand Tight	Hand Tight
B 33793	45 - 65	45 - 65		2 - 3 Threads Exposed	Hand Tight	NA	NA	Hand Tight
B 33794	Max 70	Max 65		2 - 3 Threads Exposed	NA	NA	Hand Tight	Hand Tight
B 33813	45 - 65	45 - 65		2 - 3 Threads Exposed	Hand Tight	NA	NA	Hand Tight
B 33842	45 - 65	45 - 65	35 - 45	2 - 3 Threads Exposed	Hand Tight	NA	NA	Hand Tight
B 34183	45 - 65	45 - 65	25 - 35	2 - 3 Threads Exposed	Hand Tight	NA	NA	Hand Tight
B 34314	45 - 65	45 - 65		2 - 3 Threads Exposed	NA	NA	Hand Tight	Hand Tight
B 34315	45 - 65	45 - 65		2 - 3 Threads Exposed	NA	NA	Hand Tight	Hand Tight
B 34429	45 - 65	45 - 65		2 - 3 Threads Exposed	Hand Tight	NA	NA	Hand Tight
B 34497	50 - 70	50 - 65		2 - 3 Threads Exposed	NA	NA	Hand Tight	Hand Tight
B 34498	45 - 65	45 - 65		2 - 3 Threads Exposed	Hand Tight	NA	NA	Hand Tight
B 34582	45 - 65	45 - 65		2 - 3 Threads Exposed	Hand Tight	NA	NA	Hand Tight
B 34661	45 - 65	45 - 65		2 - 3 Threads Exposed	NA	NA	Hand Tight	Hand Tight
B 34670	485 - 65	45 - 65		2 - 3 Threads Exposed	NA	NA	Hand Tight	Hand Tight
B 34671	45 - 65	45 - 65		2 - 3 Threads Exposed	Hand Tight	NA	NA	Hand Tight
B 34715	Max 70	Max 65		2 - 3 Threads Exposed	NA	NA	Hand Tight	Hand Tight
B 34929	50 - 70	50 - 65		2 - 3 Threads Exposed	NA	NA	NA	Hand Tight
B 34987					NA	NA	NA	NA
B 34988					NA	NA	NA	NA
B 35049	45 - 65	45 - 65		2 - 3 Threads Exposed	Hand Tight	NA	NA	NA
B 35308	45 - 65	45 - 65		2 - 3 Threads Exposed	Hand Tight	NA	NA	NA
B 35358	45 - 65	45 - 65		2 - 3 Threads Exposed	Hand Tight	NA	NA	NA