

Compressors, Chillers & Condensers

Compressors,
Chillers, Condensers

Motors

Electrical

Heating
Components

Indoor Air
Quality

Thermostats

Oils &
Chemicals

Accessories, Supplies
& Commodities

Tools &
Instruments

Refrigeration

TECUMSEH PART NUMBER GUIDE

TECUMSEH NOMENCLATURE:

AE	A	4	4	40	Y	XA
Compressor Family	Release Variant (Generation)	Application	Number of Digits In Rated BTU Capacity	First Two Digits of Rated BTU Capacity	Refrigerant	Voltage

In this example (4) total digits, with the first two (40), or 4,000 BTU capacity

AE
AG
AH
AJ
AK
AN
AV
AW
AZ
RG
RK
SA
SF
TP

A = 1st
B = 2nd
C = 3rd
Etc.

Primary Application Parameters		
Evap. Temperature	Rating Pt.	Motor Starting Torque
1. Low	-10°F	Normal
2. Low	-10°F	High
3. High	+45°F	Normal
4. High	+45°F	High
5. Air Cond. *	+45°F	Normal
6. Medium	+20°F	Normal
7. Medium	+20°F	High
8. Air Cond.	+49°F	Normal
9. Commercial	+20°F	High
0. Commercial	+20°F	Normal
A. Medium/Low	+20°F	Normal

*Application "5" compressors when applied to condensing units become application "4" in the unit's model number.

Primary Refrigerants	
A=R12	
B=R410A	
C=R407C	
E=R22	
J=R502	
Y=R134a	
Z=R404A/R507	

Voltage Codes	
XA=115-60-1; 100-50-1	
XB=230-60-1; 200-50-1	
XC=220-240-50-1	
XD=208-230-60-1; 200-50-1	
XF=208-230-60-3; 200-240-50-3	
XG=460-60-3; 380-420-50-3	
XH=575-60-3; 480-520-50-3	
XN=208-230-60-1; 200-220-50-1	
XP=220-60-1; 200-50-1	
XT=200-230-60-3; 200-220-50-3	
XU=100-60-1; 100-50-1	
XV=265-60-1	
AB=115-60-1; 90-50-1	

Note: For explanations of voltages not listed, contact Tecumseh Products Company.

TECUMSEH SERIAL NUMBER INFORMATION

Tecumseh Serial Label Information

The only source for complete compressor information is on the compressor serial label. On earlier compressors, the serial plate is usually spotwelded on the upper housing of the compressor. For current

compressors, the serial label is affixed in the same location. Both describe the characteristics of the compressor.

The months are identified as identified in Table 2-1.

Table 2-1: Serial Label Month Identifiers

January - A	March - C	May - E	July - G	September - J	November - L
February - B	April - D	June - F	August - H	October - K	December - M

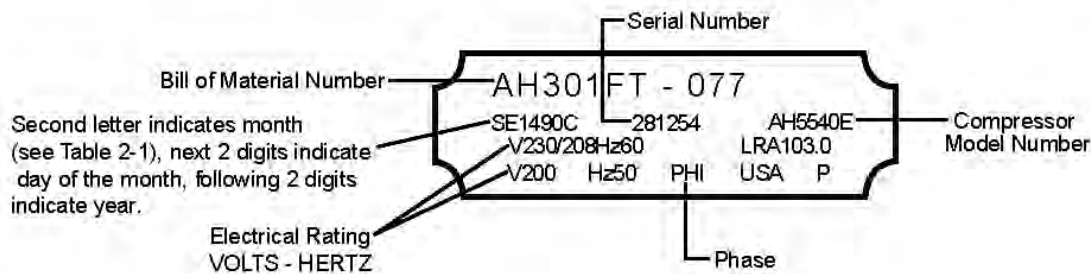


Figure 2-3. Compressor serial label.

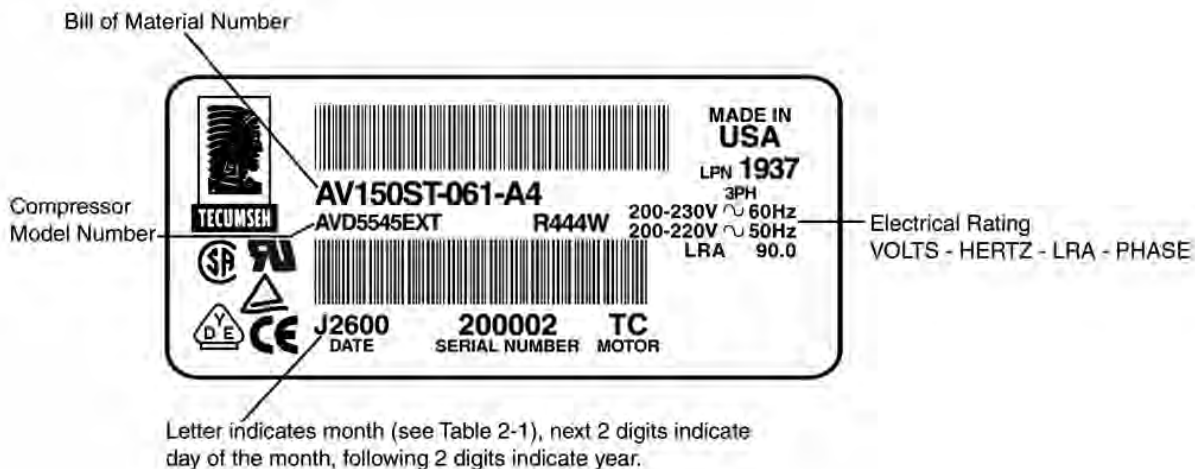


Figure 2-4. Compressor serial plate.

TECUMSEH SERIAL NUMBER INFORMATION

SUBJECT: COMPRESSOR SERIAL LABEL

We have begun a global program to implement a new label on all compressors regardless of the plant of manufacture. This will enable us to be more consistent in labeling product and also help us track compressors for quality and warranty programs.

The new label is quite similar to the old one except for the date code and serial number location and appearance. The new label runs the date code and serial number together and adds a few more digits.

Old label: Date code, serial number and motor information are the last line on the label.

And the information looks like: B2304 149165 TC

New label: The date code and serial number information are contained in a sequence that appears as follows on the label: 51A020411123456A.

Read this sequence as follows:

51	A0204	1	1	123456	A
<i>Plant of Mfg.</i>	<i>Date Code</i>	<i>Line</i>	<i>Shift</i>	<i>Serial No.</i>	<i>Special Marking</i>

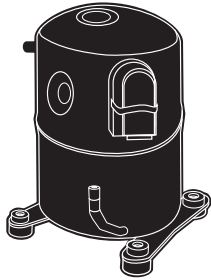
You may also see on the label other approval agency markings such as those used in India, Brazil or other countries along with the usual UL and CSA markings.

The model number, bill of material, voltage and LRA appear on the label as usual.

The implementation of this program began at Tecumseh Brazil in November of 2003, followed by Tecumseh India in December of 2003. Other dates for implementation are: Tecumseh Division: January 20, 2004, Tupelo Division: February 24, 2004, Tecumseh Europe March 1, 2004 except AE, AJ and AK which will be April 2004.

Compressors, Chillers & Condensers

**HERMETIC
RECIP
TECUMSEH
R-22, 60Hz**



- For Room Air Conditioning cooling • Single Phase
- External Line Break Overload • R-22
- Low Noise and Vibration Levels • 60 Cycles
- Adaptable to limited cabinet space
- Lightweight

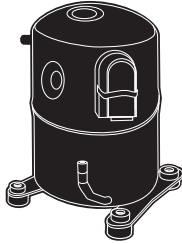
NOTE: Run Capacitors listed are "Single" type. If a "Dual" type capacitor is required check "Capacitors" Section of this catalog.

PART NO	SUPPLIER PART NO	BTUH	VOLTS	PH	RLA	H	DWG	MTG ARR	RUN CAP MFD/VOLTS	RUN CAP PART NO	ST CAP MFD/VOLTS	ST CAP PART NO	ST RELAY PART NO
P031-0502	AEA8458EXA	5800	115	1	5.2	8.5	313C	DB	15/370	P291-1503	21-25/330	P281-2106	HN61KA054
P031-0601	AEA5470EXA	6500	115	1	7.7	8.7	313B	DB	15/370	P291-1503	21-25/330	P281-2106	HN61KA054
P031-0701	AKA5470EXA	7000	115	1	7.1	9	314A	DB	15/370	P291-1503	21-25/330	P281-2106	HN61KA054
P031-0703	AEA8475EXA	7500	115	1	7	8.5	313D	DB	15/370	P291-1503	21-25/330	P281-2106	HN61KA054
P031-0721	AKA8475EXD	7500	208/230	1	2.8	9.5	313A	DB	15/370	P291-1503	21-25/330	P281-2106	HN61KA054
P031-0791	AKA8475EXV	7500	265	1	2.6	9.5	313A	DB	15/370	P291-1503	21-25/330	P281-2106	HN61KA054
P031-0801	AKA5483EXA	8300	115	1	9	9	314A	DB	15/370	P291-1503	21-25/330	P281-2106	HN61KA054
P031-0821	AKA5483EXD	8300	208/230	1	4.4	9	314A	DB	15/370	P291-1503	21-25/330	P281-2106	HN61KA054
P031-0891	AKA5483EXV	8300	265	1	3.9	9.4	314A	DB	15/370	P291-1503	21-25/330	P281-2106	HN61KA054
P031-0902	AKA8494EXA	9400	115	1	7	9.5	313A	DB	35/370	P291-3503	21-25/330	P281-2106	HN61HB497
P031-0922	AKA8494EXD	9400	208/230	1	3.5	9.4	313A	DB	15/370	P291-1503	21-25/330	P281-2106	HN61KA054
P031-0992	AKA8494EXV	9400	265	1	3	9.4	313A	DB	15/370	P291-1503	21-25/330	P281-2106	HN61KA054
P031-1091	AKA5510EXV	10000	265	1	5	9	314A	DB	15/370	P291-1503	21-25/330	P281-2106	HN61KA054
P031-1101	AKA5511EXA	11000	115	1	11	9	314A	DB	15/370	P291-1503	21-25/330	P281-2106	HN61KA054
P031-1104	AKA8511EXA	11400	115	1	8.9	8.8	314A	DB	25/370	P291-2503	21-25/330	P281-2106	HN61KA054
P031-1121	AKA5511EXD	11000	208/230	1	5.9	9	314A	DB	15/370	P291-1503	21-25/330	P281-2106	HN61KA054
P031-1221	AKA8512EXD	12000	208/230	1	4.6	9.4	313A	DB	25/370	P291-2503	21-25/330	P281-2106	HN61KA054
P031-1291	AKA5512EXV	12000	265	1	5.5	9	314A	DB	25/370	P291-2503	21-25/330	P281-2106	HN61HB510
P031-1292	AKA8512EXV	12000	265	1	4.2	9	313A	DB	15/370	P291-1503	21-25/330	P281-2106	HN61KA054
P031-1302	AKA8513EXA	13500	115	1	10.8	9.5	313A	DB	25/370	P291-2503	43-56/320	P281-4306	HN61KA054
P031-1324	AKA8513EXD	13500	208/230	1	5.8	9.5	313A	DB	15/370	P291-1503	43-56/320	P281-4306	HN61KA054
P031-1325	AJB5513EXD	13200	208/230	1	7.5	11	301A	B	17/370	P291-1703	21-25/330	P281-2106	HN61KA054
P031-1326	AJB5513EXD	13200	208/230	1	7.5	11	301A	C2	17/370	P291-1703	21-25/330	P281-2106	HN61KA054
P031-1392	AKA8513EXV	13500	265	1	4.7	9.5	313A	DB	15/370	P291-1503	43-56/320	P281-4306	HN61HB490
P031-1521	AJB5515EXD	15000	208/230	1	8.5	10.8	301A	B	20/370	P291-2003	21-25/330	P281-2106	HN61KA054
P031-1524	AKA8515EXD	15000	208/230	1	6.2	9.4	313A	DB	25/370	P291-2503	21-25/330	P281-2106	HN61KB036
P031-1525	AJB5515EXD	15000	208/230	1	8.5	11	301A	C2	20/370	P291-2003	21-25/330	P281-2106	HN61KA054
P031-1527	AWG5515EXN	15500	208/230	1	7.3	13.1	302B	A	20/370	P291-2003	145-175/330	P281-1456	P283-9914
P031-1591	AJB5515EXV	15000	265	1	7.4	10.8	301A	B	20/440	P291-2004	21-25/330	P281-2106	HN61HB510
P031-1593	AKA8515EXV	15000	265	1	5.4	9.4	313A	DB	15/440	P291-1504	21-25/330	P281-2106	HN61HB510
P031-1693	AWF5516EVA	16700	265	1	5.8	13.1	310A	A	25/440	P291-2504	72-88/330	P281-7206	P283-9930
P031-1721	AJA5517EXD	17000	208/230	1	11	11.1	301A	B	25/370	P291-2503	21-25/330	P281-2106	HN61KA054
P031-1723	AWG5517EXN	17000	208/230	1	7.7	13.1	302A	A	25/370	P291-2503	21-25/330	P281-2106	P283-9924
P031-1724	AWF5517EXN	17000	208/230	1	6.9	13.1	310A	A	35/370	P291-3503	88-108/330	P281-8806	P283-9924
P031-1791	AJA5518EXV	17000	265	1	10.5	11.1	301A	B	25/370	P291-2503	21-25/330	P281-2106	HN61HB510
P031-1794	AWG5517EVA	17000	265	1	6.8	13.1	302B	A	25/370	P291-2503	88-108/330	P281-8806	P283-9918
P031-1894	AWF5518EVA	18000	265	1	6.7	13.1	310A	A	35/440	P291-3504	72-88/330	P281-7206	P283-9924
P031-1921	AJA5519EXD	19000	208/230	1	11.6	11.3	301A	B	25/370	P291-2503	75-90/330	P281-7506	HN61HB496
P031-19210	AWF5519EXN	19000	208/230	1	7.7	13.1	310A	A	35/370	P291-3503	88-108/330	P281-8806	P283-9924
P031-1927	AJA5519EXD	19000	208/230	1	10.2	11	301A	C2	25/370	P291-2503	21-25/330	P281-2106	HN61KA054
P031-1928	AWG5519EXN	19000	208/230	1	8.6	13.1	302B	A	25/370	P291-2503	145-175/330	P281-1456	P283-9913
P031-1929	AWG5519EXN	19000	208/230	1	8.6	13.1	302A	A	25/370	P291-2503	145-175/330	P281-1456	P283-9913
P031-1991	AJA5519EXV	19000	265	1	12	11.4	301A	B	25/440	P291-2504	21-25/330	P281-2106	HN61KB109
P031-1993	AWG5519EVA	19100	265	1	7.5	13.1	302B	A	25/370	P291-2503	88-108/330	P281-8806	--
P031-2191	AWF5522EVA	21800	265	1	7.8	13.1	310A	A	35/370	P291-3503	88-108/330	P281-8806	P283-9924
P031-2224	AWF5522EXN	22000	208/230	1	8.8	13.1	310A	A	35/370	P291-3503	145-175/330	P281-1456	P283-9936

Compressors, Chillers & Condensers

Compressors,
Chillers, Condensers

**HERMETIC
RECIP
TECUMSEH
R-22, 60Hz**



Motors

Electrical

Heating
Components

Indoor Air
Quality

Thermostats

Oils &
Chemicals

Accessories, Supplies
& Commodities

Tools &
Instruments

Refrigeration

PART NO	SUPPLIER PART NO	BTUH	VOLTS	PH	RLA	H	DWG	MTG ARR	RUN CAP MFD/VOLTS	RUN CAP PART NO	ST CAP MFD/VOLTS	ST CAP PART NO	ST RELAY PART NO
P031-2429	AWF5524EXN	24400	208/230	1	10	13.1	310A	A	35/370	P291-3503	145-175/330	P281-1456	P283-9913
P031-2492	AWG5524EVA	24700	265	1	9.2	13.1	302A	A	35/440	P291-3504	88-108/330	P281-8806	--
P031-2493	AWF5524EVA	24700	265	1	8.9	13.1	310A	A	35/440	P291-3504	88-108/330	P281-8806	P283-9919
P031-2824	AWG5528EXN	28400	208/230	1	13.5	13.1	302B	A	35/370	P291-3503	88-108/330	P281-8806	P283-9924
P031-2825	AWF5528EXN	28400	208/230	1	11.2	13.1	310A	A	45/370	P291-4503	145-175/330	P281-1456	P283-9924
P031-2892	AWF5528EVA	28400	265	1	10.5	13.1	310A	A	35/370	P291-3503	88-108/330	P281-8806	-
P031-3025	AWG5530EXN	30200	208/230	1	14.4	13.1	302A	A	45/370	P291-4503	145-175/330	P281-1456	P283-9924
P031-3123	AVA5532EXN	31460	208/230	1	14.5	14.9	306B	A	35/370	P291-3503	88-108/250V	P281-8805	HN61KB023
P031-3124	AWG5532EXN	31500	208/230	1	15.1	13.1	302B	A	45/370	P291-4503	145-175/330	P281-1456	P283-9924
P031-3191	AVA5532EXV	31460	265	1	12.2	14.9	306C	A	35/440	P291-3504	88-108/330V	P281-8806	HN61KB023
P031-3221	AVA5532EXN	31292	208/230	1	14.5	14.9	307A	A	35/370	P291-3503	88-108/250V	P281-8805	HN61HB495
P031-3223	AWF5532EXN	32000	208/230	1	13.4	13.1	310A	A	45/370	P291-4503	145-175/330	P281-1456	P283-9924
P031-3291	AVA5532EXV	32000	265	1	12.2	14.9	307A	A	35/440	P291-3504	88-108/330	P281-8806	P283-9924
P031-3481	AVB5535EXH	34500	575	3	4	14.6	306B	A	NR	NR	NR	NR	NR
P031-3522	AVB5535EXN	35000	208/230	1	14.2	14.6	306C	A	45/370	P291-4503	88/108/330V	P281-8806	P283-9924
P031-3523	AVA5535EXN	34600	208/230	1	15.7	14.9	307A	A	40/370	P291-4003	88-108/250	P281-8805	-
P031-3822	AVA5538EXN	37750	208/230	1	17.2	15.3	306C	A	35/440	P291-3504	77-88/330V	P281-7206	HN61HB495
P031-3823	AVC5538EXN	37551	208/230	1	17.2	14.6	307A	A	35/440	P291-3504	77-88/330V	P281-7206	HN61HB495
P031-4181	AVB5542EXH	41500	575	3	4.4	14.6	306C	A	NR	NR	NR	NR	NR
P031-4221	AVC5542EXN	41560	208/230	1	18.3	14.6	307A	A	40/440	P291-4004	77-88/330V	P281-7206	HN61HB495
P031-4222	AVB5542EXN	42000	208/230	1	17.1	14.6	306C	A	45/440	P291-4504	77-88/330V	P281-7206	HN61KB036
P031-4621	AGA5546EXN	46000	208/230	1	22.7	15.8	305A	A	40/440	P291-4004	77-88/330V	P281-7206	HN61HB495
P031-4622	AVA5546EXN	46000	208/230	1	21.5	14.6	306C	A	40/440	P291-4004	77-88/330V	P281-7206	HN61HB495
P031-4623	AVC5546EXN	46700	208/230	1	20.4	14.6	307A	A	45/440	P291-4504	72-88/330	P281-7206	P283-9934
P031-4921	AVB5549EXN	49000	208/230	1	20.5	14.6	306C	A	45/440	P291-4504	88-108-330V.	P281-8806	HN61HB496
P031-4981	AVB5549EXH	48800	575	3	5.4	14.6	306C	A	N/R	NR	NR	N/R	N/R
P031-5321	AGA5553EXN	53000	208/230	1	26.2	16.1	305A	A	45/440	P291-4504	77-88/330V	P281-7206	HN61HB495
P031-5381	AGA5553EXH	51100	575	3	6	16.1	305A	A	N/R	NR	NR	N/R	N/R
P031-5721	AVB5558EXN	57500	208/230	1	24.8	14.6	306B	A	45/440	P291-4504	135-155/320	P281-1356	P283-9913
P031-5781	AVB5558EXH	57000	575	3	6.3	14.6	306B	A	N/R	NR	NR	N/R	N/R
P031-6121	AGA5561EXN	60000	208/230	1	30.5	16.4	305A	A	55/440	P291-5504	77-88/330V	P281-7206	HN61HB495
P031-6181	AGA5561EXH	58200	575	3	7	15.9	305A	A	N/R	NR	NR	N/R	N/R
P031-6821	AGA5568EXN	66850	208/230	1	34.5	16.9	305A	A	55/440	P291-5504	77-88/330V	P281-7206	HN61HB495
P031-6881	AGA5568EXH	64900	575	3	8.2	16.3	305A	A	N/A	NR	NR	N/A	N/A
P051-2432	AWG5530EVA	24800	220/240	1	12	13.1	302B	A	45/440	P291-4504	88-108/330	P281-8806	-
P051-2632	AWF5532EVA	26500	220/240	1	12.2	13.1	310A	A	45/440	P291-4504	88-108/330	P281-8806	N/A

Compressors, Chillers & Condensers

**HERMETIC
RECIP
TECUMSEH**

R-22, 50/60 HZ

PART NO	SUPPLIER PART NO	BTUH	APPL	VOLTS	RLA	H	DWG	MTG ARR	RUN CAP MFD/VOLTS	ST CAP MFD/VOLTS
P031-2151	AWF5522EXT	21300	AC/HP	200/230	5.6	13.1	310A	A	N/R	NR
P031-2171	AWF5522EXG	21300	AC/HP	460	2.9	13.1	310A	A	N/R	NR
P031-2453	AWF5524EXT	24700	AC/HP	208/230	6.4	13.1	310A	A	N/R	NR
P031-2472	AWF5524EXG	24400	AC/HP	460	3.2	13.1	310A	A	N/R	NR
P031-2854	AWF5528EXT	28000	AC/HP	200/230	7.6	13.1	310A	A	N/R	NR
P031-2872	AWF5528EXG	28000	AC/HP	460	3.8	13.1	310A	A	N/R	NR
P031-3152	AVA5532EXT	31460	AC/HP	200/230	8.9	14.6	306B	A	N/R	NR
P031-3153	AWF5532EXT	31500	AC/HP	200/230	8.6	13.1	310A	A	N/R	NR
P031-3174	AWF5532EXG	31500	AC/HP	460	4.3	13.1	310A	A	N/R	NR
P031-3252	AVA5532EXT	31500	AC/HP	200/230	8.9	14.6	307A	A	N/R	NR
P031-3272	AVA5532EXG	31460	AC/HP	460	4.4	14.6	307A	A	N/R	NR
P031-3471	AVB5535EXG	34500	AC/HP	460	4.6	14.6	306C	A	N/R	NR
P031-3551	AVA5535EXT	34600	AC/HP	200/230	9.7	14	306C	A	N/R	NR
P031-3552	AVB5535EXT	34500	AC/HP	200/230	9.2	14.6	306C	A	N/A	NR
P031-3854	AVA5538EXT	37750	AC/HP	208/230	10.8	14.6	307A	A	N/A	NR
P031-3855	AVB5538EXT	37500	HP	208/230	12.9	14.6	306C	A	N/A	NR
P031-3872	AVA5538EXG	38400	AC/HP	460	8	14.6	307A	A	N/A	NR
P031-3873	AVA5538EXG	38400	AC/HP	460	5.3	14.6	306C	A	N/A	NR
P031-4151	AVB5542EXT	41500	AC/HP	200/230	11.3	14.6	306B	A	N/R	NR
P031-4171	AVB5542EXG	41500	AC/HP	460	5.65	14.6	306C	A	N/R	NR
P031-4251	AVA5542EXT	42500	AC/HP	200/230	12	14.6	307A	A	N/A	NR
P031-4271	AVA5542EXG	41560	AC/HP	460	5.9	14.6	307A	A	N/R	NR
P031-4651	AGA5546EXT	46000	AC/HP	200/230	13.5	15.8	305A	A	N/R	NR
P031-4652	AVA5546EXT	46000	AC/HP	208/230	13.3	14.6	307A	A	N/R	NR
P031-4672	AVA5546EXG	46000	AC/HP	460	10.9	14.6	307A	A	N/R	NR
P031-4873	AVB5549EXG	48000	AC/HP	460	6.7	14.6	306C	A	N/R	NR
P031-4951	AVB5549EXT	48500	AC/HP	208/230	13.5	14.6	306C	A	N/R	NR
P031-5351	AGA5553EXT	53000	AC/HP	208/230	15.5	16.1	305A	A	N/R	NR
P031-5371	AGA5553EXG	53000	AC/HP	460	7.8	16.1	305A	A	N/R	NR
P031-5751	AVB5558EXT	57000	AC/HP	200/230	15.7	14.6	306B	A	N/R	NR
P031-5771	AVB5558EXG	57000	AC/HP	460	7.8	14.6	306B	A	N/R	NR
P031-6151	AGA5561EXT	60000	AC/HP	200/230	18	15.9	305A	A	N/R	NR
P031-6171	AGA5561EXG	60000	AC/HP	460	9.5	15.9	305A	A	N/R	NR
P031-6851	AGA5568EXT	66850	AC/HP	208/230	20.2	16.7	305A	A	N/A	NR
P031-6871	AGC5568EXG	66850	AC/HP	460	10.6	16.4	305A	A	N/A	NR
P031-7171	AGA5573EXG	71280	AC/HP	460	11.8	16.3	305A	A	N/A	NR
P051-5051	AG5561E	50700	A/C	200	20.5	15.6	305A	A	N/R	NR
P051-5071	AG5561E	50800	AC	380/420	9.5	15.6	305A	A	N/R	NR

R-22, 50 HZ

PART NO	SUPPLIER PART NO	BTUH	RLA	H	DWG	MTG ARR	RUN CAP MFD/VOLTS	RUN CAP PART NO	ST CAP MFD/VOLTS	ST CAP PART NO	ST RELAY PART NO
P051-0531	AEA5465EXC	5400	3.3	9	313B	DB	15/370	P291-1503	21-25/330	P281-2106	HN61KB023
P051-0731	AKA5483EXC	6900	4	9.2	314A	DB	15/370	P291-1503	21-25/330	P281-2106	HN61HB496
P051-0831	AKA5510EXC	8300	5.2	9.2	314A	DB	20/370	P291-2003	21-25/330	P281-2106	HN61KB054
P051-1031	AKA5512EXC	10000	6	9.2	314A	DB	20/370	P291-2003	21-25/330	P281-2106	HN61KA054
P051-1132	AK144JT-009-S7Y	11300	4.8	8.8	313A	DB	15/370	P291-1503	21-25/330	P281-2106	HN61KA054
P051-1231	AJB5515EXC	12500	8	10.9	301A	B	20/370	P291-2003	21-25/330	P281-2106	HN61KA054
P051-1233	AJB5515EXC	12500	8	10.9	304D	C2	45/370	P291-4503	21-25/330	P281-2106	HN61KA054
P051-1432	AJA5517EXC	14000	10.2	11.4	301A	B	25/370	P291-2503	21-25/330	P281-2106	HN61KA054
P051-1433	AJA5517EXC	13800	11	11.3	304D	C2	25/370	P291-2503	21-25/330	P281-2106	HN61KA054
P051-1531	AJA5518EXC	15400	11.3	11.3	304D	C2	30/370	P291-3003	21-25/330	P281-2106	HN61HB490
P051-1532	AJA5518EXC	15400	11.3	11.4	301A	B	25/370	P291-2503	21-25/330	P281-2106	HN61KB023
P051-1534	AWG5519EVA	15700	7.7	13.1	302B	A	25/370	P291-2503	88-108/330	P281-8806	P283-9918
P051-1837	AWG5522EVA	18300	8.7	13.1	302A	A	25/370	P291-2503	88-108/330	P281-8806	P283-9918
P051-1838	AWG5522EVA	18300	8.7	13.1	302A	K	25/370	P291-2503	88-108/330	P281-8806	P283-9918
P051-1839	AW5522EVA	18300	8.7	13.1	302B	A	25/370	P291-2503	88-108/330	P281-8806	P283-9918
P051-2033	AWA5524EXC	20650	9.7	13.1	302B	A	35/370	P291-3503	88-108/330	P281-8806	HN61HB496
P051-2331	AWA5528EXC	23300	11.3	13.2	302A	A	35/370	P291-3503	88-108/330	P281-8806	HN61HB496
P051-2731	AWB5532EXC	27000	12.9	13.1	310A	A	45/370	P291-4503	88-108/330	P281-8806	HN61HB496
P051-3831	AVA5546EXC	38750	18.4	14.4	307A	A	40/440	P291-4004	135-155/320	P281-1356	HN61HB496

Compressors, Chillers & Condensers

Compressors,
Chillers, Condensers

ROTARY HERMETIC TECUMSEH

R-22, 60 HZ



- Rotary design means Low Noise & Vibration levels
- Air Conditioning & Heat Pump Applications
- High Efficiency
- Compact Design
- R-22
- AC/HP Duty
- Single Phase
- 60 Cycles

PART NO	SUPPLIER PART NO	BTUH	VOLTS	RLA	H	DWG	MTG ARR	RUN CAP MFD/VOLTS	RUN CAP PART NO	ST CAP MFD/VOLTS	ST CAP PART NO	ST RELAY PART NO
P031-0504	RGB5450EXA	5050	115	4.1	10.7	317A	P	35/370	P291-3503	NR	NR	NR
P031-0505	RGA5450EXA	5000	115	4.4	10.3	317A	P	35/370	P291-3503	NR	NR	NR
P031-0603	RGA5460EXA	6000	115	5	10.9	312A	P	35/370	P291-3503	NR	NR	NR
P031-0604	RGB5460EXA	6000	115	4.8	10.7	317A	P	35/370	P291-3503	NR	NR	NR
P031-0622	HGA5467EXD	6750	208/230	2.8	5.8	312B	BB	15/370	P291-1503	NR	NR	NR
P031-0692	HGA5467EXV	6750	265	2.5	5.8	312B	BB	15/370	P291-1503	NR	NR	NR
P031-0704	RGA5472EXA	7200	115	6.2	11.3	312A	P	35/370	P291-3503	NR	NR	NR
P031-0705	RGB5472EXA	7200	115	6.4	10.9	317A	P	35/370	P291-3503	NR	NR	NR
P031-0722	RGA5472EXD	7250	208/230	3	11.3	312A	P	15/370	P291-1503	NR	NR	NR
P031-0792	RGA5472EXV	7250	265	2.7	11.3	312A	P	15/370	P291-1503	NR	NR	NR
P031-0802	RKA5480EXA	8100	115	6.6	10.6	312A	S	25/370	P291-2503	NR	NR	NR
P031-0803	RGA5480EXA	8000	115	7	11.4	317A	P	35/370	P291-3503	NR	NR	NR
P031-0823	HGA5480EXD	8150	208/230	3.5	5.8	312B	BB	15/370	P291-1503	NR	NR	NR
P031-0893	HGA5480EXV	8100	265	2.9	10.3	312B	BB	10/440	P291-1004	NR	NR	NR
P031-0901	RKA5490EXA	9200	115	7.4	10.6	312A	S	25/370	P291-2503	NR	NR	NR
P031-0921	RKA5490EXD	9100	208/230	3.8	11.2	312A	S	25/370	P291-2503	NR	NR	NR
P031-0991	RKA5490EXV	9100	265	3.3	11.2	312A	S	25/370	P291-2503	NR	NR	NR
P031-1004	RKA5510EXA	10300	115	8.6	10.5	312A	S	25/370	P291-2503	NR	NR	NR
P031-1005	RGA5510EXA	10200	115	8.9	11.3	312A	P	35/370	P291-3503	NR	NR	NR
P031-1103	RKA5512EXA	11700	115	9.4	11.6	312A	S	25/370	P291-2503	NR	NR	NR
P031-1105	RGA5512EXA	11500	115	10	11.2	312A	P	35/370	P291-3503	NR	NR	NR
P031-1122	RKA5512EXD	11700	208/230	4.4	11.3	312A	S	25/370	P291-2503	NR	NR	NR
P031-1124	HGA5512EXD	11500	208/230	5.5	5.8	312B	BB	20/440	P291-2004	NR	NR	NR
P031-1125	RGB5512EXD	11600	208/230	4.8	11.4	312A	P	25/370	P291-2503	NR	NR	NR
P031-1191	RKA5512EXV	11700	265	4.5	11.7	312A	S	25/440	P291-2504	NR	NR	NR
P031-1193	HGA5512EXV	11500	265	4.3	5.8	312B	BB	15/440	P291-1504	NR	NR	NR
P031-1301	RKA5513EXA	13200	115	11.4	11.4	312A	S	25/370	P291-2503	AS89ZL751	P421-4006	N/A
P031-1323	RKA5513EXD	13200	208/230	5.4	11.7	312A	S	25/370	P291-2503	NR	NR	NR
P031-1391	RKA5513EXV	13200	265	4.8	11.5	312A	S	25/440	P291-2504	NR	NR	NR
P031-1523	RKA5515EXD	15500	208/230	6.4	11.9	312A	S	25/370	P291-2503	NR	NR	NR
P031-1594	RKA5515EXV	15500	265	5.4	12.3	312A	S	25/440	P291-2504	NR	NR	NR
P031-1793	RKA5518EXV	17500	265	6.3	12.3	312A	S	25/440	P291-2504	NR	NR	NR
P031-1825	RKA5518EXD	17700	208/230	7.6	11.8	312A	S	25/370	P291-2503	NR	NR	NR

Motors

Electrical

Heating
Components

Indoor Air
Quality

Thermostats

Oils &
Chemicals

Accessories, Supplies
& Commodities

Tools &
Instruments

Refrigeration