

Compressors, Chillers & Condensers

10RT SERIES DX COOLERS (7-1/2 to 350 Nominal Tons)

Build your system on the best...10RT

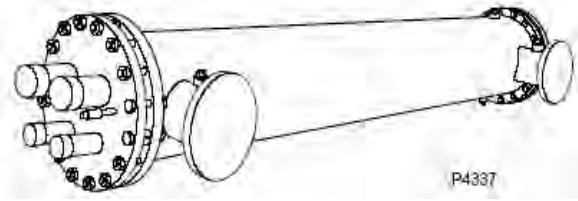
Series DX coolers

Choose Carrier 10RT Series directexpansion(DX) shell-and-tube liquid coolers for built-up systems in office buildings,hospitals, or any commercial applications where unique cooling requirements or space limitations dictate the need for separate location of the cooler from the condenser, compressors, or air-handling components.

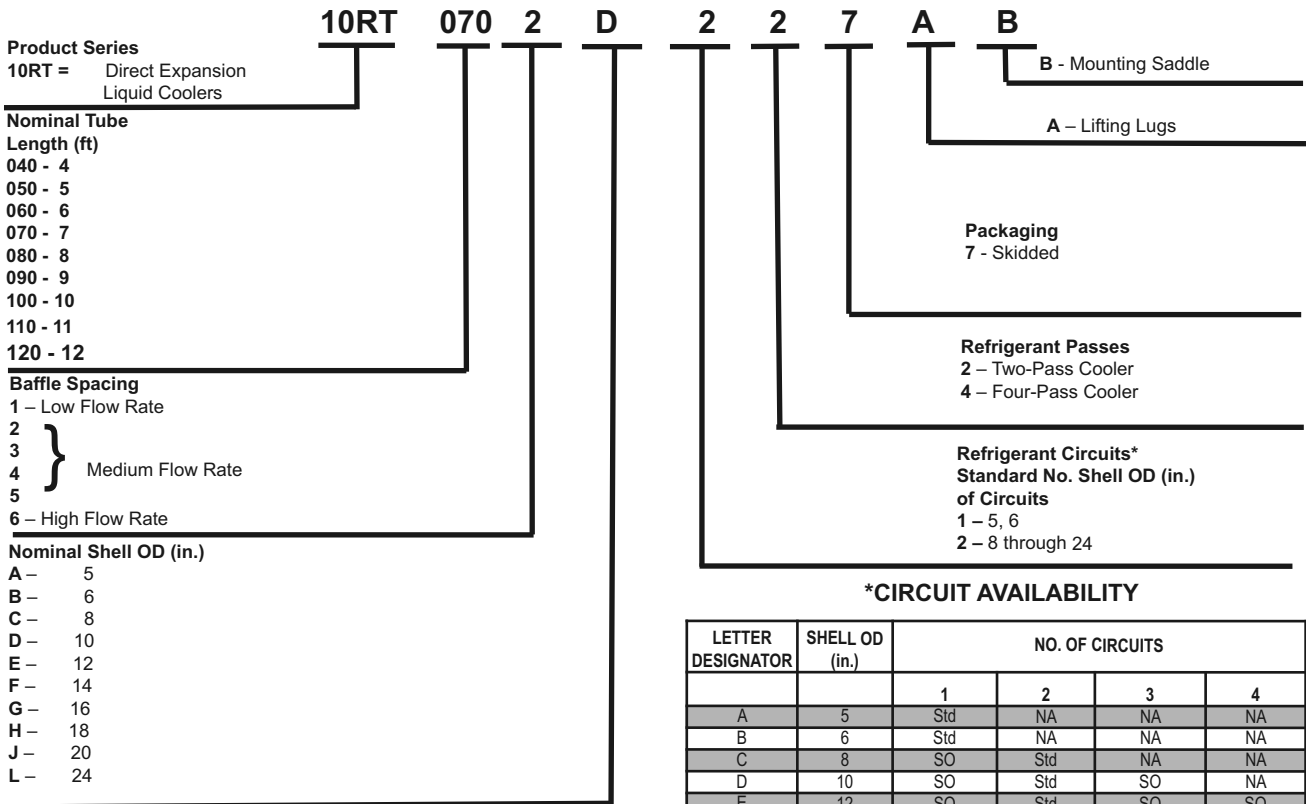
Features/Benefits

- Fifteen models, 7 1/2 through 350 tons normally carried in stock or with short shipping lead times.
- High performance tubes providing more economical cooling.
- Serviceable through-tube design and removable heads.
- Controlled refrigerant velocities for positive oil return and low refrigerant pressure drop.

With 10RT Series coolers, dimensional restrictions are no problem, since you select from a large assortment of shell diameters and lengths. And these compact coolers are available in 7 1/2 through 350 nominal tons capacity range. (Based on 44 F leaving water temperature; R-22 at 35 F evaporator temperature; 0.0001 fouling factor.) The 10RT is designed for optimum heat transfer rates and features rolled-in tubes and removable heads. Shell-side baffling is selected for high operating efficiency and minimal fluid pressure drops.



Model Number Nomenclature



LEGEND
NA - Not Available
SO - Special Order
Std - Standard

Compressors,
Chillers, Condensers

Motors

Electrical

Heating
Components

Indoor Air
Quality

Thermostats

Oils &
Chemicals

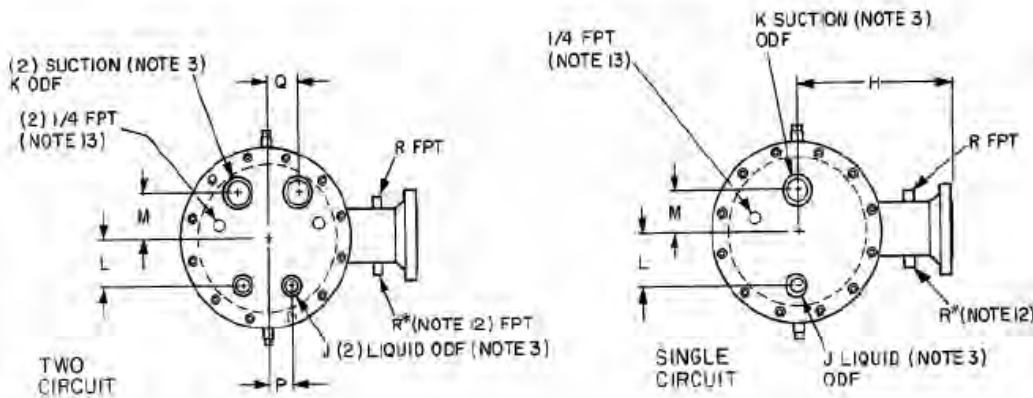
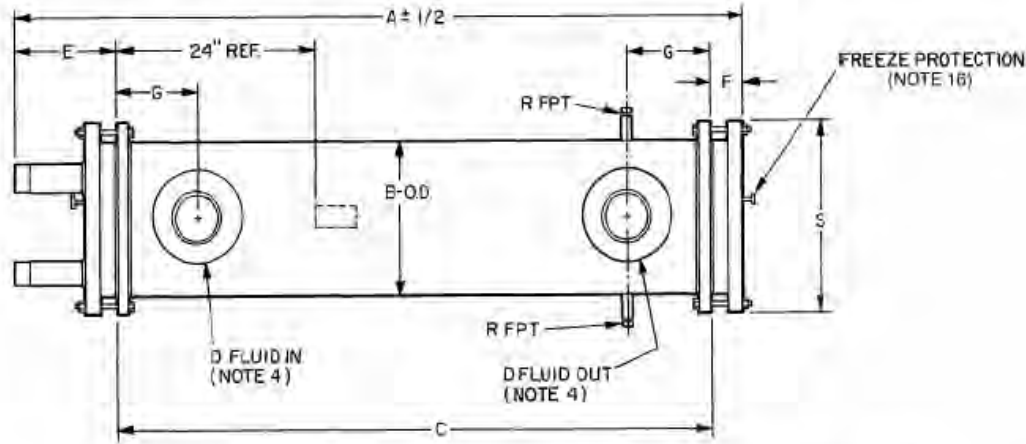
Accessories, Supplies
& Commodities

Tools &
Instruments

Refrigeration

Compressors, Chillers & Condensers

10RT SERIES DX COOLERS (7-1/2 to 350 Nominal Tons)



NOTES:

1. Constructed and tested in accordance with ASME code Section VIII for unfired pressure vessels.
2. Maximum working pressures: 200 psi at 100 F tube side; 150 psi at 120 F shell side.
3. Connections J and K are steel welded to head and bored to ODS of copper tubing.
4. Fluid connections are MPT through 3 inches. Connections larger than 3 in. terminate in 150 lb flanges.
5. Shell baffles: hot-rolled steel, terne plate.
6. Heads: ASME specification SA-285, grade C, or cast steel heads, ASME specification SA-216, grade WCA or WCB.
7. Tube sheets: flange quality carbon steel, ASME specification SA-285 grade C.
8. Shell: Steel pipe shell, ASME specification SA-53, grade A or B.
9. Tubes: 3/4-in. OD seamless copper tubes per ASME specifications with internal and external enhanced surface.
10. One circuit standard with 5-in. and 6-in. pipe shell (optional for all others). Two circuits standard with 8-in. through 24-in. pipe shells.
11. Insulation: 3/4-in. Armaflex standard. Double layer of Armaflex available on special order.
12. Fitting R* used only on 3-in. MPT or smaller fluid connections. Fluid connections larger than 3-in. have both R and R*.
13. External equalizer connection.
14. Add 1 1/2-in. to dimension B; 3/4-in. to dimension F; and 1 1/2-in. to dimension S to take into account the standard 3/4-in. Armaflex insulation.
15. Finish: Grey enamel paint.
16. 1/4-FPT freeze protection connection.
17. Tube wall thickness: 0.028-in. finned; 0.056-in. plain.

Compressors, Chillers & Condensers

10RT SERIES DX COOLERS (7-1/2 to 350 Nominal Tons)

Dimensions — 2-Pass (in.)

UNIT 10RT	A	B	C	D	E	F	G	H	J (ODF)	K (ODF)	L	M	P	Q	R	S
0401-A-127	55-3/4	5-9/16	47-5/8	2	6-13/16	1-5/16	3-3/16	8-5/8	7/8	1-3/8	1-1/4	1-3/8	—	—	3/4	8-1/2
0501-A-127	67-3/4	5-9/16	59-5/8	2	6-13/16	1-5/16	3-3/16	8-5/8	7/8	1-3/8	1-1/4	1-3/8	—	—	3/4	8-1/2
0501-B-127	67-3/4	6-5/8	59-5/8	2-1/2	6-13/16	1-5/16	3-7/16	9-3/16	1-1/8	2-1/8	1-9/16	1-9/16	—	—	3/4	9-3/4
0601-B-127	79-3/4	6-5/8	71-5/8	2-1/2	6-13/16	1-5/16	3-7/16	9-3/16	1-1/8	2-1/8	1-9/16	1-9/16	—	—	3/4	9-3/4
0401-C-227	56	8-5/8	47-5/8	3	6-15/16	1-7/16	3-7/8	10-3/16	1-3/8	2-1/8	2	1-5/8	1-1/2	1-3/4	3/4	11-3/4
0501-C-227	68	8-5/8	59-5/8	3	6-15/16	1-7/16	3-7/8	10-3/16	1-3/8	2-1/8	2	1-5/8	1-1/2	1-3/4	3/4	11-3/4
0602-C-227	80	8-5/8	71-5/8	3	6-15/16	1-7/16	3-7/8	10-3/16	1-3/8	2-1/8	2	1-5/8	1-1/2	1-3/4	3/4	11-3/4
0702-C-227	92	8-5/8	83-5/8	3	6-15/16	1-7/16	3-7/8	10-3/16	1-3/8	2-1/8	2	1-5/8	1-1/2	1-3/4	3/4	11-3/4
0503-D-227	69	10-3/4	59-5/8	4	7-7/16	1-15/16	4-1/2	11-5/8	1-3/8	2-5/8	2-3/4	1-3/4	2	2-1/2	3/4	14-3/8
0604-D-227	81	10-3/4	71-5/8	4	7-7/16	1-15/16	4-1/2	11-5/8	1-3/8	2-5/8	2-3/4	1-3/4	2	2-1/2	3/4	14-3/8
0702-D-227	93	10-3/4	83-5/8	4	7-7/16	1-15/16	4-1/2	11-5/8	1-3/8	2-5/8	2-3/4	1-3/4	2	2-1/2	3/4	14-3/8
0704-D-227	93	10-3/4	83-5/8	4	7-7/16	1-15/16	4-1/2	11-5/8	1-3/8	2-5/8	2-3/4	1-3/4	2	2-1/2	3/4	14-3/8
0804-D-227	105	10-3/4	95-5/8	4	7-7/16	1-15/16	4-1/2	11-5/8	1-3/8	2-5/8	2-3/4	1-3/4	2	2-1/2	3/4	14-3/8
0904-D-227	117	10-3/4	107-5/8	5	7-7/16	1-15/16	5-1/16	11-5/8	1-3/8	2-5/8	2-3/4	1-3/4	2	2-1/2	3/4	14-3/8
0804-E-227	105-1/2	12-3/4	95-5/8	5	7-11/16	2-3/16	5-3/4	12-5/8	1-5/8	2-5/8	3-1/4	1-3/4	2-1/2	2-3/4	3/4	16-3/8
0806-E-227	105-1/2	12-3/4	95-5/8	6	7-11/16	2-3/16	5-3/4	12-5/8	1-5/8	2-5/8	3-1/4	1-3/4	2-1/2	2-3/4	3/4	16-3/8
1004-F-227	130-1/2	14	119-5/8	6	8-3/16	2-11/16	5-3/4	13-1/4	1-5/8	3-1/8	3-3/4	3	2-5/8	2-7/8	3/4	17-1/2
1104-F-227	142-1/2	14	131-5/8	6	8-3/16	2-11/16	5-3/4	13-1/4	1-5/8	3-1/8	3-3/4	3	2-5/8	2-7/8	3/4	17-1/2
1004-G-227	131-1/2	16	119-5/8	8	8-11/16	3-3/16	7-1/16	14-1/4	2-1/8	3-1/8	4	3	3	3-1/4	3/4	19-1/2
1104-G-227	143-1/2	16	131-5/8	8	8-11/16	3-3/16	7-1/16	14-1/4	2-1/8	3-1/8	4	3	3	3-1/4	3/4	19-1/2
0903-H-227	119-1/2	18	107-5/8	8	8-11/16	3-3/16	7-1/16	15-1/4	2-1/8	3-5/8	4-3/4	3-1/2	3-1/4	3-3/4	3/4	21-1/2
1003-H-227	131-1/2	18	119-5/8	8	8-11/16	3-3/16	7-1/16	15-1/4	2-1/8	3-5/8	4-3/4	3-1/2	3-1/4	3-3/4	3/4	21-1/2
1205-H-227	155-1/2	18	143-5/8	8	8-11/16	3-3/16	7-1/16	15-1/4	2-1/8	3-5/8	4-3/4	3-1/2	3-1/4	3-3/4	3/4	21-1/2
1003-J-227	132-1/2	20	119-5/8	8	9-3/16	3-11/16	8-3/8	16-1/4	2-1/8	3-5/8	5	4-1/4	3-1/2	4-3/8	3/4	23-1/2
1104-J-227	144-1/2	20	131-5/8	10	9-3/16	3-11/16	8-3/8	16-1/4	2-1/8	3-5/8	5	4-1/4	3-1/2	4-3/8	3/4	23-1/2
1204-J-227	156-1/2	20	143-5/8	10	9-3/16	3-11/16	8-3/8	16-1/4	2-1/8	3-5/8	5	4-1/4	3-1/2	4-3/8	3/4	23-1/2
1206-J-227	155-1/2	20	143-5/8	10	8-11/16	3-11/16	8-3/8	16-1/4	2-1/8	3-5/8	5	4-1/4	3-1/2	4-3/8	3/4	23-1/2
0902-L-227	120-1/2	24	107-5/8	10	9-3/16	3-11/16	8-9/16	18-1/4	2-5/8	4-1/8	6-1/4	3-5/8	4-3/4	4-7/8	3/4	27-1/2
1002-L-227	132-1/2	24	119-5/8	10	9-3/16	3-11/16	8-9/16	18-1/4	2-5/8	4-1/8	6-1/4	3-5/8	4-3/4	4-7/8	3/4	27-1/2
1103-L-227	144-1/2	24	131-5/8	10	9-3/16	3-11/16	8-9/16	18-1/4	2-5/8	4-1/8	6-1/4	3-5/8	4-3/4	4-7/8	3/4	27-1/2
1203-L-227	156-1/2	24	143-5/8	10	9-3/16	3-11/16	8-9/16	18-1/4	2-5/8	4-1/8	6-1/4	3-5/8	4-3/4	4-7/8	3/4	27-1/2

Dimensions — 4 Pass (in.)

UNIT 10RT	A	B	C	D	E	F	G	H	J (ODF)	K (ODF)	L	M	P	Q	R	S
0401-A-147	56-3/8	5-9/16	47-5/8	2	7-7/16	1-5/16	3-3/16	8-5/8	5/8	1-1/8	1-3/4	1-3/4	—	—	3/4	8-1/2
0501-A-147	68-3/8	5-9/16	59-5/8	2	7-7/16	1-5/16	3-3/16	8-5/8	5/8	1-1/8	1-3/4	1-3/4	—	—	3/4	8-1/2
0501-B-147	67-3/4	6-5/8	59-5/8	2-1/2	6-13/16	1-5/16	3-7/16	9-3/16	7/8	1-3/8	2-1/8	2-1/8	—	—	3/4	9-3/4
0601-B-147	79-3/4	6-5/8	71-5/8	2-1/2	6-13/16	1-5/16	3-7/16	9-3/16	7/8	1-3/8	2-1/8	2-1/8	—	—	3/4	9-3/4
0401-C-247	56-5/8	8-5/8	47-5/8	3	7-9/16	1-7/16	3-7/8	10-3/16	1-1/8	1-3/8	3	3	1-25/64	1-25/64	3/4	11-3/4
0501-C-247	68-5/8	8-5/8	59-5/8	3	7-9/16	1-7/16	3-7/8	10-3/16	1-1/8	1-3/8	3	3	1-25/64	1-25/64	3/4	11-3/4
0602-C-247	80-5/8	8-5/8	71-5/8	3	7-9/16	1-7/16	3-7/8	10-3/16	1-1/8	1-3/8	3	3	1-25/64	1-25/64	3/4	11-3/4
0702-C-247	92-5/8	8-5/8	83-5/8	3	7-9/16	1-7/16	3-7/8	10-3/16	1-1/8	1-3/8	3	3	1-25/64	1-25/64	3/4	11-3/4
0503-D-247	69	10-3/4	59-5/8	4	7-7/16	1-15/16	4-1/2	11-5/8	1-1/8	2-1/8	4-1/16	3	1-1/8	2	3/4	14-3/8
0604-D-247	81	10-3/4	71-5/8	4	7-7/16	1-15/16	4-1/2	11-5/8	1-1/8	2-1/8	4-1/16	3	1-1/8	2	3/4	14-3/8
0702-D-247	93	10-3/4	83-5/8	4	7-7/16	1-15/16	4-1/2	11-5/8	1-1/8	2-1/8	4-1/16	3	1-1/8	2	3/4	14-3/8
0704-D-247	93	10-3/4	83-5/8	4	7-7/16	1-15/16	4-1/2	11-5/8	1-1/8	2-1/8	4-1/16	3	1-1/8	2	3/4	14-3/8
0804-D-247	105	10-3/4	95-5/8	4	7-7/16	1-15/16	4-1/2	11-5/8	1-1/8	2-1/8	4-1/16	3	1-1/8	2	3/4	14-3/8
0904-D-247	117	10-3/4	107-5/8	5	7-7/16	1-15/16	5-1/16	11-5/8	1-1/8	2-1/8	4-1/16	3	1-1/8	2	3/4	14-3/8
0804-E-247	105-1/2	12-3/4	95-5/8	5	7-11/16	2-3/16	5-3/4	12-5/8	1-3/8	2-1/8	4-3/8	3-1/2	2	2-1/2	3/4	16-3/8
0806-E-247	105-1/2	12-3/4	95-5/8	6	7-11/16	2-3/16	5-3/4	12-5/8	1-3/8	2-1/8	4-3/8	3-1/2	2	2-1/2	3/4	16-3/8
1004-F-247	130-1/2	14	119-5/8	6	8-3/16	2-11/16	5-3/4	13-1/4	1-3/8	2-5/8	5	4-1/8	1-7/8	2-5/8	3/4	17-1/2
1104-F-247	142-1/2	14	131-5/8	6	8-3/16	2-11/16	5-3/4	13-1/4	1-3/8	2-5/8	5	4-1/8	1-7/8	2-5/8	3/4	17-1/2
1004-G-247	131-1/2	16	119-5/8	8	8-11/16	3-3/16	7-1/16	14-1/4	1-5/8	2-5/8	6-1/4	3-7/8	1-5/8	3	3/4	19-1/2
1104-G-247	143-1/2	16	131-5/8	8	8-11/16	3-3/16	7-1/16	14-1/4	1-5/8	2-5/8	6-1/4	3-7/8	1-5/8	3	3/4	19-1/2
0903-H-247	119-1/2	18	107-5/8	8	8-11/16	3-3/16	7-1/16	15-1/4	1-5/8	2-5/8	6-3/8	4-1/2	2-5/8	3-3/8	3/4	21-1/2
1003-H-247	131-1/2	18	119-5/8	8	8-11/16	3-3/16	7-1/16	15-1/4	1-5/8	2-5/8	6-3/8	4-1/2	2-5/8	3-3/8	3/4	21-1/2
1205-H-247	155-1/2	18	143-5/8	8	8-11/16	3-3/16	7-1/16	15-1/4	1-5/8	2-5/8	6-3/8	4-1/2	2-5/8	3-3/8	3/4	21-1/2
1003-J-247	132-1/2	20	119-5/8	8	9-3/16	3-11/16	8-3/8	16-1/4	1-5/8	3-1/8	7-1/4	5	3-5/16	4	3/4	23-1/2
1104-J-247	144-1/2	20	131-5/8	10	9-3/16	3-11/16	8-3/8	16-1/4	1-5/8	3-1/8	7-1/4	5	3-5/16	4	3/4	23-1/2
1204-J-247	156-1/2	20	143-5/8	10	9-3/16	3-11/16	8-3/8	16-1/4	1-5/8	3-1/8	7-1/4	5	3-5/16	4	3/4	23-1/2
1206-J-247	155-1/2	20	143-5/8	10	8-11/16	3-11/16	8-3/8	16-1/4	1-5/8	3-1/8	7-1/4	5	3-5/16	4	3/4	23-1/2
0902-L-247	120-1/2	24	107-5/8	10	9-3/16	3-11/16	8-9/16	18-1/4	2-1/8	3-5/8	8-3/4	6-1/4	3-3/4	4-3/4	3/4	27-1/2
1002-L-247	132-1/2	24	119-5/8	10	9-3/16	3-11/16	8-9/16	18-1/4	2-1/8	3-5/8	8-3/4	6-1/4	3-3/4	4-3/4	3/4	27-1/2
1103-L-247	144-1/2	24	131-5/8	10	9-3/16	3-11/16	8-9/16	18-1/4	2-1/8	3-5/8	8-3/4	6-1/4	3-3/4	4-3/4	3/4	27-1/2
1203-L-247	156-1/2	24	143-5/8	10	9-3/16	3-11/16	8-9/16	18-1/4	2-1/8	3-5/8	8-3/4	6-1/4	3-3/4	4-3/4	3/4	27-1/2

Compressors, Chillers, Condensers
 Motors
 Electrical
 Heating Components
 Indoor Air Quality
 Thermostats
 Oils & Chemicals
 Accessories, Supplies & Commodities
 Tools & Instruments
 Refrigeration

Compressors, Chillers & Condensers

10RT SERIES DX COOLERS (7-1/2 to 350 Nominal Tons)

Water Ratings — R-22

6 F WATER TEMPERATURE RANGE; 4 GPM/TON

UNIT 10RT	LEAVING TEMPERATURE DIFFERENCE (LTD) (F)															
	5		6		7		8		9		10		11		12	
	Cap.	PD	Cap.	PD	Cap.	PD	Cap.	PD	Cap.	PD	Cap.	PD	Cap.	PD	Cap.	PD
0401-A	—	—	—	—	2.69	1.05	4.09	2.18	5.37	3.74	6.66	5.69	8.19	8.59	6.33	5.18
0501-A	2.24	0.99	3.67	2.23	5.12	4.32	6.58	7.08	8.17	10.89	6.52	7.08	8.20	10.89	—	—
0501-B	3.18	0.92	5.11	1.80	7.63	4.07	9.86	6.79	12.08	10.06	9.52	6.38	12.11	10.07	—	—
0601-B	5.63	2.79	8.17	5.87	10.51	9.67	7.79	5.33	10.90	10.37	—	—	—	—	—	—
0401-C	—	—	—	—	8.03	1.18	11.76	2.56	15.11	4.20	18.85	6.42	14.18	3.71	18.81	6.42
0501-C	6.59	1.09	10.24	2.40	14.42	4.81	18.54	7.85	13.24	4.05	18.05	7.38	—	—	—	—
0602-C	9.49	1.29	13.86	2.77	18.17	4.81	21.84	6.85	19.02	5.21	26.14	9.71	—	—	—	—
0702-C	13.65	3.12	17.62	5.14	21.42	7.59	21.40	7.59	—	—	—	—	—	—	—	—
0503-D	—	—	—	—	18.61	1.34	24.34	2.27	30.78	3.66	36.40	5.07	31.66	3.90	39.27	5.84
0604-D	—	—	16.99	0.96	23.71	1.52	29.52	2.32	35.26	3.28	31.87	2.69	42.97	4.91	—	—
0702-D	20.02	2.85	26.69	5.08	32.63	7.62	31.92	7.32	42.59	12.70	—	—	—	—	—	—
0704-D	16.67	1.01	23.34	1.69	29.40	2.66	26.61	2.21	37.26	4.30	—	—	—	—	—	—
0804-D	21.48	1.64	27.66	2.68	27.47	2.69	38.34	5.15	—	—	—	—	—	—	—	—
0904-D	25.06	2.70	25.84	2.89	37.99	6.16	50.16	10.53	62.38	15.91	—	—	—	—	—	—
0804-E	33.82	2.45	43.22	3.94	42.08	3.74	60.61	7.69	—	—	—	—	—	—	—	—
0806-E	26.99	1.30	37.34	2.38	45.78	3.44	46.94	3.61	65.56	6.76	84.26	10.82	102.82	15.66	—	—
1004-F	47.06	2.64	58.71	4.07	73.76	6.29	90.98	9.57	106.21	12.81	—	—	—	—	—	—
1104-F	52.60	3.74	70.01	6.55	86.25	9.76	102.57	13.60	—	—	—	—	—	—	—	—
1004-G	58.90	2.44	68.31	3.26	87.40	5.26	109.41	8.27	128.83	11.26	150.88	15.44	—	—	—	—
1104-G	61.88	3.16	82.55	5.54	103.33	8.56	124.27	12.20	147.95	17.38	—	—	—	—	—	—
0903-H	74.18	2.72	88.38	3.79	97.48	4.64	119.33	6.81	144.68	9.94	—	—	—	—	—	—
1003-H	80.75	3.71	93.28	4.96	117.17	7.66	144.82	11.65	—	—	—	—	—	—	—	—
1206-H	83.38	1.82	113.41	3.35	143.59	5.32	171.52	7.50	—	—	—	—	—	—	—	—
1003-J	100.08	3.30	116.03	4.41	150.12	7.35	180.40	10.36	—	—	—	—	—	—	—	—
1104-J	101.36	2.41	133.70	4.10	170.94	6.69	203.91	9.32	241.33	13.01	—	—	—	—	—	—
1204-J	120.62	4.04	158.17	6.88	193.50	10.10	233.48	14.73	—	—	—	—	—	—	—	—

8 F WATER TEMPERATURE RANGE; 3 GPM/TON

UNIT 10RT	LEAVING TEMPERATURE DIFFERENCE (LTD) (F)															
	5		6		7		8		9		10		11		12	
	Cap.	PD	Cap.	PD	Cap.	PD	Cap.	PD	Cap.	PD	Cap.	PD	Cap.	PD	Cap.	PD
0401-A	—	—	2.20	0.71	3.31	0.97	4.71	1.63	6.00	2.63	7.55	4.20	8.83	5.69	10.10	7.36
0501-A	2.87	0.95	4.48	1.88	6.11	3.50	7.57	5.34	8.99	7.52	7.39	5.06	9.78	8.89	11.51	11.97
0501-B	4.15	0.90	6.38	1.58	8.89	3.12	11.14	4.88	13.33	7.01	15.24	9.07	14.01	7.67	—	—
0601-B	7.02	2.42	9.70	4.68	12.02	7.22	13.97	9.67	13.22	8.66	—	—	—	—	—	—
0401-C	—	—	6.61	0.77	9.90	1.09	13.65	1.94	17.41	3.17	20.78	4.45	24.47	6.12	27.43	7.54
0501-C	8.97	1.11	13.14	2.26	16.86	3.68	20.97	5.72	24.50	7.73	21.66	6.03	27.63	9.63	—	—
0602-C	12.01	1.18	16.09	2.09	20.38	3.39	17.44	2.49	23.33	4.45	30.48	7.52	—	—	—	—
0702-C	16.24	2.48	20.12	3.80	18.87	3.34	25.77	6.21	34.12	10.77	—	—	—	—	—	—
0503-D	—	—	14.92	0.79	20.61	1.03	27.10	1.59	33.53	2.45	38.44	3.19	35.47	2.74	44.69	4.35
0604-D	13.05	0.66	19.29	0.84	26.00	1.10	31.75	1.52	27.20	1.12	36.30	1.99	47.49	3.40	56.77	4.79
0702-D	24.01	2.31	30.53	3.78	27.95	3.16	38.63	6.04	50.45	10.18	61.29	14.68	—	—	—	—
0704-D	19.94	0.92	26.55	1.25	31.99	1.79	31.86	1.80	42.56	3.17	53.36	4.94	—	—	—	—
0804-D	25.17	1.29	30.61	1.88	33.56	2.27	45.77	4.18	57.97	6.66	—	—	—	—	—	—
0904-D	28.13	1.92	31.27	2.35	44.97	4.86	58.59	8.25	69.47	11.24	82.68	15.92	—	—	—	—
0804-E	38.67	1.80	47.06	2.62	51.44	3.16	70.18	5.80	88.81	9.16	—	—	—	—	—	—
0806-E	30.55	1.06	40.82	1.66	48.21	2.22	53.85	2.74	70.53	4.50	89.37	7.00	108.16	10.01	126.64	13.45
1004-F	52.75	1.90	67.80	3.05	85.26	4.79	100.46	6.54	117.73	8.98	132.80	11.30	147.73	13.87	—	—
1104-F	63.66	3.10	80.11	4.79	98.73	7.29	115.03	9.76	130.97	12.58	—	—	—	—	—	—
1004-G	62.42	1.57	82.98	2.75	102.34	4.10	121.73	5.71	143.91	7.99	165.93	10.63	185.09	13.09	—	—
1104-G	76.24	2.72	98.76	4.51	119.65	6.52	140.64	8.89	161.51	11.62	181.96	14.68	—	—	—	—
0903-H	83.38	1.92	89.38	2.22	114.53	3.62	136.62	5.04	162.15	7.05	187.84	9.37	213.58	12.01	—	—
1003-H	84.43	2.30	112.03	4.04	136.20	5.84	164.03	8.43	191.93	11.46	—	—	—	—	—	—
1206-H	100.05	1.49	132.36	2.60	160.71	3.75	189.06	5.12	216.50	6.70	—	—	—	—	—	—
1003-J	104.93	2.05	139.37	3.59	173.80	5.55	208.49	7.92	243.33	10.69	—	—	—	—	—	—
1104-J	123.80	2.03	159.11	3.29	196.59	5.00	234.05	7.06	267.16	9.04	303.48	11.71	—	—	—	—
1204-J	145.33	3.29	185.85	5.37	221.35	7.48	261.01	10.45	295.33	13.29	—	—	—	—	—	—

LEGEND

- Cap. — Capacity (Tons)
- EFT — Entering Fluid Temperature
- LFT — Leaving Fluid Temperature
- PD — Pressure Drop (PSIG)
- SST — Refrigerant Saturated Suction Temperature

NOTES:

1. Ratings based on 35 F saturated suction temperature. Fouling factor is 0.0001.
2. Shaded selections are 2-pass. All other selections are 4-pass.
3. LTD = LFT - SST
4. Range = EFT - LFT

Compressors, Chillers & Condensers

10RT SERIES DX COOLERS (7-1/2 to 350 Nominal Tons)

Water Ratings - R22 (contd)

10 F WATER TEMPERATURE RANGE; 2.4 GPM/TON

UNIT 10RT	LEAVING TEMPERATURE DIFFERENCE (LTD) (F)															
	5		6		7		8		9		10		11		12	
	Cap.	PD	Cap.	PD	Cap.	PD	Cap.	PD	Cap.	PD	Cap.	PD	Cap.	PD	Cap.	PD
0401-A	—	—	2.53	0.68	3.79	0.90	5.06	1.19	6.62	2.05	7.92	2.92	9.43	4.21	10.69	5.38
0501-A	3.66	0.98	5.12	1.55	6.74	2.71	8.19	3.99	9.61	5.53	8.61	4.41	10.67	6.75	13.09	10.07
0501-B	5.10	0.89	7.61	1.46	9.86	2.45	12.09	3.68	14.06	4.95	12.73	4.09	15.90	6.38	19.11	9.07
0601-B	8.50	2.31	10.85	3.76	13.15	5.56	11.68	4.33	15.52	7.71	19.37	11.86	—	—	—	—
0401-C	—	—	8.02	0.75	11.35	0.99	15.12	1.51	18.90	2.37	22.60	3.43	25.90	4.45	24.46	4.00
0501-C	10.80	1.07	15.01	1.87	19.16	3.08	22.78	4.36	20.35	3.49	26.26	5.78	31.26	7.95	—	—
0602-C	13.87	1.08	18.18	1.73	21.88	2.49	20.41	2.17	27.60	4.02	33.58	5.84	40.82	8.51	—	—
0702-C	18.01	1.94	21.85	2.87	23.12	3.22	30.80	5.74	37.80	8.43	—	—	—	—	—	—
0503-D	—	—	16.84	0.73	23.31	0.94	29.00	1.16	34.66	1.66	40.26	2.25	39.20	2.15	48.52	3.30
0604-D	14.79	0.63	21.51	0.77	27.27	0.93	32.97	1.11	29.59	1.00	40.68	1.61	49.98	2.40	61.27	3.60
0702-D	26.75	1.83	33.18	2.86	34.48	3.10	45.27	5.32	56.07	8.04	69.00	12.11	—	—	—	—
0704-D	22.01	0.83	28.06	1.02	33.94	1.30	34.77	1.36	47.78	2.58	58.67	3.84	69.47	5.33	—	—
0804-D	26.91	1.05	27.45	1.08	38.27	1.88	51.82	3.45	64.08	5.25	73.81	6.80	—	—	—	—
0904-D	25.92	1.13	38.07	2.25	51.82	4.16	64.10	6.30	76.11	8.81	86.81	11.25	—	—	—	—
0804-E	42.18	1.39	42.11	1.39	60.68	2.83	79.50	4.79	98.23	7.25	116.66	10.10	—	—	—	—
0806-E	33.85	0.96	42.26	1.16	42.22	1.16	60.64	2.28	79.26	3.75	97.97	5.57	116.58	7.71	131.45	9.54
1004-F	60.30	1.58	76.67	2.51	94.19	3.76	111.47	5.26	126.53	6.69	141.56	8.29	—	—	—	—
1104-F	73.24	2.64	90.89	4.00	108.40	5.65	124.48	7.38	140.41	9.34	—	—	—	—	—	—
1004-G	72.22	1.34	94.51	2.29	114.16	3.26	136.30	4.65	155.68	6.00	175.06	7.51	196.72	9.53	—	—
1104-G	90.28	2.46	111.46	3.67	132.49	5.11	155.99	7.15	176.56	9.10	—	—	—	—	—	—
0903-H	91.50	1.50	102.53	1.86	128.10	2.87	153.67	4.10	179.25	5.54	204.80	7.19	230.36	9.04	255.79	11.09
1003-H	100.66	2.11	126.90	3.29	154.87	4.86	182.60	6.74	210.23	8.90	234.70	10.92	—	—	—	—
1206-H	116.28	1.30	144.65	1.97	176.80	2.94	204.85	3.91	232.47	5.01	—	—	—	—	—	—
1003-J	127.35	1.96	162.22	3.13	197.05	4.58	231.65	6.29	266.21	8.26	300.60	10.49	—	—	—	—
1104-J	145.77	1.81	183.80	2.84	221.27	4.10	254.15	5.32	290.95	6.99	—	—	—	—	—	—
1204-J	171.88	2.99	207.67	4.27	247.43	6.09	282.29	7.85	—	—	—	—	—	—	—	—

12 F WATER TEMPERATURE RANGE; 2 GPM/TON

UNIT 10RT	LEAVING TEMPERATURE DIFFERENCE (LTD) (F)															
	5		6		7		8		9		10		11		12	
	Cap.	PD	Cap.	PD	Cap.	PD	Cap.	PD	Cap.	PD	Cap.	PD	Cap.	PD	Cap.	PD
0401-A	—	—	2.99	0.68	4.12	0.82	5.66	1.11	6.95	1.57	8.49	2.37	9.78	3.12	11.05	3.99
0501-A	4.09	0.91	5.71	1.36	7.33	2.24	8.63	3.06	7.40	2.25	9.81	4.01	12.21	6.26	13.96	7.96
0501-B	5.75	0.84	8.27	1.20	10.77	2.04	12.77	2.84	11.40	2.30	14.04	3.44	17.76	5.58	20.45	7.23
0601-B	9.30	1.91	11.66	3.00	13.97	4.33	13.93	4.33	17.14	6.49	21.00	9.68	24.88	13.44	—	—
0401-C	6.13	0.61	9.41	0.74	13.14	0.97	16.89	1.33	20.65	1.99	24.36	2.79	27.32	3.48	26.47	3.25
0501-C	12.56	1.04	16.76	1.63	20.47	2.41	24.56	3.52	23.88	3.36	28.83	4.82	35.82	7.38	40.93	9.36
0602-C	15.32	1.00	19.64	1.40	23.35	1.97	23.34	1.97	30.57	3.41	37.77	5.21	43.82	6.85	52.18	9.71
0702-C	19.71	1.62	18.90	1.48	27.29	3.15	34.30	4.93	41.31	7.03	49.66	10.09	—	—	—	—
0503-D	13.03	0.60	18.66	0.70	24.35	0.84	30.78	1.04	36.44	1.28	33.60	1.14	41.29	1.64	52.26	2.66
0604-D	16.43	0.61	22.67	0.71	28.44	0.82	34.16	0.96	33.90	0.96	43.06	1.25	54.25	1.99	63.65	2.70
0702-D	29.34	1.54	27.94	1.41	38.65	2.68	50.62	4.62	61.44	6.75	74.32	9.84	85.14	12.71	—	—
0704-D	23.93	0.77	29.97	0.92	29.26	0.90	39.87	1.26	50.63	2.00	63.66	3.18	74.50	4.32	85.20	5.60
0804-D	29.10	0.95	30.66	1.00	42.83	1.64	55.11	2.70	67.43	4.02	79.58	5.60	91.51	7.36	—	—
0904-D	31.01	1.13	43.21	2.03	55.54	3.30	69.24	5.13	81.35	7.06	—	—	—	—	—	—
0804-E	45.56	1.14	47.05	1.20	65.75	2.30	84.61	3.76	105.37	5.82	122.10	7.70	140.47	10.10	—	—
0806-E	35.17	0.85	44.46	1.04	46.84	1.09	65.26	1.87	79.96	2.68	98.69	3.97	117.42	5.49	136.07	7.25
1004-F	67.48	1.39	85.01	2.18	100.44	2.96	118.00	4.07	135.16	5.35	—	—	—	—	—	—
1104-F	79.87	2.18	98.80	3.31	115.40	4.42	133.77	5.98	—	—	—	—	—	—	—	—
1004-G	83.08	1.25	102.65	1.86	125.18	2.75	147.57	3.81	167.05	4.82	188.92	6.19	—	—	—	—
1104-G	99.04	2.05	123.37	3.16	144.68	4.27	165.60	5.54	—	—	—	—	—	—	—	—
0903-H	89.75	1.01	115.25	1.64	144.20	2.57	169.88	3.53	195.47	4.64	221.10	5.89	246.71	7.29	272.24	8.83
1003-H	112.72	1.83	140.99	2.83	169.20	4.04	197.12	5.45	224.90	7.08	252.49	8.90	—	—	—	—
1206-H	127.44	1.09	159.96	1.71	188.37	2.32	216.63	3.03	—	—	—	—	—	—	—	—
1003-J	144.57	1.76	179.73	2.68	214.88	3.78	249.75	5.08	284.52	6.55	319.13	8.20	—	—	—	—
1104-J	164.31	1.61	202.48	2.41	240.45	3.37	273.54	4.29	310.50	5.54	—	—	—	—	—	—
1204-J	191.94	2.61	228.16	3.60	268.20	4.99	303.23	6.31	—	—	—	—	—	—	—	—

LEGEND

Cap.	—	Capacity (Tons)
EFT	—	Entering Fluid Temperature
LFT	—	Leaving Fluid Temperature
PD	—	Pressure Drop (PSIG)
SST	—	Refrigerant Saturated Suction Temperature

NOTES:

1. Ratings based on 35 F saturated suction temperature. Fouling factor is 0.0001.
2. Shaded selections are 2-pass. All other selections are 4-pass.
3. LTD = LFT - SST
4. Range = EFT - LFT

Compressors, Chillers & Condensers

10RT SERIES DX COOLERS (7-1/2 to 350 Nominal Tons)

Water Ratings — R-134a

6 F WATER TEMPERATURE RANGE; 4 GPM/TON

UNIT 10RT	LEAVING TEMPERATURE DIFFERENCE (LTD) (F)															
	5		6		7		8		9		10		11		12	
	Cap.	PD	Cap.	PD	Cap.	PD	Cap.	PD	Cap.	PD	Cap.	PD	Cap.	PD	Cap.	PD
0401-A	—	—	—	—	2.37	0.93	3.46	1.56	4.42	2.53	5.52	3.97	6.47	5.43	7.41	7.07
0501-A	1.94	0.87	3.06	1.55	4.19	2.90	5.31	4.68	6.33	6.66	7.16	8.42	7.97	10.37	8.60	11.96
0501-B	2.86	0.84	4.46	1.38	6.20	2.68	7.93	4.42	9.27	5.96	10.66	7.89	11.82	9.56	12.73	11.12
0601-B	4.67	1.91	6.57	3.84	8.14	5.87	9.51	8.02	10.69	10.02	12.38	13.43	—	—	—	—
0401-C	—	—	—	—	7.05	1.03	9.86	1.80	12.66	3.00	15.07	4.20	17.48	5.54	19.79	7.05
0501-C	5.70	0.94	8.69	1.74	11.68	3.17	14.39	4.82	16.81	6.47	18.92	8.10	20.29	9.36	—	—
0602-C	8.00	1.04	10.94	1.72	13.80	2.77	16.08	3.72	18.18	4.82	21.82	6.85	—	—	—	—
0702-C	10.33	1.75	13.24	2.93	15.44	3.97	18.03	5.41	23.96	9.44	—	—	—	—	—	—
0503-D	—	—	10.33	0.74	14.97	1.00	19.59	1.48	23.47	2.10	27.54	2.93	30.82	3.67	33.50	4.35
0604-D	9.11	0.64	13.67	0.80	18.20	1.02	22.60	1.38	26.03	1.82	29.04	2.23	36.18	3.50	43.21	4.91
0702-D	15.67	1.75	20.00	2.86	23.64	4.01	26.71	5.10	34.81	8.54	44.04	13.48	—	—	—	—
0704-D	13.36	0.83	17.97	1.10	21.94	1.51	25.20	2.00	31.83	3.17	39.97	4.93	—	—	—	—
0804-D	21.64	0.66	20.32	1.47	23.43	1.94	32.19	3.65	41.38	6.00	—	—	—	—	—	—
0904-D	25.08	0.94	26.05	2.18	31.18	4.15	41.36	7.33	50.04	10.54	58.56	14.27	65.65	17.65	72.60	21.37
0804-E	33.14	0.72	31.52	2.13	36.23	2.79	49.33	5.06	63.39	8.26	—	—	—	—	—	—
0806-E	32.25	0.61	28.00	1.41	33.30	1.93	41.94	2.97	54.01	4.68	69.92	7.69	82.05	10.27	94.08	13.15
1004-F	43.61	2.03	54.46	3.5	67.59	5.35	79.55	7.31	91.41	9.57	102.79	12.13	113.10	14.59	63.00	17.28
1104-F	49.38	3.31	62.39	5.17	75.19	7.45	87.72	10.12	98.76	12.78	108.74	15.30	59.72	18.03	61.47	20.96
1004-G	55.60	1.73	64.71	2.92	81.53	4.61	98.15	6.68	113.42	8.83	128.42	11.26	141.85	13.62	154.99	16.18
1104-G	61.84	2.96	76.33	4.76	92.78	6.97	109.03	9.59	123.68	12.20	137.68	15.12	150.37	17.85	78.27	20.78
0903-H	58.37	1.70	72.39	2.57	93.21	4.25	111.04	5.89	131.93	8.30	152.70	11.10	—	—	—	—
1003-H	69.66	2.47	88.67	4.49	108.03	6.51	130.55	9.56	149.89	12.39	—	—	—	—	—	—
1206-H	83.23	1.71	102.44	2.74	124.56	4.01	144.62	5.32	163.64	6.81	180.67	8.23	102.67	9.78	105.64	11.45
1003-J	86.43	2.35	110.46	3.99	138.72	6.29	163.04	8.50	191.02	11.70	—	—	—	—	—	—
1104-J	98.00	2.27	126.47	3.73	152.49	5.32	178.43	7.19	205.72	9.61	228.35	11.71	250.39	14.02	—	—
1204-J	113.30	3.60	141.25	5.50	168.77	7.79	195.63	10.45	217.62	12.70	240.42	15.57	131.95	18.25	135.91	21.12

8 F WATER TEMPERATURE RANGE; 3 GPM/TON

UNIT 10RT	LEAVING TEMPERATURE DIFFERENCE (LTD) (F)															
	5		6		7		8		9		10		11		12	
	Cap.	PD	Cap.	PD	Cap.	PD	Cap.	PD	Cap.	PD	Cap.	PD	Cap.	PD	Cap.	PD
0401-A	—	—	—	—	2.84	0.85	3.80	1.11	4.90	1.75	5.99	2.63	6.94	3.53	7.86	4.57
0501-A	2.46	0.83	3.68	1.26	4.73	2.05	5.91	3.27	6.77	4.25	7.67	5.50	8.14	6.26	9.80	8.89
0501-B	3.66	0.81	5.40	1.15	7.02	1.92	8.61	2.90	10.15	4.08	11.42	5.18	11.50	5.19	14.06	7.67
0601-B	5.81	1.68	7.41	2.70	8.94	3.96	10.29	5.27	11.25	6.33	14.00	9.67	—	—	—	—
0401-C	—	—	5.67	0.70	8.46	0.94	11.28	1.32	14.08	2.08	16.49	2.84	18.82	3.71	21.10	4.64
0501-C	7.49	0.93	10.49	1.43	13.25	2.26	15.91	3.30	18.26	4.39	20.36	5.41	22.83	6.69	—	—
0602-C	9.80	0.96	12.71	1.32	15.22	1.90	17.42	2.49	19.67	3.16	24.82	5.02	30.57	7.52	36.31	10.50
0702-C	12.20	1.40	14.59	1.99	16.75	2.62	22.23	4.67	27.49	7.02	33.45	10.26	—	—	—	—
0503-D	—	—	12.60	0.71	16.86	0.86	21.46	1.08	25.24	1.38	28.94	1.82	32.26	2.26	37.23	3.04
0604-D	11.31	0.62	15.84	0.73	19.90	0.86	23.79	1.01	27.22	1.12	30.61	1.42	38.60	2.24	47.58	3.40
0702-D	18.34	1.36	22.08	1.94	25.63	2.65	32.05	4.13	41.29	6.89	50.47	10.18	58.55	13.48	—	—
0704-D	15.65	0.76	19.92	0.92	23.35	1.07	26.64	1.26	34.74	2.11	44.01	3.37	53.21	4.94	61.17	6.46
0804-D	18.44	0.91	22.13	1.09	27.62	1.53	36.83	2.69	46.07	4.19	55.11	6.01	62.81	7.71	—	—
0904-D	24.62	0.94	27.59	1.87	36.43	3.19	46.63	5.25	55.18	7.35	62.37	9.20	69.48	11.25	—	—
0804-E	28.70	1.09	34.02	1.41	42.34	2.13	58.38	4.06	72.48	6.19	84.54	8.27	97.96	11.08	—	—
0806-E	24.03	0.86	29.89	1.04	35.09	1.25	46.67	2.12	60.65	3.45	74.64	5.08	86.72	6.66	98.67	8.45
1004-F	49.83	1.70	61.99	2.56	76.19	3.87	88.01	5.12	98.66	6.35	109.18	7.71	120.21	9.42	—	—
1104-F	57.54	2.53	71.65	3.90	83.35	5.17	95.46	6.84	105.64	8.24	56.64	10.03	58.34	11.70	—	—
1004-G	60.41	1.48	75.94	2.29	92.89	3.39	109.43	4.72	123.22	5.89	136.89	7.19	151.35	8.83	—	—
1104-G	70.33	2.30	88.54	3.64	104.94	5.07	119.52	6.52	133.84	8.14	147.80	9.94	74.65	11.61	—	—
0903-H	65.99	1.23	85.33	2.02	106.46	3.11	127.37	4.44	145.41	5.67	165.81	7.41	183.42	8.96	200.91	10.65
1003-H	81.83	2.18	103.12	3.41	125.83	5.08	145.09	6.65	163.99	8.43	182.65	10.4	200.98	12.57	—	—
1206-H	93.90	1.33	116.23	2.00	137.99	2.81	157.44	3.63	176.41	4.55	96.94	5.42	99.80	6.37	102.61	7.21
1003-J	103.98	2.05	130.55	3.16	157.00	4.51	184.98	6.29	208.72	7.92	232.2	9.72	255.35	11.69	—	—
1104-J	117.08	1.83	145.75	2.79	171.97	3.82	197.25	5.00	222.01	6.34	244.65	7.63	—	—	—	—
1204-J	134.00	2.85	162.17	4.09	188.83	5.56	212.94	7.03	234.9	8.42	125.53	10.19	129.38	11.83	133.16	13.58

LEGEND

- Cap. — Capacity (Tons)
- EFT — Entering Fluid Temperature
- LFT — Leaving Fluid Temperature
- PD — Pressure Drop (PSIG)
- SST — Refrigerant Saturated Suction Temperature

NOTES:

1. Ratings based on 35 F saturated suction temperature. Fouling factor is 0.0001.
2. Shaded selections are 2-pass. All other selections are 4-pass.
3. LTD = LFT - SST
4. Range = EFT - LFT

Compressors, Chillers & Condensers

10RT SERIES DX COOLERS (7-1/2 to 350 Nominal Tons)

Water Ratings — R-134a (cont)

10 F WATER TEMPERATURE RANGE; 2.4 GPM/TON

UNIT 10RT	LEAVING TEMPERATURE DIFFERENCE (LTD) (F)															
	5		6		7		8		9		10		11		12	
	Cap.	PD	Cap.	PD	Cap.	PD	Cap.	PD	Cap.	PD	Cap.	PD	Cap.	PD	Cap.	PD
0401-A	—	—	2.21	0.64	3.17	0.78	4.26	1.00	5.35	1.34	6.31	1.87	7.26	2.47	8.19	3.16
0501-A	3.06	0.83	4.11	1.09	5.30	1.68	6.32	2.39	7.19	3.06	8.15	4.00	9.00	4.85	10.66	6.75
0501-B	4.45	0.80	6.06	1.04	7.67	1.46	9.25	2.14	10.78	2.95	12.07	3.69	13.33	4.52	15.9	6.38
0601-B	6.60	1.39	8.17	2.11	9.69	3.00	11.04	3.90	13.16	5.57	15.61	7.71	18.68	10.96	—	—
0401-C	—	—	7.05	0.70	9.85	0.88	12.28	1.08	15.06	1.51	17.46	2.03	19.84	2.62	22.12	3.30
0501-C	9.00	0.90	11.98	1.19	14.69	1.80	17.32	2.53	19.51	3.18	21.53	3.92	26.33	5.78	31.19	7.95
0602-C	10.95	0.87	13.82	1.08	16.33	1.40	18.54	1.80	23.19	2.84	27.79	4.02	33.51	5.84	39.19	7.94
0702-C	13.34	1.12	15.86	1.51	18.94	2.14	25.67	3.98	30.93	5.74	36.81	8.07	42.01	10.36	—	—
0503-D	9.81	0.58	14.05	0.66	18.66	0.79	22.49	0.91	26.29	1.06	30.02	1.24	31.80	1.41	39.32	2.15
0604-D	12.51	0.59	17.02	0.67	21.02	0.76	24.93	0.86	28.37	0.96	33.92	1.13	40.97	1.62	49.93	2.40
0702-D	20.08	1.11	24.02	1.49	28.03	2.02	37.33	3.60	46.56	5.65	54.62	7.68	62.65	9.98	70.6	12.56
0704-D	17.28	0.71	21.27	0.81	24.71	0.91	29.43	1.07	39.78	1.80	47.90	2.58	56.02	3.50	64.04	4.57
0804-D	19.97	0.81	23.67	0.93	32.15	1.34	41.35	2.19	50.46	3.26	58.38	4.31	67.14	5.76	73.76	6.80
0904-D	24.22	0.97	31.28	1.52	41.48	2.68	50.23	3.89	58.85	5.34	67.17	7.01	—	—	—	—
0804-E	31.07	0.95	36.43	1.11	51.27	2.05	65.31	3.28	79.26	4.80	91.30	6.29	103.12	7.93	114.79	9.72
0806-E	25.76	0.77	31.59	0.90	37.4	1.05	51.31	1.68	63.36	2.45	77.25	3.55	89.29	4.62	102.90	6.08
1004-F	55.93	1.37	69.12	2.06	82.14	2.90	94.04	3.76	105.7	4.73	116.21	5.67	—	—	—	—
1104-F	65.21	2.11	78.08	2.98	90.70	4.00	102.13	5.02	113.11	6.15	—	—	—	—	68.28	9.76
1004-G	68.42	1.21	86.70	1.94	102.19	2.65	117.57	3.48	132.55	4.40	147.25	5.44	159.76	6.29	—	—
1104-G	80.50	1.95	98.52	2.92	113.61	3.8	128.38	4.81	143.79	6.09	—	—	—	—	87.46	9.51
0903-H	76.80	1.07	98.00	1.71	119.14	2.51	140.04	3.46	157.88	4.33	178.27	5.54	195.90	6.62	213.41	7.79
1003-H	93.92	1.83	116.89	2.83	136.47	3.78	158.56	5.15	177.46	6.40	196.09	7.78	—	—	—	—
1206-H	104.96	1.07	127.07	1.55	147.06	2.04	166.71	2.60	185.89	3.22	94.67	3.91	—	—	—	—
1003-J	119.04	1.71	145.72	2.51	174.18	3.59	200.07	4.71	225.57	5.99	249.05	7.24	—	—	—	—
1104-J	133.11	1.52	161.62	2.21	189.66	3.03	214.93	3.87	237.98	4.69	—	—	—	—	—	—
1204-J	151.02	2.33	178.80	3.23	205.72	4.27	228.20	5.14	119.42	6.26	123.21	7.48	—	—	—	—

12 F WATER TEMPERATURE RANGE; 2 GPM/TON

UNIT 10RT	LEAVING TEMPERATURE DIFFERENCE (LTD) (F)															
	5		6		7		8		9		10		11		12	
	Cap.	PD	Cap.	PD	Cap.	PD	Cap.	PD	Cap.	PD	Cap.	PD	Cap.	PD	Cap.	PD
0401-A	—	—	2.53	0.63	3.48	0.73	4.58	0.90	5.66	1.11	6.62	1.43	7.57	1.87	8.51	2.37
0501-A	3.47	0.80	4.52	0.99	5.71	1.36	6.73	1.88	7.59	2.37	8.15	2.78	9.82	4.01	11.49	5.48
0501-B	5.07	0.77	6.68	0.96	8.29	1.20	9.86	1.70	11.30	2.23	11.49	2.30	14.60	3.77	17.17	5.21
0601-B	7.20	1.15	8.91	1.76	10.31	2.34	11.60	3.00	14.69	4.84	17.14	6.50	20.21	9.00	23.26	11.86
0401-C	5.41	0.58	7.99	0.68	10.80	0.82	13.22	0.97	16.01	1.19	18.74	1.65	20.80	2.00	21.67	2.19
0501-C	10.18	0.86	13.17	1.09	15.88	1.46	18.51	2.01	20.71	2.49	23.97	3.36	28.78	4.82	33.62	6.47
0602-C	12.03	0.81	14.90	0.98	17.42	1.11	19.65	1.40	24.81	2.23	30.62	3.41	36.33	4.83	40.92	6.00
0702-C	14.59	1.02	17.09	1.23	22.25	2.07	28.26	3.35	34.22	4.94	39.46	6.48	44.67	8.19	49.84	10.09
0503-D	11.18	0.57	15.03	0.63	19.64	0.72	23.84	0.82	27.95	0.95	31.65	1.07	33.79	1.14	41.30	1.64
0604-D	13.62	0.58	18.12	0.64	22.13	0.70	26.05	0.78	29.49	0.85	36.18	1.02	43.22	1.26	52.15	1.83
0702-D	21.98	1.01	25.91	1.22	32.01	1.84	41.30	3.07	50.58	4.63	58.67	6.20	66.70	7.92	74.66	9.84
0704-D	18.58	0.67	22.59	0.75	26.04	0.82	32.13	0.98	42.44	1.43	50.57	2.01	58.71	2.68	66.83	3.46
0804-D	21.46	0.75	26.07	0.87	35.24	1.12	44.43	1.76	53.57	2.56	61.51	3.33	70.43	4.40	78.02	5.39
0904-D	25.92	0.94	34.76	1.32	44.97	2.19	53.75	3.10	62.40	4.17	70.85	5.40	—	—	—	—
0804-E	33.39	0.87	41.99	1.07	56.03	1.70	70.09	2.63	84.08	3.76	97.90	5.09	108.22	6.09	121.36	7.70
0806-E	27.00	0.71	32.89	0.81	39.88	0.94	53.78	1.30	65.83	1.87	79.75	2.68	93.54	3.62	105.50	4.52
1004-F	61.60	1.17	73.86	1.63	87.96	2.32	99.92	2.96	111.68	3.68	—	—	—	—	—	—
1104-F	70.31	1.70	83.33	2.35	96.09	3.10	108.48	3.96	—	—	—	—	—	—	—	—
1004-G	75.90	1.04	94.30	1.60	109.90	2.14	125.39	2.75	140.68	3.44	155.46	4.20	—	—	—	—
1104-G	88.68	1.66	106.81	2.39	123.25	3.16	138.16	3.92	—	—	—	—	—	—	—	—
0903-H	85.53	0.92	106.86	1.41	128.19	2.01	149.41	2.72	170.18	3.53	188.04	4.25	208.23	5.25	—	—
1003-H	105.26	1.62	126.78	2.30	149.66	3.21	169.03	4.04	188.12	4.96	206.91	5.97	—	—	—	—
1206-H	113.47	0.88	135.76	1.23	157.59	1.65	177.28	2.06	—	—	—	—	—	—	—	—
1003-J	133.15	1.50	162.06	2.20	190.64	3.03	214.92	3.78	238.91	4.62	265.64	5.79	—	—	—	—
1104-J	146.00	1.27	176.83	1.86	203.04	2.41	228.86	3.03	253.69	3.73	—	—	—	—	—	—
1204-J	165.03	1.94	193.05	2.61	220.34	3.39	244.79	4.15	—	—	—	—	—	—	153.43	7.48

LEGEND

- Cap. — Capacity (Tons)
- EFT — Entering Fluid Temperature
- LFT — Leaving Fluid Temperature
- PD — Pressure Drop (PSIG)
- SST — Refrigerant Saturated Suction Temperature

NOTES:

1. Ratings based on 35 F saturated suction temperature. Fouling factor is 0.0001.
2. Shaded selections are 2-pass. All other selections are 4-pass.
3. LTD = LFT - SST
4. Range = EFT - LFT

Compressors, Chillers & Condensers

10RT SERIES DX COOLERS (7-1/2 to 350 Nominal Tons)

Water Ratings - R507/440A

6 F WATER TEMPERATURE RANGE; 4 GPM/TON

UNIT 10RT	LEAVING TEMPERATURE DIFFERENCE (LTD) (F)															
	5		6		7		8		9		10		11		12	
	Cap.	PD	Cap.	PD	Cap.	PD	Cap.	PD	Cap.	PD	Cap.	PD	Cap.	PD	Cap.	PD
0401-A	—	—	2.20	0.87	3.31	1.42	4.72	2.90	6.01	4.67	7.29	6.78	8.80	9.90	7.26	6.78
0501-A	2.67	1.17	4.28	3.04	5.74	5.42	7.17	8.42	5.70	5.43	7.37	8.89	—	—	—	—
0501-B	3.98	1.11	6.33	2.82	8.57	5.15	10.77	8.12	8.26	4.79	10.83	8.12	—	—	—	—
0601-B	6.59	3.83	8.93	7.04	11.07	10.73	9.35	7.69	—	—	—	—	—	—	—	—
0401-C	—	—	6.57	0.97	9.88	1.80	13.24	3.22	16.95	5.25	20.65	7.70	16.90	5.25	20.79	7.70
0501-C	8.09	1.50	12.02	3.33	16.14	6.03	19.75	8.85	15.66	5.62	—	—	—	—	—	—
0602-C	10.95	1.72	15.28	3.38	18.95	5.20	16.77	4.07	23.24	7.75	—	—	—	—	—	—
0702-C	14.56	3.53	11.95	2.39	18.00	5.41	24.87	10.09	—	—	—	—	—	—	—	—
0503-D	—	—	14.90	1.00	20.59	1.62	27.02	2.82	32.60	4.12	27.97	3.03	35.55	4.82	44.83	7.55
0604-D	—	—	19.24	1.09	25.01	1.66	—	—	28.34	2.15	38.49	3.95	—	—	—	—
0702-D	21.94	3.45	—	—	26.65	5.09	37.27	9.94	—	—	—	—	—	—	—	—
0704-D	18.64	1.14	24.68	1.89	—	—	31.93	3.16	42.64	5.59	—	—	—	—	—	—
0804-D	22.90	1.87	—	—	32.19	3.64	44.36	6.89	—	—	—	—	—	—	—	—
0904-D	—	—	31.04	4.14	43.22	7.94	55.35	12.71	67.42	18.54	—	—	—	—	—	—
0804-E	35.15	2.61	32.81	2.29	51.30	5.54	67.93	9.46	—	—	—	—	—	—	—	—
0806-E	29.32	1.51	38.53	2.52	39.70	2.67	56.18	5.06	74.87	8.67	93.34	13.14	108.24	16.99	—	—
1004-F	43.98	2.33	58.76	4.07	73.66	6.29	88.60	8.98	105.54	12.81	—	—	—	—	—	—
1104-F	52.71	3.74	69.95	6.55	85.92	9.76	101.86	13.60	—	—	—	—	—	—	—	—
1004-G	—	—	68.42	3.26	87.37	5.26	106.43	7.72	128.21	11.26	147.3	14.70	—	—	—	—
1104-G	62.05	3.16	82.57	5.54	103.09	8.56	123.64	12.20	144.11	16.46	—	—	—	—	—	—
0903-H	72.00	2.57	74.51	2.72	97.52	4.64	119.21	6.81	144.29	9.94	—	—	—	—	—	—
1003-H	69.96	2.83	93.40	4.96	117.1	7.66	141.11	10.93	—	—	—	—	—	—	—	—
1206-H	85.71	1.94	113.38	3.35	141.19	5.12	166.77	7.04	—	—	—	—	—	—	—	—
1003-J	86.96	2.51	116.20	4.41	147.92	7.08	179.96	10.36	—	—	—	—	—	—	—	—
1104-J	101.64	2.41	133.79	4.10	170.59	6.69	202.99	9.32	235.46	12.36	—	—	—	—	—	—
1204-J	120.82	4.04	157.94	6.88	192.64	10.10	227.22	13.90	—	—	—	—	—	—	—	—

8 F WATER TEMPERATURE RANGE; 3 GPM/TON

UNIT 10RT	LEAVING TEMPERATURE DIFFERENCE (LTD) (F)															
	5		6		7		8		9		10		11		12	
	Cap.	PD	Cap.	PD	Cap.	PD	Cap.	PD	Cap.	PD	Cap.	PD	Cap.	PD	Cap.	PD
0401-A	—	—	2.68	0.81	3.94	1.14	5.35	2.10	6.65	3.21	8.17	4.93	6.62	3.22	8.22	4.93
0501-A	3.49	1.13	5.10	2.42	6.56	3.98	7.99	5.93	6.57	3.99	8.96	7.52	10.68	10.37	—	—
0501-B	5.10	1.10	7.34	2.10	9.59	3.58	11.80	5.46	10.14	4.08	12.74	6.38	15.93	9.81	—	—
0601-B	8.12	3.29	10.45	5.46	8.53	3.62	11.68	6.77	15.50	11.85	—	—	—	—	—	—
0401-C	5.18	0.67	8.44	0.94	11.77	1.44	15.52	2.52	18.88	3.71	22.55	5.25	19.74	4.07	24.45	6.12
0501-C	10.74	1.51	14.44	2.69	18.56	4.52	14.43	2.70	20.30	5.41	25.23	8.10	—	—	—	—
0602-C	13.47	1.47	17.48	2.49	14.57	1.73	20.44	3.40	27.58	6.21	33.59	8.95	—	—	—	—
0702-C	17.11	2.75	15.47	2.23	22.37	4.67	30.00	8.34	—	—	—	—	—	—	—	—
0503-D	—	—	16.90	0.86	23.35	1.18	29.04	1.82	24.19	1.28	31.75	2.19	41.00	3.68	48.74	5.07
0604-D	15.31	0.72	21.53	0.92	27.27	1.12	22.76	0.96	31.82	1.52	42.96	2.79	52.28	4.07	—	—
0702-D	25.39	2.58	22.69	2.06	33.34	4.48	45.15	8.22	55.92	12.33	—	—	—	—	—	—
0704-D	21.38	0.98	27.35	1.32	26.62	1.26	37.25	2.43	48.05	4.00	58.81	5.93	—	—	—	—
0804-D	—	—	27.50	1.53	39.63	3.15	51.85	5.36	62.75	7.70	—	—	—	—	—	—
0904-D	25.88	1.65	38.02	3.49	51.66	6.45	62.42	9.20	74.35	12.9	—	—	—	—	—	—
0804-E	—	—	42.17	2.13	60.78	4.38	79.45	7.41	97.95	11.07	—	—	—	—	—	—
0806-E	32.84	1.10	—	—	46.63	2.12	61.18	3.44	79.90	5.68	98.66	8.44	117.04	11.68	—	—
1004-F	52.92	1.90	67.87	3.05	85.11	4.79	100.04	6.54	114.99	8.55	—	—	—	—	—	—
1104-F	63.78	3.10	80.01	4.79	96.14	6.84	112.10	9.24	—	—	—	—	—	—	—	—
1004-G	64.12	1.67	83.10	2.75	102.27	4.10	121.39	5.71	140.58	7.59	159.71	9.71	—	—	—	—
1104-G	77.98	2.86	98.72	4.51	119.27	6.52	139.79	8.89	—	—	—	—	—	—	—	—
0903-H	68.15	1.31	89.59	2.22	114.59	3.62	136.49	5.04	161.69	7.05	186.96	9.37	212.18	12.01	—	—
1003-H	86.53	2.43	112.16	4.04	136.09	5.84	163.49	8.43	187.70	10.93	—	—	—	—	—	—
1206-H	102.41	1.57	132.24	2.60	160.04	3.75	187.58	5.12	—	—	—	—	—	—	—	—
1003-J	109.80	2.27	139.57	3.59	173.66	5.55	207.83	7.92	238.10	10.20	—	—	—	—	—	—
1104-J	126.55	2.13	159.14	3.29	196.05	5.00	228.52	6.69	—	—	—	—	—	—	—	—
1204-J	148.04	3.44	185.40	5.37	220.09	7.48	—	—	—	—	—	—	—	—	—	—

LEGEND

- Cap. — Capacity (Tons)
- EFT — Entering Fluid Temperature
- LFT — Leaving Fluid Temperature
- PD — Pressure Drop (PSIG)
- SST — Refrigerant Saturated Suction Temperature

NOTES:

1. Ratings based on 35 F saturated suction temperature. Fouling factor is 0.0001.
2. Shaded selections are 2-pass. All other selections are 4-pass.
3. LTD = LFT - SST
4. Range = EFT - LFT

Compressors, Chillers & Condensers

10RT SERIES DX COOLERS (7-1/2 to 350 Nominal Tons)

Water Ratings — R-507/404A (cont)

10 F WATER TEMPERATURE RANGE; 2.4 GPM/TON

UNIT 10RT	LEAVING TEMPERATURE DIFFERENCE (LTD) (F)															
	5		6		7		8		9		10		11		12	
	Cap.	PD	Cap.	PD	Cap.	PD	Cap.	PD	Cap.	PD	Cap.	PD	Cap.	PD	Cap.	PD
0401-A	—	—	3.16	0.78	4.42	1.03	5.97	1.68	7.26	2.47	8.54	3.41	7.55	2.69	9.43	4.22
0501-A	4.28	1.10	5.74	1.95	7.33	3.23	5.74	1.95	7.79	3.61	9.85	5.77	12.26	8.89	14.68	12.63
0501-B	6.06	1.04	8.31	1.72	10.78	2.94	8.30	1.72	11.46	3.31	14.64	5.42	17.83	7.94	—	—
0601-B	9.13	2.64	11.27	4.03	10.13	3.24	13.98	6.24	17.82	10.09	—	—	—	—	—	—
0401-C	6.59	0.67	9.88	0.88	13.23	1.15	17.01	1.92	20.71	2.87	17.86	2.14	22.56	3.43	27.30	4.92
0501-C	12.60	1.31	16.75	2.35	20.36	3.48	17.97	2.71	23.89	4.82	28.88	6.82	—	—	—	—
0602-C	15.30	1.22	18.97	1.87	17.52	1.59	24.70	3.21	30.69	4.91	37.90	7.38	45.15	10.34	—	—
0702-C	12.87	1.08	19.70	2.33	27.39	4.53	34.36	7.02	42.70	10.77	—	—	—	—	—	—
0503-D	13.95	0.66	19.60	0.82	25.28	1.02	30.87	1.32	26.26	1.06	35.48	1.75	44.83	2.80	54.13	4.08
0604-D	17.07	0.67	23.70	0.83	28.89	0.98	27.12	0.93	36.20	1.28	45.46	1.99	56.73	3.09	67.89	4.43
0702-D	—	—	29.20	2.22	39.94	4.13	50.76	6.64	63.66	10.38	74.33	13.95	—	—	—	—
0704-D	23.88	0.89	—	—	30.66	1.12	42.47	2.04	53.29	3.18	64.17	4.56	74.78	6.14	—	—
0804-D	—	—	32.19	1.34	44.40	2.52	57.92	4.30	67.62	5.75	—	—	—	—	—	—
0904-D	31.17	1.52	44.83	3.13	57.09	5.02	69.04	7.35	—	—	—	—	—	—	—	—
0804-E	32.91	1.00	51.37	2.04	70.07	3.75	88.91	5.96	105.45	8.27	121.87	10.88	—	—	—	—
0806-E	35.15	0.98	35.13	0.98	51.42	1.68	69.93	2.97	88.55	4.62	103.41	6.07	121.78	8.30	—	—
1004-F	61.62	1.66	76.72	2.51	93.97	3.76	108.89	4.99	—	—	—	—	—	—	—	—
1104-F	73.33	2.64	89.57	3.87	105.65	5.33	—	—	—	—	—	—	—	—	—	—
1004-G	75.41	1.48	94.63	2.29	114.05	3.26	135.74	4.65	152.14	5.71	—	—	—	—	—	—
1104-G	90.45	2.46	111.36	3.67	131.89	5.11	152.03	6.79	—	—	—	—	—	—	—	—
0903-H	80.99	1.18	106.05	2.02	128.18	2.87	153.47	4.10	178.65	5.54	203.61	7.19	—	—	—	—
1003-H	102.77	2.21	130.49	3.53	154.66	4.86	178.64	6.40	205.59	8.52	—	—	—	—	—	—
1206-H	116.51	1.30	144.48	1.97	172.08	2.77	—	—	—	—	—	—	—	—	—	—
1003-J	127.77	1.96	162.38	3.13	196.80	4.58	226.78	5.99	260.51	7.92	—	—	—	—	—	—
1104-J	146.11	1.81	183.71	2.84	216.12	3.87	248.18	5.06	—	—	—	—	—	—	—	—
1204-J	171.92	2.99	206.87	4.27	241.04	5.76	—	—	—	—	—	—	—	—	—	—

12 F WATER TEMPERATURE RANGE; 2 GPM/TON

UNIT 10RT	LEAVING TEMPERATURE DIFFERENCE (LTD) (F)															
	5		6		7		8		9		10		11		12	
	Cap.	PD	Cap.	PD	Cap.	PD	Cap.	PD	Cap.	PD	Cap.	PD	Cap.	PD	Cap.	PD
0401-A	2.37	0.61	3.49	0.73	4.89	0.96	6.30	1.29	7.58	1.87	8.86	2.54	8.21	2.20	10.10	3.33
0501-A	4.71	1.04	6.17	1.55	7.76	2.50	6.93	2.00	8.99	3.36	11.40	5.46	13.15	7.09	15.57	9.87
0501-B	6.98	1.00	9.21	1.48	11.43	2.29	10.14	1.81	12.77	2.84	16.51	4.81	19.71	6.80	22.93	9.07
0601-B	10.05	2.25	8.56	1.61	12.39	3.42	15.61	5.35	19.45	8.34	23.31	11.86	—	—	—	—
0401-C	7.56	0.66	11.28	0.85	15.01	1.11	18.37	1.56	21.72	2.18	20.63	2.00	24.58	2.80	30.13	4.20
0501-C	14.33	1.19	18.01	1.87	15.56	1.40	21.49	2.71	26.47	4.07	33.45	6.47	38.54	8.34	—	—
0602-C	16.72	1.09	14.59	0.95	20.46	1.51	27.67	2.79	34.89	4.46	40.91	6.00	48.10	8.22	—	—
0702-C	16.25	1.11	23.15	2.23	30.87	3.98	37.86	5.95	46.13	8.80	53.07	11.47	—	—	—	—
0503-D	14.99	0.63	20.64	0.74	27.03	0.92	31.93	1.07	29.92	1.00	39.18	1.49	48.56	2.29	57.92	3.26
0604-D	18.22	0.64	24.83	0.75	—	—	29.48	0.85	38.61	1.09	49.76	1.68	59.11	2.33	70.36	3.31
0702-D	22.70	1.04	34.48	2.15	45.28	3.69	56.13	5.65	66.89	7.92	79.57	11.23	—	—	—	—
0704-D	25.25	0.80	24.06	0.77	34.63	1.06	45.33	1.61	56.14	2.44	69.08	3.73	79.70	4.95	—	—
0804-D	24.62	0.82	36.74	1.22	48.95	2.14	61.16	3.32	73.28	4.77	—	—	—	—	—	—
0904-D	36.28	1.44	48.52	2.53	62.08	4.16	72.91	5.65	—	—	—	—	—	—	—	—
0804-E	39.83	1.01	56.42	1.70	75.17	2.98	93.95	4.62	112.46	6.61	—	—	—	—	—	—
0806-E	36.43	0.87	39.75	0.94	56.07	1.41	72.59	2.26	89.25	3.29	107.76	4.70	—	—	—	—
1004-F	67.67	1.39	84.97	2.18	100.11	2.96	117.18	4.07	—	—	—	—	—	—	—	—
1104-F	79.88	2.18	98.39	3.31	114.47	4.42	—	—	—	—	—	—	—	—	—	—
1004-G	83.36	1.25	102.73	1.86	124.9	2.75	144.23	3.62	—	—	—	—	—	—	—	—
1104-G	99.15	2.05	121.59	3.06	143.75	4.27	—	—	—	—	—	—	—	—	—	—
0903-H	93.49	1.10	118.77	1.76	144.20	2.57	169.48	3.53	191.66	4.44	216.73	5.67	—	—	—	—
1003-H	116.59	1.98	141.01	2.83	168.72	4.04	195.94	5.45	—	—	—	—	—	—	—	—
1206-H	127.58	1.09	155.58	1.59	183.35	2.19	—	—	—	—	—	—	—	—	—	—
1003-J	145.01	1.76	179.78	2.68	214.32	3.78	244.50	4.85	—	—	—	—	—	—	—	—
1104-J	164.53	1.61	202.03	2.41	234.87	3.20	—	—	—	—	—	—	—	—	—	—
1204-J	186.76	2.44	226.80	3.60	—	—	—	—	—	—	—	—	—	—	—	—

LEGEND

Cap.	—	Capacity (Tons)
EFT	—	Entering Fluid Temperature
LFT	—	Leaving Fluid Temperature
PD	—	Pressure Drop (PSIG)
SST	—	Refrigerant Saturated Suction Temperature

NOTES:

1. Ratings based on 35 F saturated suction temperature. Fouling factor is 0.0001.
2. Shaded selections are 2-pass. All other selections are 4-pass.
3. LTD = LFT - SST
4. Range = EFT - LFT

Compressors, Chillers & Condensers

10RT SERIES DX COOLERS

TOTALINE CONDENSER UNIT	FRONT CONDENSER HEAD	REAR CONDENSER HEAD	GASKET
10RT0401-A-147--AB	HEAD0026223	HEAD0026216	GASKE010180
10RT0501-A-147--AB	HEAD0026223	HEAD0026216	GASKE010180
10RT0501-B-147--AB	HEAD0026111	HEAD0026135	GASKE010254
10RT0401-C-247--AB	HEAD0025732	HEAD0025651	GASKE010247
10RT0501-C-247--AB	HEAD0025732	HEAD0025651	GASKE010247
10RT0602-C-227--AB	HEAD0025763	HEAD0025787	GASKE010247
10RT0702-C-227--AB	HEAD0025763	HEAD0025787	GASKE010247
10RT0704-D-227--AB	HEAD0025594	HEAD0025363	GASKE010216
10RT0804-D-227--AB	HEAD0025594	HEAD0025363	GASKE010216
10RT0904-D-227--AB	HEAD0025594	HEAD0025363	GASKE010216
10RT0804-E-227--AB	HEAD0026142	HEAD0026166	GASKE010209
10RT1004-F-227--AB	HEAD0026366	HEAD0026373	GASKE010223
10RT0601-B-147--AB	HEAD0026111	HEAD0026135	GASKE010254
10RT0503-D-247--AB	HEAD0010423	HEAD0025363	GASKE010216
10RT0604-D-247--AB	HEAD0010423	HEAD0025363	GASKE010216
10RT0702-D-227--AB	HEAD0025594	HEAD0025363	GASKE010216
10RT0806-E-227--AB	HEAD0026142	HEAD0026166	GASKE010209
10RT1104-F-227--AB	HEAD0026366	HEAD0026373	GASKE010223
10RT1004-G-227--AB	HEAD0026492	HEAD0026511	GASKE016245
10RT1104-G-227--AB	HEAD0026492	HEAD0026511	GASKE016245
10RT0903-H-227--AB	HEAD0026528	HEAD0026454	GASKE016340
10RT1003-H-227--AB	HEAD0026528	HEAD0026454	GASKE016340
10RT1205-H-227--AB	HEAD0026528	HEAD0026454	GASKE016340
10RT1003-J-227--AB	HEAD0011183	HEAD0021873	GASKE016238
10RT1104-J-227--AB	HEAD0011183	HEAD0021873	GASKE016238
10RT1204-J-227--AB	HEAD0011183	HEAD0021873	GASKE016238
10RT0902-L-227--AB	HEAD0020906	COVER005369	GASKE015473
10RT1002-L-227--AB	HEAD0026430	HEAD0026454	GASKE009930
10RT1103-L-227--AB	HEAD0026430	HEAD0026454	GASKE009930
10RT1203-L-227--AB	HEAD0026430	HEAD0026454	GASKE009930

Compressors,
Chillers, Condensers

Motors

Electrical

Heating
Components

Indoor Air
Quality

Thermostats

Oils &
Chemicals

Accessories, Supplies
& Commodities

Tools &
Instruments

Refrigeration