

## EMERSON CLIMATE TECHNOLOGIES-System Protectors HMI-Hermetic Moisture Indicators

The HMI is designed to provide an accurate method of determining the moisture content of a system's refrigerant. The HMI has a unique high accuracy moisture indicator for CFC, HCFC, and HFC refrigerants.



### Features

- Highest sensitivity moisture indicator available
- Hermetic, leak-free construction
- Single indicator for all common refrigerants
- Accurate color calibration at low ppm levels and higher temperatures
- Wide angle viewing/high visibility window for ease of monitoring
- All brass corrosion resistant body for fewer leaks
- Solid copper connections

**Nomenclature** example: HMI 1TT4

HMI	1	TT	4
Hermetic Moisture Indicator	Series	Connection Style TT = Sweat x Sweat	Connection Size (in 1/8")

### Specifications

- Maximum working pressure: 680 psig
- UL/CUL file number: SA 4876

### Ordering Information

PCN	Series	Connection Size	Description
065391	Male Flare x Male Flare	1/4	HMI-1MM2
065392	Male Flare x Male Flare	3/8	HMI-1MM3
065393	Male Flare x Male Flare	1/2	HMI-1MM4
065394	Male Flare x Male Flare	5/8	HMI-1MM5
065395	Male Flare x Male Flare	3/4	HMI-1MM6
065405	Sweat x Sweat (ODF)	1/4	HMI1-1TT2
065406	Sweat x Sweat (ODF)	3/8	HMI1-1TT3
065407	Sweat x Sweat (ODF)	1/2	HMI1-1TT4
065408	Sweat x Sweat (ODF)	5/8	HMI1-1TT5
065409	Sweat x Sweat (ODF)	3/4	HMI1-1TT6
065410	Sweat x Sweat (ODF)	7/8	HMI1-1TT7
065411	Sweat x Sweat (ODF)	1 1/8	HMI1-1TT9
065396	Female Flare x Male Flare	1/4	HMI-1FM2
065397	Female Flare x Male Flare	3/8	HMI-1FM3
065398	Female Flare x Male Flare	1/2	HMI-1FM4
065622	Sweat x Sweat (ODM x ODF)	1/4	HMI-1TT2MF
065814	Sweat x Sweat (ODM x ODF)	3/8	HMI-1TT3MF
065979	Sweat x Sweat (ODM x ODF)	1/2	HMI-1TT4MF
065980	Sweat x Sweat (ODM x ODF)	5/8	HMI-1TT5MF

### Moisture Content Color Code (ppm H<sub>2</sub>O)

Indication Liquid Temperature	Dry (Dark Blue)			Caution (Purple)			Wet (Salmon)		
	75°F	100°F	125°F	75°F	100°F	125°F	75°F	100°F	125°F
R-12	1.4	2.5	4	5	9	15	25	43	70
R-134A	20	35	60	35	55	85	130	160	190
R-22	25	35	50	40	65	90	145	205	290
R-407C	26	40	64	42	68	109	150	230	370
R-410A	30	55	75	50	85	120	165	290	420
R-404A/507	15	25	45	33	50	80	120	150	180

## EMERSON CLIMATE TECHNOLOGIES-System Protectors HMI-Hermetic Moisture Indicators

The HMI is designed to provide an accurate method of determining the moisture content of a system's refrigerant. The HMI has a unique high accuracy moisture indicator for CFC, HCFC, and HFC refrigerants.



### Features

- Highest sensitivity moisture indicator available
- Hermetic, leak-free construction
- Single indicator for all common refrigerants
- Accurate color calibration at low ppm levels and higher temperatures
- Wide angle viewing/high visibility window for ease of monitoring
- All brass corrosion resistant body for fewer leaks
- Solid copper connections

**Nomenclature** example: HMI 1TT4

HMI	1	TT	4
Hermetic Moisture Indicator	Series	Connection Style TT = Sweat x Sweat	Connection Size (in 1/8")

### Specifications

- Maximum working pressure: 680 psig
- UL/CUL file number: SA 4876

### Ordering Information

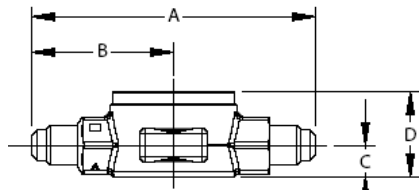
PCN	Series	Connection Size	Description
065391	Male Flare x Male Flare	1/4	HMI-1MM2
065392	Male Flare x Male Flare	3/8	HMI-1MM3
065393	Male Flare x Male Flare	1/2	HMI-1MM4
065394	Male Flare x Male Flare	5/8	HMI-1MM5
065395	Male Flare x Male Flare	3/4	HMI-1MM6
065405	Sweat x Sweat (ODF)	1/4	HMI1-1TT2
065406	Sweat x Sweat (ODF)	3/8	HMI1-1TT3
065407	Sweat x Sweat (ODF)	1/2	HMI1-1TT4
065408	Sweat x Sweat (ODF)	5/8	HMI1-1TT5
065409	Sweat x Sweat (ODF)	3/4	HMI1-1TT6
065410	Sweat x Sweat (ODF)	7/8	HMI1-1TT7
065411	Sweat x Sweat (ODF)	1 1/8	HMI1-1TT9
065396	Female Flare x Male Flare	1/4	HMI-1FM2
065397	Female Flare x Male Flare	3/8	HMI-1FM3
065398	Female Flare x Male Flare	1/2	HMI-1FM4
065622	Sweat x Sweat (ODM x ODF)	1/4	HMI-1TT2MF
065814	Sweat x Sweat (ODM x ODF)	3/8	HMI-1TT3MF
065979	Sweat x Sweat (ODM x ODF)	1/2	HMI-1TT4MF
065980	Sweat x Sweat (ODM x ODF)	5/8	HMI-1TT5MF

### Moisture Content Color Code (ppm H<sub>2</sub>O)

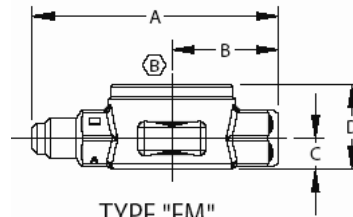
Indication Liquid Temperature	Dry (Dark Blue)			Caution (Purple)			Wet (Salmon)		
	75°F	100°F	125°F	75°F	100°F	125°F	75°F	100°F	125°F
R-12	1.4	2.5	4	5	9	15	25	43	70
R-134A	20	35	60	35	55	85	130	160	190
R-22	25	35	50	40	65	90	145	205	290
R-407C	26	40	64	42	68	109	150	230	370
R-410A	30	55	75	50	85	120	165	290	420
R-404A/507	15	25	45	33	50	80	120	150	180

## EMERSON CLIMATE TECHNOLOGIES-System Protectors HMI-Hermetic Moisture Indicators

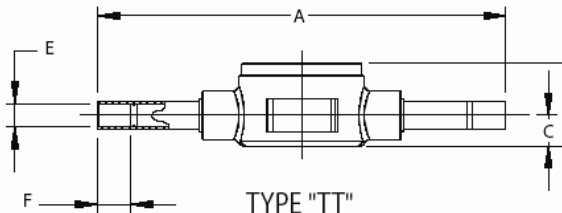
### Dimensional Data



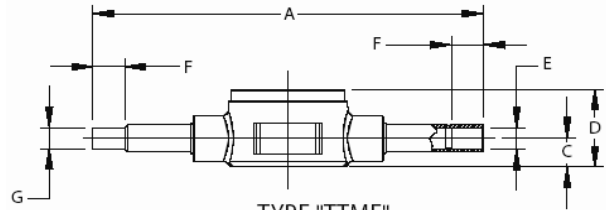
TYPE "MM"  
MALE FLARE X MALE FLARE



TYPE "FM"  
FEMALE FLARE X MALE FLARE



TYPE "TT"  
TUBE STUB X TUBE STUB



TYPE "TTMF"  
TUBE STUB MALE X TUBE STUB FEMALE

### Dimensional Data (in)

Type Number	Connection Size	A	B	C	D	E	F Min	G
HMI - 1MM2	1/4 SAE	3.13	1.56	0.34	0.94			
HMI - 1MM3	3/8 SAE	3.38	1.69	0.34	0.94			
HMI - 1MM4	1/2 SAE	3.62	1.81	0.47	1.19			
HMI - 1MM5	5/8 SAE	3.88	1.94	0.47	1.19			
HMI - 1MM6	3/4 SAE	5.00	2.50	0.59	1.53			
HMI - 1FM2	1/4 SAE FM	2.75	1.19	0.34	0.94			
HMI - 1FM3	3/8 SAE FM	3.00	1.31	0.47	1.19			
HMI - 1FM4	1/2 SAE FM	3.22	1.41	0.47	1.19			
HMI - 1TT2	1/4 ODF	5.56		0.34	0.94	0.25	0.38	
HMI - 1TT3	3/8 ODF	5.61		0.34	0.94	0.38	0.40	
HMI - 1TT4	1/2 ODF	5.87		0.47	1.19	0.50	0.50	
HMI - 1TT5	5/8 ODF	5.87		0.61	1.19	0.63	0.63	
HMI - 1TT6	3/4 ODF	6.56		0.61	1.50	0.75	0.63	
HMI - 1TT7	7/8 ODF	6.31		0.61	1.50	0.88	0.75	
HMI - 1TT9	1 1/8 ODF	6.59		0.67	1.37	1.13	0.90	
HMI - 1TT2MF	1/4 ODM x 1/4 ODF	5.56		0.34	0.94	0.25	0.38	0.25
HMI - 1TT3MF	3/8 ODM x 3/8 ODF	5.61		0.34	0.94	0.38	0.38	0.38
HMI - 1TT4MF	1/2 ODM x 1/2 ODF	5.87		0.47	1.19	0.50	0.50	0.50
HMI - 1TT5MF	5/8 ODM x 5/8 ODF	5.87		0.61	1.19	0.63	0.50	0.62

Compressors,  
Chillers, Condensers

Motors

Electrical

Heating  
Components

Indoor Air  
Quality

Thermostats

Oils &  
Chemicals

Accessories, Supplies  
& Commodities

Tools &  
Instruments

Refrigeration

## EMERSON CLIMATE TECHNOLOGIES-System Protectors AMI-Moisture Indicators

The AMI is designed to provide an accurate method of determining the moisture content of a system's refrigerant. The AMI has a unique high accuracy moisture indicator for CFC, HCFC and HFC refrigerants. For the AMI-2 Series, see the bottom of the following page.



### Features

- Highest sensitivity moisture indicator available
- Take-Apart design for easy repair
- Single indicator for all common refrigerants
- Accurate color calibration at low ppm levels and higher temperatures
- Wide angle viewing/high visibility window for ease of monitoring
- Solid copper connections

### Specifications

- Maximum working pressure: 650 psig
- UL/CUL file number: SA 4876

**Nomenclature example:** AMI 1SS4

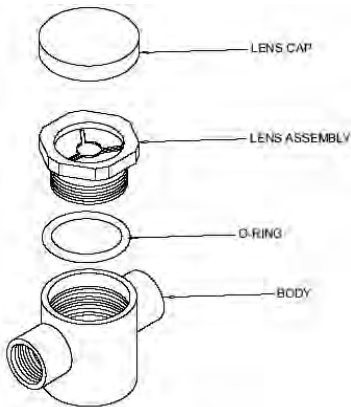
AMI	1	SS	4
Moisture Indicator Series	Design Series 1 = standard connection 2 = bushing style	Connection Style TT = Sweat x Sweat	Connection Size (in 1/8")

### Ordering Information

PCN	Series	Connection Size	Description
048803	Male Flare x Male Flare	1/4	AMI-1MM2
048804	Male Flare x Male Flare	3/8	AMI-1MM3
048805	Male Flare x Male Flare	1/2	AMI-1MM4
048806	Male Flare x Male Flare	5/8	AMI-1MM5
048811	Sweat x Sweat (OD Female)	1/4	AMI-1SS2
048812	Sweat x Sweat (OD Female)	3/8	AMI-1SS3
048813	Sweat x Sweat (OD Female)	1/2	AMI-1SS4
048814	Sweat x Sweat (OD Female)	5/8	AMI-1SS5
048815	Sweat x Sweat (OD Female)	7/8	AMI-1SS7
048816	Sweat x Sweat (OD Female)	1 1/8	AMI-1SS9
047298	Sweat x Sweat (OD Female)	1/4	AMI-1TT2 EXTENDED ENDS
042771	Sweat x Sweat (OD Female)	3/8	AMI-1TT3 EXTENDED ENDS
022302	Sweat x Sweat (OD Female)	1/2	AMI-1TT4 EXTENDED ENDS
031136	Sweat x Sweat (OD Female)	5/8	AMI-1TT5 EXTENDED ENDS
031357	Sweat x Sweat (OD Female)	7/8	AMI-1TT7 EXTENDED ENDS*
031578	Sweat x Sweat (OD Female)	1 1/8	AMI-1TT9 EXTENDED ENDS*
048800	Female Flare x Male Flare	1/4	AMI-1FM2
048801	Female Flare x Male Flare	3/8	AMI-1FM3
048802	Female Flare x Male Flare	1/2	AMI-1FM4

\*500 PSIG MWP

### Replacement Parts For AMI

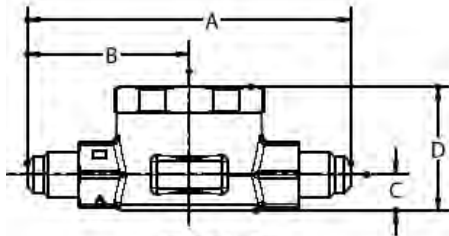


PCN	Part	Number
021371	Lenscap	12740-1
020877	"O" Ring	PS1525-2
027511	Lens Assembly Kit (Consists of lens assembly, lens cap and "O" ring)	X12978-1

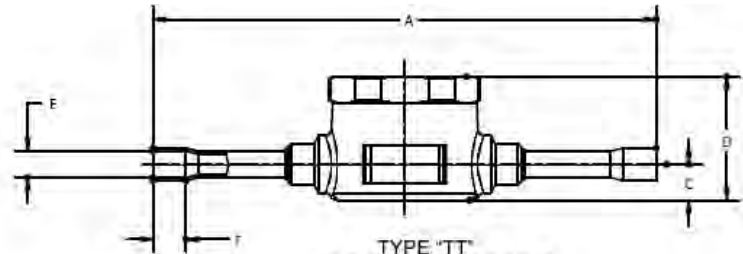
## EMERSON CLIMATE TECHNOLOGIES-System Protectors AMI-Moisture Indicators Moisture Content Color Code (ppm H<sub>2</sub>O)

Indication Liquid Temperature	Dry (Dark Blue)			Caution (Purple)			Wet (Salmon)		
	75°F	100°F	125°F	75°F	100°F	125°F	75°F	100°F	125°F
R-12	1.4	2.5	4	5	9	15	25	43	70
R-134A	20	35	60	35	55	85	130	160	190
R-22	25	35	50	40	65	90	145	205	290
R-407C	26	40	64	42	68	109	150	230	370
R-410A	30	55	75	50	85	120	165	290	420
R-404A/507	15	25	45	33	50	80	120	150	180

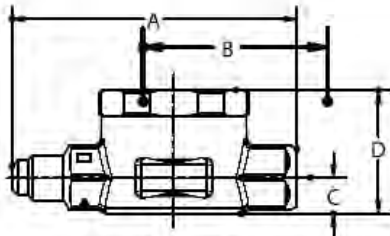
### Dimensional Data



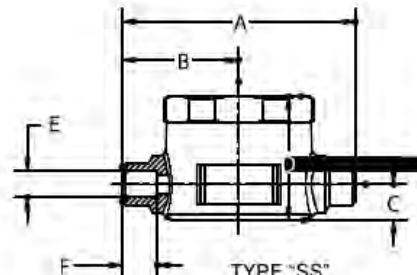
TYPE "MM"  
MALE FLARE X MALE FLARE



TYPE "TT"  
TUBE STUB X TUBE STUB



TYPE "FM"  
FEMALE FLARE X FEMALE FLARE



TYPE "SS"  
SWEAT X SWEAT

Type Number	Connection Size	A	B	C	D	E	F Min	G
HMI - 1MM2	1/4 SAE	3.13	1.56	0.34	0.94			
HMI - 1MM3	3/8 SAE	3.38	1.69	0.34	0.94			
HMI - 1MM4	1/2 SAE	3.62	1.81	0.47	1.19			
HMI - 1MM5	5/8 SAE	3.88	1.94	0.47	1.19			
HMI - 1MM6	3/4 SAE	5.00	2.50	0.59	1.53			
HMI - 1FM2	1/4 SAE FM	2.75	1.19	0.34	0.94			
HMI - 1FM3	3/8 SAE FM	3.00	1.31	0.47	1.19			
HMI - 1FM4	1/2 SAE FM	3.22	1.41	0.47	1.19			
HMI - 1TT2	1/4 ODF	5.56		0.34	0.94	0.25	0.38	
HMI - 1TT3	3/8 ODF	5.61		0.34	0.94	0.38	0.40	
HMI - 1TT4	1/2 ODF	5.87		0.47	1.19	0.50	0.50	
HMI - 1TT5	5/8 ODF	5.87		0.61	1.19	0.63	0.63	
HMI - 1TT6	3/4 ODF	6.56		0.61	1.50	0.75	0.63	
HMI - 1TT7	7/8 ODF	6.31		0.61	1.50	0.88	0.75	
HMI - 1TT9	1 1/8 ODF	6.59		0.67	1.37	1.13	0.90	
HMI - 1TT2MF	1/4 ODM x 1/4 ODF	5.56		0.34	0.94	0.25	0.38	0.25
HMI - 1TT3MF	3/8 ODM x 3/8 ODF	5.61		0.34	0.94	0.38	0.38	0.38
HMI - 1TT4MF	1/2 ODM x 1/2 ODF	5.87		0.47	1.19	0.50	0.50	0.50
HMI - 1 TT5MF	5/8 ODM x 5/8 ODF	5.87		0.61	1.19	0.63	0.50	0.62

Compressors,  
Chillers, Condensers

Motors

Electrical

Heating  
Components

Indoor Air  
Quality

Thermostats

Oils &  
Chemicals

Accessories, Supplies  
& Commodities

Tools &  
Instruments

Refrigeration

## EMERSON CLIMATE TECHNOLOGIES-System Protectors AMI-Moisture Indicators

### AMI-2 Series Dimensions (in)

PCN	Connection Size	A Dia.	B	C	Description
064857	5/8 ODM	0.63	1.40	1.17	AMI-2S5
064167	7/8 ODM	0.88	1.34	1.00	AMI-2S7
064168	1 1/8 ODM	1.13	1.25	1.00	AMI-2S9
022303	1 3/8 ODM	1.38	1.56	1.94	AMI-2S11
028388	1 5/8 ODM	1.63	1.69	1.44	AMI-2S13
031219	2 1/8 ODM	2.13	1.94	1.69	AMI-2S17

