

## EMERSON CLIMATE TECHNOLOGIES-Temperature Pressure Controls TS1 Series Single Control

The TS1 series adjustable thermostats are designed for application in refrigeration and heat pump systems. In these systems, thermostats serve control and monitoring functions, such as space temperature control, high/low temperature alarming or defrost termination. By operating a set of electrical contacts, a temperature value is kept inside a certain limit.



Several housing variants and sensors are provided in order to suit a control to a specific application.

### Features

- Adjustable temperature and differentials
- Range and differential individually lockable by wire seal
- Captive terminal and cover screws
- Manual toggle for system checkout and override
- Bellows heater for thermostats with vapour charge
- Room thermostats with insulation console
- Standard accessories include mounting brackets and knob with lockplate on all individually packed controls
- Non-ambient sensitive
- Heavy-duty SPDT switch allows handling of most loads directly without the use of relays

### Specifications

- Ambient temperature ranges -50°C to +70°C (-58°F to +158°F)
- SPDT switch rated for 120 VAC/240VAC at 24FLA and 144 LRA
- Agency approvals include: UL/CUL file number E85974, VDE 0631/0660, TÜV, CE 73/23/EWG, CE 93/68/EWG

### Options

- Vapor, liquid and cross-ambient charges
- Sensor shape for various applications
- Factory set to customer specification
- Different types of mounting brackets
- Sensor bulb wells and capillary tube holders
- Special approvals
- Range and differential pointer in units °C and °F

**Nomenclature** example: TS1 B1E

TS1	B	1	E
<b>Product Name</b>	<b>Housing Variant/function</b>	<b>Temperature Range</b>	<b>Sensor Type</b>
TS1 = <b>Adjustable thermostat</b> TSA = <b>Customer specials</b>	A = Wall mount design, top adjustment B = Wall mount design, top adjustment, off-switch C = Frost monitor, auto reset D = Frost monitor, manual reset X = Wall mount design, top adjustment,	0 = +40 to +68°F (+4.5 to +20°C) 1 = -50 to +14°F (-45 to -10°C) 2 = -22 to +50°F (-30 to +10°C) 3 = +14 to +77°F (-10 to +25°C) 4 = -13 to +86°F (-25 to +30°C) 5 = +68 to +140°F (+20 to +60°C) 6 = +122 to +212°F (+50 to +100°C) NOTES Temp ranges 0-4: manual reset for falling temperature Temp ranges 5 and 6: manual reset for rising temperature.	A = Vapor Charge, 2 m. capillary C = Liquid Charge, 2 m. bulb E = Vapor Charge, 0 m. coil F = Adsorption Charge, 2 m. bulb P = Vapor Charge, 2 m. capillary for housing variant AB. 6 m. capillary for housing variant C/D/X

### Ordering Information

#### Top Operated Thermostats Without Off-Switch (Capillary Type Sensor)

Type	PCN	Adjustment Range			Temperature Sensor	
		Upper Setpoint °F (°C)	Different Setpoint °F (°K)	Factory Setting °F (°C)	Charge	Type
TS1-X2A	097926	-22 TO 59 (-30...+15)	3 TO 29 (2 TO 16)	30/21 (-1/-6)	VAPOR	6 FT. (2 m.) capillary
TS1-X4F	097929	-22 TO 95 (-30...+35)	5 TO 36 (3...20)	41/32 (+5/0)	ADSORPTION	6 FT. (2 m.) cap. & bulb

#### Room Thermostats Top Operated Without Off-Switch (Includes Insulation Console and Coil Type Sensor)

Type	PCN	Adjustment Range			Temperature Sensor	
		Upper Setpoint °F (°C)	Different Setpoint °F (°K)	Factory Setting °F (°C)	Charge	Type
TS1-X2E	097932	-22 TO 59 (-30...+15)	3 TO 29 (2 to 16)	39/35 (+4/+2)	VAPOR	Coil
TS1-X3E	097935	14 TO 95 (-10...+35)	3 TO 29 (2 TO 16)	68/64 (+20/+18)	VAPOR	Coil

#### Freeze-Stat, Top Operated Without Off-Switch (Capillary Type Sensor)

Type	PCN	Upper Setpoint °F (°C)	Different Setpoint °F (°K)	Factory Setting °F (°C)	Charge	Type
TS1-C0P	097882	40 TO 68 (+4.5...+20)	5 (3) fi x	40/36 (4.5/+2)	VAPOR	20 FT. (6 m.) capillary
TS1-D0P	097885	40 TO 68 (+4.5...+20)	man. reset ca. 5 (3) fi x	36 (+2)	VAPOR	20 FT. (6 m.) capillary



## EMERSON CLIMATE TECHNOLOGIES-Temperature Pressure Controls PS1 Series Single Control

PS1 Single Pressure Controls are designed for use on high and low pressure applications in refrigeration and heat pump systems. By operating a set of electrical contacts, pressure is kept inside a certain limit.

### Features

- Adjustable pressures and differentials
- Narrow adjustable differential depending on model
- Range and differential pointer in units bar and psig
- Range and differential individually lockable by wire seal
- High rated SPDT contacts for all versions
- Captive terminal and cover screws
- Manual toggle for system checkout and override
- Factory installed wire bridge for reduced installation effort

### Options

- Different pressure connections
- Automatic and manual reset versions
- Factory set to customer specification
- Different types of mounting brackets

### Specifications

- SPDT switch rated for 120 VAC/240VAC at 24FLA and 144 LRA
- Agency approvals include: UL/CUL file number E85974, VDE 0631/0660, TÜV, CE 73/23/EWG, CE 93/68/EWG
- Low and high pressure versions available with TÜV approval according to EN 12263 (supercedes DIN 32733) to meet requirements of DIN 8901 and EN378 (supercedes DIN 8975)



**Nomenclature** example: PS1-A5K

PS1	A	5	K
<b>Product Name</b> PS1 = Adjustable single Pressure Control PSA = Customer specials	<b>Housing Variant/function</b> A = Pressure control, automatic reset, internal range & differential adjustments W = Pressure control, automatic reset, DIN/TUV approved, internal range and differential adjustments X = Pressure control, automatic reset, external range and differential adjustments	<b>Pressure Range</b> 1 = 24" Hg to 42 psig (-0.75 to 3 bar) 3 = 15" Hg to 100 psig (-0.5 to 7 bar) 4 = 15 to 290 psig (1 to 20 bar) 5 = 90 to 450 psig (6 to 31 bar)	<b>Sensor Type</b> A = 7/16" - 20 UNF male for 1/4" SAE male fl are K* = 7/16" - 20 UNF fl are nut with 1 meter (3 ft.) cap tube  *Controls with housing variant X have extended copper ends, without Schrader valve depressor. All other housing variants have Schrader valve depressor and brass end fitting with copper gasket.

### Ordering Information

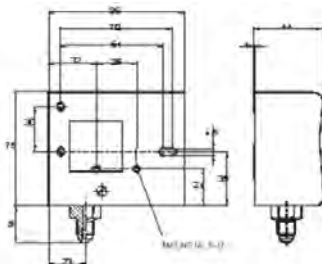
#### Low Pressure Controls

Single Pressure Control	PCN	Adjustment Range		Factory Setting (psig)	Pressure Connection
		Upper Setpoint (psig)	Different Setpoint (psig)		
PS1-X1K	097898	24" Hg to 42 psig	4 to 29	7/15	Capillary Nut
PS1-X1A	097894	24" Hg to 42 psig	4 to 29	7/15	7/16" -20 UNF, 1/4" SAE male
PS1-X3A	097914	15" Hg to 100 psig	7 to 73	50/65	7/16" -20 UNF, 1/4" SAE male
PS1-X3K	097904	15" Hg to 100 psig	7 to 73	50/65	Capillary Nut

#### High Pressure Controls

Single Pressure Control	PCN	Upper Setpoint (psig)	Different Setpoint (psig)	Factory Setting (psig)	Pressure Connection
PS1-X4K	097901	15" Hg to 290 psig	15 to 100	145/115	Capillary Nut
PS1-X5K	097908	90" Hg to 450 psig	29 to 217	230/290	Capillary Nut
PS1-Y5A	097923	90" Hg to 450 psig	Ext. Manual Reset	50	7/16" -20 UNF, 1/4" SAE male
PS1-Y5K	097911	90" Hg to 450 psig	Ext. Manual Reset	50	Capillary Nut

### Dimensional Diagram (in)



## EMERSON CLIMATE TECHNOLOGIES-Temperature Pressure Controls PS2 Series Dual Control

PS2 Dual Pressure Controls are designed for use on high and low pressure applications in refrigeration and heat pump systems. By operating a set of electrical contacts, pressure is kept inside certain limits.



### Features

- Adjustable pressures and differentials
- Narrow adjustable differential depending on model
- Range and differential pointer in units bar and psig
- Range and differential individually lockable by wire seal
- High rated SPDT contacts for all versions
- Captive terminal and cover screws
- Manual toggle for system checkout and override
- Factory installed wire bridge for reduced installation effort

### Options

- Different pressure connections
- Automatic and manual reset versions
- Factory set to customer specification
- Different types of mounting brackets

### Specifications

- SPDT switch rated for 120 VAC/240VAC at 24FLA and 144 LRA
- Agency approvals include: UL/CUL file number E85974, VDE 0631/0660, TÜV, CE 73/23/EWG, CE 93/68/EWG
- Low and high pressure versions available with TUV approval according to DIN 32733 to meet requirements of DIN 8901 and DIN 8975

**Nomenclature** example: PS2-Y7A

PS2	Y	7	A
<b>Product Name</b>	<b>Function</b>	<b>Pressure Ranges</b>	<b>Pressure Connector Type</b>
<b>PS2 = Adjustable Dual Pressostat</b>	A = Both sides: Pressure controls, Automatic reset, Internal range and differential adjustments. L = Left side: Pressure control, Automatic reset, Internal range and differential adjustments. Right side: Pressure cut out, External manual reset, Internal range and differential adjustments.	7 = Left side: 15" Hg to 100 psig (-0.5 to 7 bar) Right side: 90 to 450 psig (6 to 31 bar)	A = 7/16" -20 UNF male for 1/4" SAE flare fitting K* = 7/16" -20 UNF flare nut with 1 meter (3 ft.) cap tube L = 1/4" ODM solder with 1 meter (3 ft.) cap tube
<b>PSB = Customer special Version</b>	X = Both sides: Pressure controls, Automatic reset, External range and differential adjustments. Y = Left side: Pressure control, Automatic reset, External range and differential adjustments.	9 = Left side: 24" Hg to 45 psig (-.75 to 3 bar) Right side: 90 to 450 psig (6 to 31 bar)	* Controls with housing variants X/Y have extended copper ends, without Schrader valve depressor. All other housing variants have Schrader valve depressors and brass end fitting with copper gasket
	LOW PRESSURE MANUAL RESET: Cut outs with manual reset function and in combination with the low pressure side of Pressure Ranges 7 & 9 have a low pressure manual reset function (15 psig differential). HIGH PRESSURE MANUAL RESET: Cut outs with manual reset function and in combination with the high pressure side of Pressure Ranges 7 & 9 have a high pressure manual reset function (60 psig differential).		

### Ordering Information

#### Continued Pressure Limiter/Pressure Cut Out for Low Pressure/High Pressure Protect

Dual Pressure Control	PCN	Adjustment Range			Factory Setting PSIG		Pressure Connection	
		Upper Setpoint Left psig	Upper Setpoint Right (psig)	Different Setpoint Left psig	Different Setpoint Right (psig)	Left psig		Right (psig)
PS2-Y7A	097954	15" Hg to 100	90 to 450	7 to 72	Convertible Auto/Manual Reset	50/65	290	7/16" -20 UNF
PS2-Y7K	097943	15" Hg to 100	90 to 450	7 to 72	Convertible Auto/Manual Reset	50/65	290	Capillary Nut
PS2-Y9K	097950	24" Hg to 45	90 to 450	4 to 29	Convertible Auto/Manual Reset	7/15	290	Capillary Nut

## EMERSON CLIMATE TECHNOLOGIES-Temperature Pressure Controls FD113-ZUK Oil Pressure Safety

The FD113 Oil Pressure Safety Control senses the effective oil pressure on pressure lubricate compressors. If inadequate oil pressure exists, a time delay is energized. If the oil pressure does not recover to safe levels within the time delay setting, the compressor is shut down. The time delay allows the compressor adequate time to establish oil pressure on start up and avoids nuisance shutdowns on pressure drop of short duration during the run cycle.



Maximum application flexibility is assured by providing an adjustable differential pressure switch which can be adjusted to the compressor's minimum required oil pressure needs and an adjustable electronic time delay which allows the selection of the length of time the compressor runs below the minimum pressure before shutdown. The minimum pressure setting and time delay values specified by the compressor manufacturer should be used when installing the FD113 control.

### Features

- Pressure range adjustable from 4 to 65 psid; Timer start pressure - timer stop pressure is 3 psid above timer start pressure
- A SPDT switch is used in the pressure portion of the control which allows the addition of a "safe-light" when desired
- Electronic Timer is Time-Adjustable from 20 to 150 seconds Supply voltage - 24 to 240 Volt AC/DC; Timing unaffected by voltage or ambient temperature variations
- A SPDT Manual Reset Switch is used in the Timer Module; Upon time-out, the compressor is stopped and an alarm circuit is energized; To restart the compressor and deenergize the alarm circuit, the reset button is pushed
- A factory installed Jumper allows the FD113 to be powered from a single source power; Should separate circuits be desired for the timer and "Lockout" switch, the Jumper can be removed

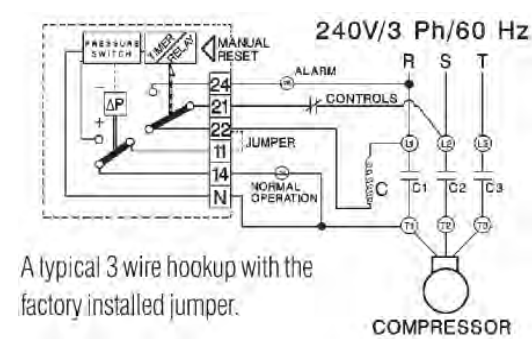
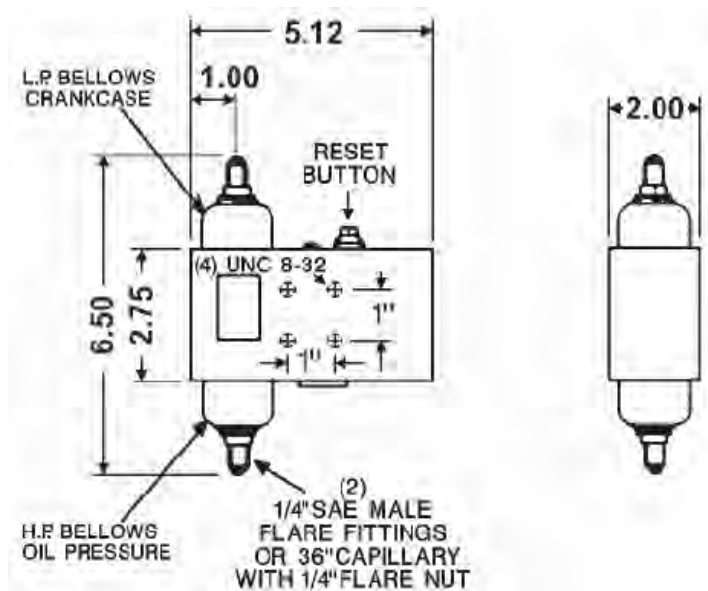
### Specifications

- Agency approvals include: UL/CUL file number E85974, VDE 0631/0660, TÜV, CE 73/23/EWG, CE 93/68/EWG

### Ordering Information

PCN	Part Number	Adjustable Pressure Range	Adjustable Time Delay	Supply Voltage	Pressure Connection
097456	FD113-ZUK	4-65 psid	20 to 150 seconds Factory-set at 120 seconds	24 to 240V AC/DC	(2) 36" capillary with 1/4" flare nu

### Dimensional Data (in)



A typical 3 wire hookup with the factory installed jumper.

## EMERSON CLIMATE TECHNOLOGIES-Temperature Pressure Controls PSC Mini Pressure Control

The PSC Mini Pressure Control provides the ultimate in reliability and flexibility in a commercial grade mini pressure control. A standard plug connectable design simplifies installation and service. The SPDT switch allows the addition of alarm circuits on high or low pressure applications. Models with high temperature bellows and built-in pressure pulsation snubbers make the PSC ideally suited for compressor head mounting high pressure limit control applications—automatic or manual reset versions are available.

Pressure Ranges/Differential also make the PSC controls ideally suited for condenser fan cycling applications. Low Pressure versions with standard or narrow differential switches make these controls ideally suited low pressure limit or back-up safety controls on electronically controlled systems. Numerous options, such as panel mount or capillary connections are available on high volume applications. Standard on all models are worldwide agency approvals.

### Typical Applications

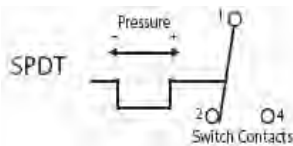
- High Pressure Limit/Alarm
- Condenser Fan Cycling
- Low Pressure Limit/Alarm
- Low Pressure Cycling (Back-Up)
- Defrost Termination/Fan Delay
- Rupture Guard Alarm

### Features

- Commercial Grade High/Low/Condenser Fan Cycling Pressure Controls for use on Refrigeration/AC Applications
- Mini-Size 2" x 1-1/2" x 2-3/4"
- Standard SPDT Switch Action
- Automatic or Manual Reset
- Models available with high temperature bellows and built-in pressure pulsation snubber for direct head mount high pressure sensing/limit applications
- Plug Connectable with hub for 1/2" flexible conduit
- Factory preset to customer's desired pressure specifications
- Precise, repeatable settings
- Narrow differential "Micro" switch available on low pressure models

### Switch Action

- SPDT Standard
- 1-2 Open on R  
Close on F
- 1-4 Close on R  
Open on F...



### Specifications

- Worldwide Approvals: UL/CUL/VDE/TÜV
- UL/CUL file number: E85974

### Electrical Ratings—SPDT Switch

- Standard Switch – High/Low Pressure
  - Load Contact: 6 FLA – 36 LRA – 120/240 VAC
  - Pilot Duty: 240VA @ 120, 480VA @ 240 VAC
  - Back Contact 0.5 Amp 120/240 VAC Pilot Duty
- Micro Switch – Low Pressure
  - 2.5 FLA – 15 LRA – 120/240 VAC
  - Pilot Duty: 120VA @ 120, 240VA @ 240 VAC
  - Back Contact 0.5 Amp 120/240 VAC Pilot Duty
- **Ambient Temperature**
  - Storage: –30° to +160°F Operating: –20° to +140°F
- Low Pressure
  - Single diaphragm
  - Maximum media temperature 150°F
- High Pressure
  - Bellows design
  - Maximum media temperature 300°F
  - Internal Pressure Pulsation Snubber available for direct head mount

### Protection

- Protect from rain, direct sunlight and exterior damage

### Weight

- Approximately 0.25 pound, depending upon configuration

### Compatibility

- HFC, HCFC, CFC

### Agency Approvals

- UL/CUL/DIN/TÜV, depending upon configuration

### Nomenclature example: PSC-W6S

PSC	W	6	S
<b>Product Name</b>	<b>Function</b>	<b>Pressure Range/Contacts</b>	<b>Pressure Connections</b>
	<p>A = <b>Pressure control, automatic</b>, high or low pressure applications (Single diaphragm option, 158° F rating, Range 1-5 only, without snubber) (Bellows option, 300° F rating, with snubber, Range 6 only)</p> <p>B = <b>Pressure cut-out, external manual reset</b>, DIN/TUV approved (Double diaphragm option, 158° F, without snubber, Range 1-5) (Bellows option, 300° F rating, with snubber, Range 6 only)</p> <p>R = <b>Pressure control, external manual reset</b>, high or low pressure applications (Single diaphragm option, 158° F rating, Range 1-5 only, without snubber) (Bellows option, 300° F rating, with snubber, Range 6 only)</p> <p>W = <b>Pressure limiter, automatic</b>, DIN/TUV approved (Double diaphragm option, 158° F, without snubber, Range 1-5) (Bellows option, 300° F rating, with snubber, Range 6 only)</p>	<p>Standard Contacts</p> <p>1 = Low pressure 15" Hg to 90 psig</p> <p>5 = High pressure 100 to 465 psig</p> <p>6 = High pressure 145 to 623 psig</p> <p>Microswitch Contacts</p> <p>J = Low pressure 15" Hg to 90 psig</p>	<p>K = 1 m cap tube w/fl are nut 7/16"-20 UNF (range 1-5)</p> <p>L = 1/4" ODM solder w/1 m cap tube (range 1-5)</p> <p>S = 7/16"-20 UNF female, Schrader depressor (range 1-6)</p>

## EMERSON CLIMATE TECHNOLOGIES-Temperature Pressure Controls PSC Mini Pressure Control Specification Selection Table

### Low Pressure Controls

PCN	Type and Description	High Event Range (PSIG)	Differential Range (PSID)	Setting	Reset Function	Pressure Connection	Electrical Connetion	Electrical Ratings	Maximum Over Pressure	Mounting
097815		15" to 90	4 Low / 7 High	1.5/6	Auto	1/4" SAE Female with Valve Depressor	DIN Plug with 1/2" NPTF Hub for Flex Conduit Connection 36" Cable	2.5 FLA/15 LRA	360 PSIG	Free Standing Direct Mount
097849	PSC-A1S	15" to 90	9 Low / 15 High	5/15	Auto	1/4" SAE Female with Valve Depressor	DIN Plug with 1/2" NPTF Hub for Flex Conduit Connection 36" Cable	6 FLA/36 LRA	360 PSIG	Free Standing Direct Mount

### High Pressure Contols

PCN	Type and Description	High Event Range (PSIG)	Differential Range (PSID)	Setting	Reset Function	Pressure Connection	Electrical Connetion	Electrical Ratings	Maximum Over Pressure	Mounting
097793	PSC-W6S	145 to 623	72 Low / 87 High	320/395	Auto	1/4" SAE Female with Valve Depressor, plus stainless steel bellows with snubber	DIN Plug with 1/2" NPTF Hub for Flex Conduit Connection 36" Cable	6 FLA/36 LRA	695 PSIG	Free Standing Direct Mount
097998	PSC-B6S	145 to 623	72 Low / 87 High	395	Manual	1/4" SAE Female with Valve Depressor, plus stainless steel bellows with snubber	DIN Plug with 1/2" NPTF Hub for Flex Conduit Connection 36" Cable	6 FLA/36 LRA	695 PSIG	Free Standing Direct Mount

<sup>1</sup> Micro-Switch Construction.

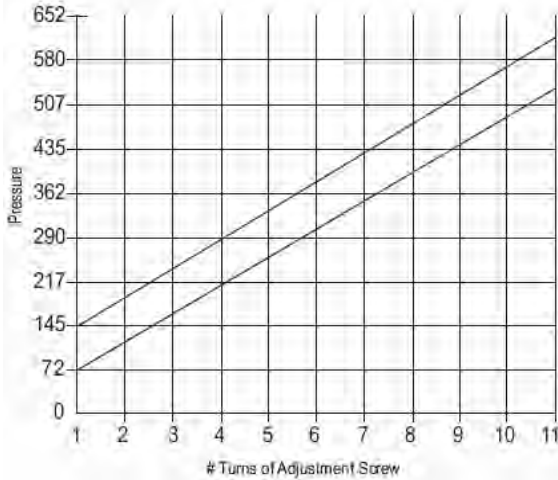
<sup>2</sup> All switches SPDT ratings stated are 1 side only 120/240 VAC. Opposite switch side – 1/2 amp pilot duty 120/240.

## EMERSON CLIMATE TECHNOLOGIES-Temperature Pressure Controls PSC Setting Capabilities

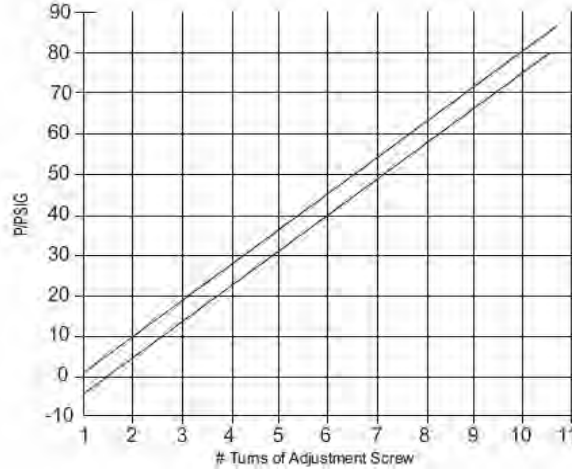
The PSC is factory preset.

For special applications, these controls can be factory preset to other values as illustrated on the appropriate graphs.

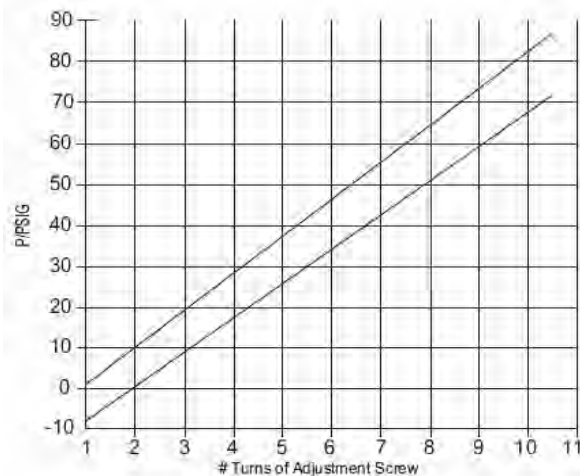
**Standard Switch Setting Capability  
Pressure Range = 6**



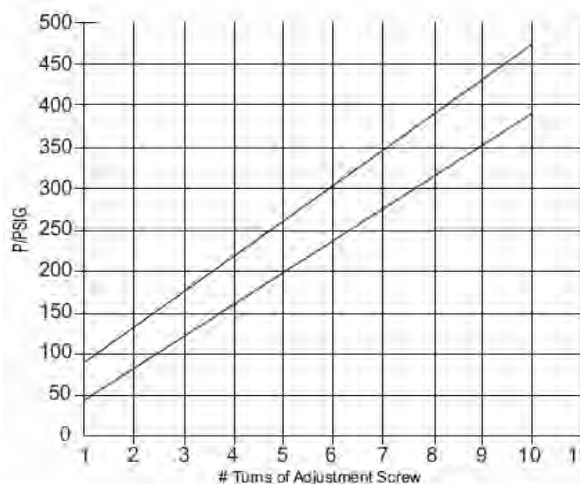
**Micro-Switch Setting Capability  
Pressure Range = J**



**Standard-Switch Setting Capability  
Pressure Range = 1**



**Standard-Switch Setting Capability  
Pressure Range = 5**



## EMERSON CLIMATE TECHNOLOGIES-Temperature Pressure Controls FSX Electric Fan Speed Control

The FSX Fan Speed Control controls the head pressure in air-cooled condensers by reducing the fan speed to maintain head pressure as the outside temperatures/condenser pressure drops. As the motor speed drops under lower ambient/load condition fan noise is also reduced.



The FSX is designed for use with permanent split capacitor and shaded pole fan motors, approved for use by motor/equipment manufacturers for variable voltage, phase angle (triac) speed control.

### Features

- Connector includes 2 m. cable installed (FSF and FSO)
- Connector turnable (in 90° steps)
- Compact Design
- State-of-the-Art Electronics
- Direct mount—Easily retrofit to suitable motor
- Low Pressure “Turn Off” Operation
- Adjustable Pressure Setting
- Multiple FSX controls can be used in parallel on multi-circuit condensers
- 2 Cable types:  
FSF-N15 with internal circuit design to comply with EC-Directive 89/336/EC (Electromagnetic compatibility requirements for Europe)  
FSO-N15, standard with internal voltage spike and over current protection

### Specifications

- Nominal current: 0.2 to 4 Amp max up to 104°F (40°C)  
0.2 to 2.5 Amp max up to 140°F (60°C)
- Starting current: max. 8 Amp
- Temperature Range  
Storage and transportation: -30°C to 70°C  
Ambient temperature: -20°C to 55°C  
Medium temperature: -20°C to 70°C
- Pressure Operated Fan Speed Control
- Supply Voltage: 230V AC + 15-20%.
- Protection: Provide an ultimate enclosure to protect from direct rain, sunlight and external damage.
- Weight: 3-1/2 ounces
- Approvals: UL/CUL file number E183816  
CE Low Voltage Directive 72/23/EC  
Connector per DIN 43650

### Options

- Custom Calibration
- Other Operating Voltages/Pressure Ranges

**Nomenclature** example: FSX-41S

FS	X	4	1			S
Fan Speed Control	Series	Max. Current Rating 4 = 4 Amps maximum at 104°F ambient temperature	Pressure Range			Pressure Connection S = 1/4" SAE female (7/16" -20 UNF) with Schrader Depressor
			Pressure Range	Modulating Band	Factory Setting	
			1 = 6.5 to 15 bar (95 to 220psig)	35 psig	11 bar (160 psig)	
			2 = 13 to 25 bar (190 to 360 psig)	55 psig	16.2 bar (235 psig)	
			3 = 12.4 to 28.4 (180 to 411 psig)	66 psig	21.8 bar (316 psig)	

### Ordering Information

PCN	Adjustable Range (PSI)	Modulating Band (PSI)	Factory Setting (PSI)	Pressure Connection
097993	190 to 360	55	235	7/16" -20 UNF Female
097774	180 to 411	66	316	7/16" -20 UNF Female

### Parts/Accessories

PCN	TYPE
097995	FSF-N15 Cable (EMC)
097775	FSO-N15 Cable (standard)

Compressors, Chillers, Condensers

Motors

Electrical

Heating Components

Indoor Air Quality

Thermostats

Oils & Chemicals

Accessories, Supplies & Commodities

Tools & Instruments

Refrigeration

## EMERSON CLIMATE TECHNOLOGIES-Temperature Pressure Controls FF444 Industrial Pressure Control

The FF444 Industrial Pressure Controls are general purpose switches suitable for oil, water and air at pressures up to 465 psig.

### Typical Applications

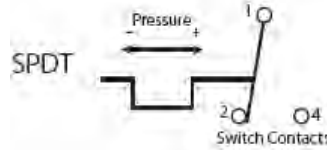
- Industrial Pressure Control
- Pneumatic and Hydraulic Systems
- Oil Lubrication Systems
- Pump/Compressor Control

### Features

- SPDT snap-action contacts
- Independent adjustable upper and lower switching pressures
- Diaphragm-type control for low pressure applications (Buna N diaphragm):
  - resistant to mineral oils
  - medium temperatures up to 160°F
- Transparent polyamide hood – U.V. resistant
- Surface mounted Type 4 enclosure
- Optional manual reset locking on pressure rise

### Options

- Optional manual reset locking on pressure rise



### Specifications

- Control circuit rating: 5 A (B300)
- Rated voltage: 300 VAC maximum
- Ambient operating temperature: -10°F to +120°F
- Medium temp. at pressure element: + 160°FMax.
- Resistance to vibration: (4 Hz to 1000 Hz) 4g
- Weight: 1.1 lbs.
- UL/CUL file number: E85974

Description	120VAC	240VAC
Maximum motor rating single phase	1/2 hp	1 -1/2 hp
Motor rated, FLA	10 A	10 A
Motor rated, LRA	60 A	60 A

**Nomenclature** example: FF444-V2-DRF

FF444	V2					D	R	F
	Lower Switch Point Range	Upper Switch Point Range	Smallest Differential @ Lower-Higher end of Range	Standard Settings		Valve Design	Reset Type	Pressure Connection
Industrial Pressure Control	V1	0.5-27 psig 0.04-1.89 bar	1.5-29 psig 0.11-2 bar	1-1.5 psig 0.07-0.11 bar	7/22 psig 0.5/1.5 bar	D = Diaphragm	A = Auto R = Manual, Locking on Pressure Rise	A = 7/16"-20 UNF male  F = 1/4"-18 NPTF
	V4	6-217 psig 0.4-15 bar	15-232 psig 1-16 bar	9-14 psig 0.6-1 bar	58/174 psig 4/12 bar			
	V5	12-435 psig 0.8-30 bar	29-464 psig 2-32 bar	17-29 psig 1.2-2 bar	145/290 psig 10/20 bar			

### Ordering Information

PCN	Description
097308	FF444-V1-DAF
097311	FF444-V4-DAF
097312	FF444-V5-DAF
097379	FF444-V4-DRF

### Dimensional Data (in)

