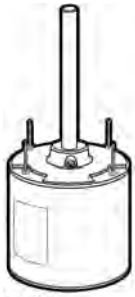


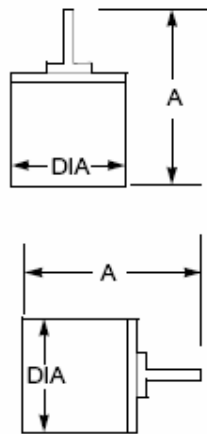
# MOTORS

## CONDENSER FAN

### TOTALINE®



P163



- Suitable for vertical shaft up or horizontal mounting
- Permanent split capacitor
- Totally enclosed shaft end bracket, open opposite end
- Slinger for bearing protection
- 26" leads
- Reversible by electrical reconnection
- Class B insulation
- The following motors are high-efficiency:
  - P257-8328
  - P257-8329
  - P257-8330

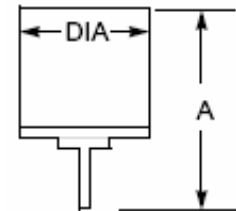
PART NO	HP	VOLTS	PH	HZ	FLA	THERM PROT	RPM	SPD	ROTAT	BRGS	FRM	SHAFT POS	SHAFT DIA	SHAFT LEN	DIA	A	CAPACITOR MFD/VOLT
P257-8328	1/4	208-230	1	60	1.8	AUTO	1075	1	REV	SLV	48Y	UP/HOR	1/2	6	5.6	11.1	5/370
P257-8028	1/4	208-230	1	60	1.5	AUTO	1075	2	REV	SLV	48Y	UP/HOR	1/2	6	5.6	11.1	5/370
P257-8046	1/4	208-230	1	60	1.5	AUTO	1075	2	REV	BALL	48Y	UP/HOR	1/2	6	5.6	11.1	5/370
P257-8329	1/3	208-230	1	60	2.4	AUTO	1075	1	REV	SLV	48Y	UP/HOR	1/2	6	5.6	11.4	7.5/370
P257-8029	1/3	208-230	1	60	2.1	AUTO	1075	2	REV	SLV	48Y	UP/HOR	1/2	6	5.6	11.9	7.5/370
P257-8031	1/3	208-230	1	60	2.1	AUTO	1075	2	REV	BALL	48Y	UP/HOR	1/2	6	5.6	11.9	7.5/370
P257-8026	1/3	208-230	1	60	2.2	AUTO	825	1	REV	BALL	48Y	UP/HOR	1/2	6	5.6	12.1	10/370
P257-8330	1/2	208-230	1	60	3.6	AUTO	1075	1	REV	SLV	48Y	UP/HOR	1/2	6	5.6	12.1	10/370
P257-8030	1/2	208-230	1	60	3.5	AUTO	1075	2	REV	SLV	48Y	UP/HOR	1/2	6	5.6	12.4	10/370
P257-8032	1/2	208-230	1	60	3.5	AUTO	1075	2	REV	BALL	48Y	UP/HOR	1/2	6	5.6	12.4	10/370
P257-8048	3/4	208-230	1	60	4.1	AUTO	1075	2	REV	BALL	48Y	UP/HOR	1/2	6	5.6	12.4	15/370

### ALL ANGLE



P164

- Totally enclosed for shaft down applications
- Slinger protects bearing when motor is mounted in shaft up or horizontal position (remove slinger when motor is mounted in shaft down position)
- Rated continuous air over
- Permanent split capacitor
- Class B insulation
- Reversible by electrical reconnection
- 26" leads
- 6" shaft with 2 full flats, 90° apart



PART NO	HP	VOLTS	PH	HZ	FLA	THERM PROT	RPM	SPD	ROTAT	BRGS	FRM	SHAFT POS	SHAFT DIA	SHAFT LEN	DIA	A	CAPACITOR MFD/VOLT
P257-8728	1/4	208-230	1	60	1.8	AUTO	1075	1	REV	SLV	48Y	ALL	1/2	6	5.6	10.7	5/370
P257-8729	1/3	208-230	1	60	2.4	AUTO	1075	1	REV	SLV	48Y	ALL	1/2	6	5.6	11.0	7.5/370
P257-8730	1/2	208-230	1	60	3.5	AUTO	1075	1	REV	SLV	48Y	ALL	1/2	6	5.6	12.2	10/370
P257-8228	1/4	208-230	1	60	1.8	AUTO	1075	2	REV	SLV	48Y	ALL	1/2	6	5.6	10.7	5/370
P257-8229	1/3	208-230	1	60	2.4	AUTO	1075	2	REV	SLV	48Y	ALL	1/2	6	5.6	11.0	7.5/370
P257-8230	1/2	208-230	1	60	3.5	AUTO	1075	2	REV	SLV	48Y	ALL	1/2	6	5.6	12.2	10/370

# MOTORS

## CONDENSER FAN

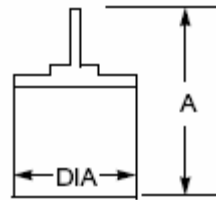
TOTALINE®

ALL ANGLE

THREE PHASE



- Vertical shaft up mount
- 60°C ambient
- Positioning screws in motor shell
- Water slinger for bearing protection
- Class B insulation
- Reversible rotation
- 5/8" x 6" shaft with 5" flat and 5" long keyway - key not provided



P165

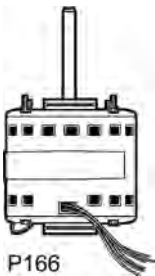
PART NO	HP	VOLTS	PH	HZ	FLA	RPM	SPD	ROTAT	BRGS	FRM	SHAFT POS	SHAFT DIA	SHAFT LEN	DIA	A
P257-E378	3/4	208-230/460	3	60	3.6/1.8	1140	1	REV	BALL	56	UP	5/8	6	6.5	16.8
P257-E379	1.0	208-230/460	3	60	4.8/2.4	1140	1	REV	BALL	56	UP	5/8	6	6.5	16.8
P257-E380	1-1/2	208-230/460	3	60	6.4/3.2	1140	1	REV	BALL	56	UP	5/8	6	6.5	16.8

## BLOWER

TOTALINE®

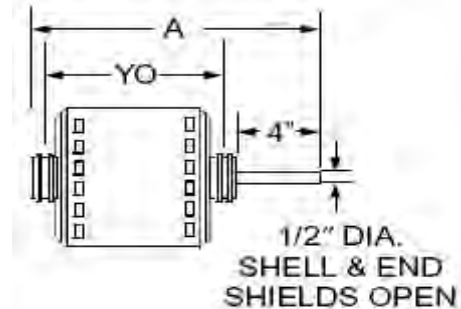
DIRECT DRIVE

TWO SPEED



P166

- Electrically reversible
- Continuous air over - 40°C
- All angle sleeve bearings
- Automatic reset overload protection
- 1/2" Diameter shaft 4" long with full flat
- 2-1/4" Resilient rings with 2-1/2" Snap rings
- 1/2" Extended thru bolts shaft end
- Open construction, non-ventilated motors for exhaust, air circulators, unit heaters, unit coolers, and other air-over applications.



PART NO	HP	VOLTS	PH	HZ	FLA	THERM PROT	RPM	SPD	ROTAT	BRGS	FRM	SHAFT POS	SHAFT DIA	SHAFT LEN	A	YO	CAPACITOR MFD/VOLT
P257-8383	1/4	115	1	60	4.2	AUTO	1075	2	REV	SLV	48YZ	ALL	1/2	4.0	9.1	4.9	5/370
P257-8384	1/4	208-230	1	50/60	2.0	AUTO	1075	2	REV	SLV	48YZ	ALL	1/2	4.0	9.1	4.9	5/370
P257-8385	1/3	115	1	60	6.2	AUTO	1075	2	REV	SLV	48YZ	ALL	1/2	4.0	9.4	5.1	5/370
P257-8386	1/3	208-230	1	50/60	2.9	AUTO	1075	2	REV	SLV	48YZ	ALL	1/2	4.0	9.4	5.1	5/370
P257-8387	1/2	115	1	50/60	9.0	AUTO	1075	2	REV	SLV	48YZ	ALL	1/2	4.0	10.4	6.1	5/370
P257-8388	1/2	208-230	1	50/60	4.3	AUTO	1075	2	REV	SLV	48YZ	ALL	1/2	4.0	10.1	5.9	5/370
P257-8389	3/4	115	1	60	10.3	AUTO	1075	2	REV	SLV	48YZ	ALL	1/2	4.0	10.4	6.1	15/370
P257-8390	3/4	208-230	1	60	4.4	AUTO	1075	2	REV	SLV	48YZ	ALL	1/2	4.0	10.4	6.1	10/370