

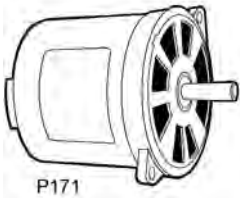
MOTORS

GENERAL PURPOSE

OIL BURNER

SPLIT PHASE

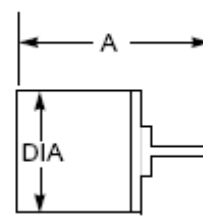
TOTALINE®



- Split phase
- 40°C ambient
- Class A insulation
- Reversible rotation by electrical reconnection
- 20" leads included

The following motors are Totally Enclosed Non-Ventilated: • P267-9782 • P267-9784

The following motor is Totally Enclosed except Open Face: • P267-9783



PART NO	HP	VOLTS	PH	HZ	FLA	THERM PROT	RPM	SPD	ROTAT	BRGS	FRM	DIA	A
P267-9782	1/8	115	1	60	2.9	MANUAL	1725	1	REV	SLV	48N	5.6	7.4
P267-9783	1/7	115	1	60	2.4	MANUAL	3450	1	REV	SLV	48N	5.6	7.3
P267-9784	1/6	115	1	60	3.3	MANUAL	1725	1	REV	SLV	48N	5.6	7.6

MULTI-PURPOSE

TOTALSAVER



TotalSaver™

PART NO	HP	VOLTAGE	FLA	RPM/SPEEDS	BEARINGS	DIMENSIONS (INCHES) (Motor height plus shaft length)	CAPACITOR REQUIRED	SHAFT LENGTH	HZ
T257-3727	1/6	208/230	1.07	1075/1	SLEEVE	10.63	5/370	6.5"X1/2"	60
T257-3728	1/4	208/230	2.00	1075/1	SLEEVE	10.63	5/370	6.5"X1/2"	60
T257-3729	1/3	208/230	2.97	1075/1	SLEEVE	11.61	7.5/370	6.5"X1/2"	60
T257-3730	1/2	208/230	3.55	1075/1	SLEEVE	12.13	10/370	6.5"X1/2"	60
T257-3731	3/4	208/230	5.50	1075/1	SLEEVE	12.64	10/370	6.5"X1/2"	60
T257-3583	1/4	115	3.6	1075/3	SLEEVE	8.66	5/370	4.5"X1/2"	60
T257-3584	1/4	208/230	1.8	1075/3	SLEEVE	8.66	5/370	4.5"X1/2"	60
T257-3585	1/3	115	6.60	1075/3	SLEEVE	8.90	5/370	4.5"X1/2"	60
T257-3586	1/3	208/230	2.9	1075/3	SLEEVE	8.90	5/370	4.5"X1/2"	60
T257-3587	1/2	115	9.5	1075/3	SLEEVE	9.88	5/370	4.5"X1/2"	60
T257-3588	1/2	208/230	3.95	1075/3	SLEEVE	9.88	5/370	4.5"X1/2"	60
T257-3589	3/4	115	10	1075/3	SLEEVE	9.88	15/370	4.5"X1/2"	60
T257-3590	3/4	208/230	5	1075/3	SLEEVE	9.88	10/370	4.5"X1/2"	60

MOTORS

MULTI-PURPOSE

Gas or Electric Furnace Motors

This multi-purpose motor will replace many furnace motors.

- 115, 208-230 volt.
- 3/4, 1/2, 1/3, 1/4, 1/5 & 1/6 HP.

Condenser Fan Motors

This Multi-Purpose motor will replace many furnace motors.

- 208-230 Volt.
- 1/3, 1/4, 1/5 & 1/6 HP.

Additional Features:

- Reversible rotation.
- 48 Frame, 5.6" diameter.
- 36" leads.
- All-position mount.
- Mounts with thru bolts, shell holes or belly band

DIRECT DRIVE APPLICATIONS

P257-E5460 1/2 HP (115 V) and P257-E5461 (208-230 V)



NOW INCLUDES: Extended Mounting Studs, Hub Rings, Easy Reversing Connections (Wt. 15 lbs)

MOTOR TO REPLACE	SPEEDS TO USE (Color/Approx. rpm)*		370 V CAPACITOR	TOTALINE CAPACITOR	P257-E5460 115 V FLA	P257-E5461 208-230 V FLA
	Cooling	Heating				
1/2 HP	High (Black/1110)	Med-Hi (Blue/1050) or Med-Low (Yellow/825)	10 mfd	P291-1003	7.3	3.6
1/3 HP	High (Black/1120)	Med-Hi (Blue/1090) or Med-Low (Yellow/1030)	5 mfd**	P291-0503	6.9	3.5
1/4 HP	Med-Hi (Blue/1125)	Med-Low (Yellow/1090) or Low (Red/1010)	5 mfd**	P291-0503	5.5	2.8
1/5 HP	Med-Low (Yellow/1110)	Low (Red/1060)	5 mfd**	P291-0503	3.6	1.9
1/6 HP	Low (Red/1085)	Low (Red/1085)	5 mfd**	P291-0503	2.8	1.3

*RPM data from cold motor at nominal horsepower. Actual load will determine effective rpm.

**Using a 7.5 mfd/370 V (Totaline No. P291-0753) capacitor will result in an approximately 10% stronger motor. This can be used where there is more airflow needed.

P257-E5470 3/4 HP (115 V) and P257-E5471 (208-230 V)

Includes: Ball Bearings, Extended Mounting Studs, Hub Rings, Easy Reversing Connections (Wt. 22 lbs)

MOTOR TO REPLACE	SPEEDS TO USE (Color/Approx. RPM)*		370 V CAPACITOR	TOTALINE CAPACITOR	P257-E5470 115 V FLA	P257E-5471 208-230 V FLA
	Cooling	Heating				
3/4 HP	High (Black/1110)	Med-Hi (Blue/1080) or Med-Low (Yellow/1010)	20 mfd	P291-2003	8.1	3.8
1/2 HP	High (Black/1130)	Med-Low (Yellow/1090) or Low (Red/1035)	10 mfd	P291-1003	6.6	3.7
1/3 HP	Med-Hi (Blue/1150)	Med-Low (Yellow/1130) or Low (Red/1100)	10 mfd	P291-1003	4.6	2.5
1/4 HP	Med-Low (Yellow/1150)	Low (Red/1130)	10 mfd	P291-1003	3.8	1.8
1/5 HP	Low (Red/1140)	Low (Red/1140)	10 mfd	P291-1003	3.1	1.7

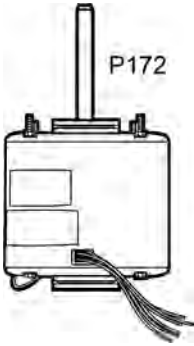
*RPM data from cold motor at nominal horsepower. Actual load will determine effective rpm.

MOTORS

MULTI-PURPOSE

CONDENSER FAN MOTOR

P257-E5462 1/3 to 1/6 HP 1075 RPM Applications, (208/230 V)



Includes: Ball Bearings, Extended Mounting Studs, Easy Reversing Connections (Wt. 14 lbs)

MOTOR TO REPLACE	SPEED TO USE (COLOR/RPM)*	370V CAPACITOR†	TOTALINE CAPACITOR	FLA
1/3 HP	High (Black/1110)	5 mfd†	P291-0503	2.6
1/4 HP	High (Black/1135)	5 mfd†	P291-0503	2.5
1/5 HP	Low (Red/1110)	5 mfd†	P291-0503	2.0
1/6 HP	Low (Red/1125)	5 mfd†	P291-0503	1.8

*RPM data from cold motor at nominal horsepower. Actual load will determine effective rpm.
 †At 208 V a 7.5 mfd/370 V capacitor should be used (Totaline P291-0753). Amps will be similar.

P257-E5464 1/3 to 1/6 HP 825 RPM Applications, (208/230 V)

Includes: Ball Bearings, Extended Mounting Studs, Easy Reversing Connections (Wt. 15 lbs)

MOTOR TO REPLACE	SPEED TO USE (COLOR/RPM)*	370V CAPACITOR†	TOTALINE CAPACITOR	FLA
1/3 HP	High (Black/825)	7.5 mfd†	P291-0753	1.9
1/4 HP	High (Black/835)	7.5 mfd†	P291-0753	1.5
1/5 HP	Low (Red/825)	7.5 mfd†	P291-0753	1.2
1/6 HP	Low (Red/835)	7.5 mfd†	P291-0753	1.0

*RPM data from cold motor at nominal horsepower. Actual load will determine effective rpm.
 †At 208 V a 10 mfd/370 V capacitor should be used (Totaline P291-1003). Amps will be similar.

P257-E5465 1/2 to 1/5 HP 1075 RPM Applications, (208/230 V)

Includes: Ball Bearings, Extended Mounting Studs, Easy Reversing Connections (Wt. 19 lbs)

MOTOR TO REPLACE	SPEED TO USE (COLOR/RPM)*	370V CAPACITOR†	TOTALINE CAPACITOR	FLA
1/2 HP	High (Black/1110)	10 mfd†	P291-1003	3.0
1/3 HP	High (Black/1135)	10 mfd†	P291-1003	2.2
1/4 HP	Low (Red/1110)	10 mfd†	P291-1003	1.6
1/5 HP	Low (Red/1125)	10 mfd†	P291-1003	1.3

*RPM data from cold motor at nominal horsepower. Actual load will determine effective rpm.
 †At 208 V a 12.5 mfd/370 V capacitor should be used (Totaline P291-1253). Amps will be similar.