

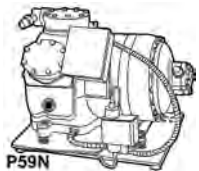
COMPRESSORS, CHILLERS & CONDENSERS

SEMI-HERMETIC

CARLYLE

06D

MEDIUM AND HIGH TEMP, AIR COOLED



P59N

06D MEDIUM AND HIGH TEMPERATURE COMPRESSOR APPLICATION DATA

MODEL NO	HP	CYL	CFM @ 1750 RPM	REFR	SUCTION TEMP RANGE (F)	SST	SCT	SC	BTUH
06DM808	3	2	8.0	R-22	0 to 50	45°	130°	0°	36.5
06DM313	5	4	13.1	R-22	0 to 50	45°	130°	0°	56.9
06DM316	5	4	15.9	R-22	0 to 50	45°	130°	0°	-
06D()818	6.5	4	18	R-22	0 to 50	45°	130°	0°	82.9
06D()824	7.5	6	24	R-22	0 to 50	45°	130°	0°	105.8
06D()825	7.5	6	24	R-22	0 to 50	45°	130°	0°	105.8
06D()328	10	6	28	R-22	0 to 50	45°	130°	0°	127.8
06D()337	10	6	37.1	R-22	0 to 50	45°	130°	0°	-
06D()537	15	6	37	R-22	0 to 50	45°	130°	0°	175.2

MEDIUM AND HIGH TEMP, WATER COOLED

MODEL NO	HP	CYL	CFM @ 1750 RPM	REFR	SUCTION TEMP RANGE (F)	SST	SCT	SC	BTUH
06DM808	3	2	8.0	R-22	0 to 50	40°	105°	0°	39.9
06DM313	5	4	13.1	R-22	0 to 50	40°	105°	0°	62.9
06DM316	5	4	15.9	R-22	0 to 50	40°	105°	0°	77.9
06D()818	6.5	4	18	R-22	0 to 50	40°	105°	0°	90.8
06D()824	7.5	6	24	R-22	0 to 50	40°	105°	0°	117.3
06D()825	7.5	6	24	R-22	0 to 50	40°	105°	0°	117.3
06D()328	10	6	28	R-22	0 to 50	40°	105°	0°	140
06D()337	10	6	37.1	R-22	0 to 50	40°	105°	0°	185.6
06D()537	15	6	37	R-22	0 to 50	40°	105°	0°	190.3

COMPRESSORS, CHILLERS & CONDENSERS

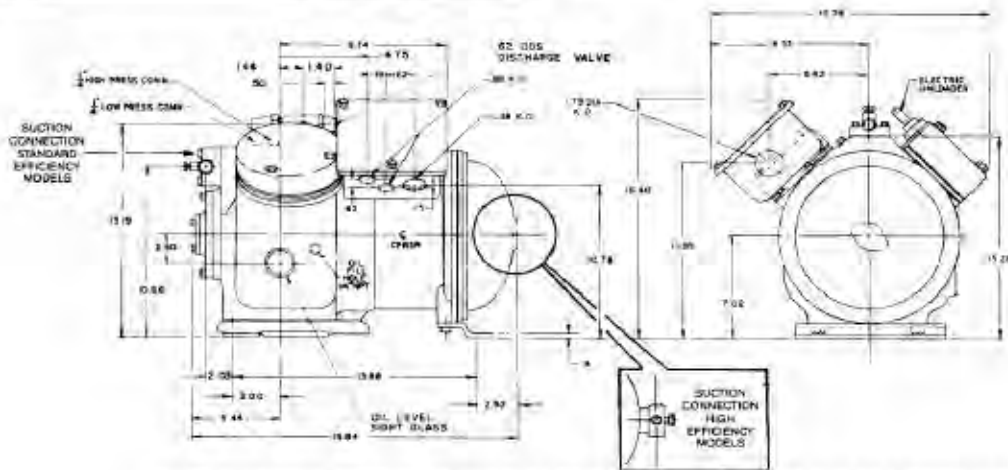
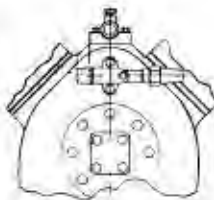
SEMI-HERMETIC

CARLYLE

06D OUTLINE DRAWINGS

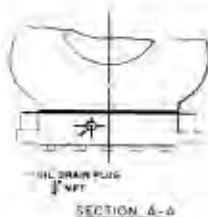
4 CYLINDER

	13 CFM	16 CFM
NO. OF CYLINDERS	4	4
BORE AND STROKE (in.)	2.0 x 1.0	2.0 x 1.25
DISPLACEMENT CFM AT 1750 RPM	13.00	15.90
OIL CHARGE, PINTS CPP33-2	5.0	5.0
DRY WEIGHT LESS SERVICE VALVES	192 LBS	192 LBS

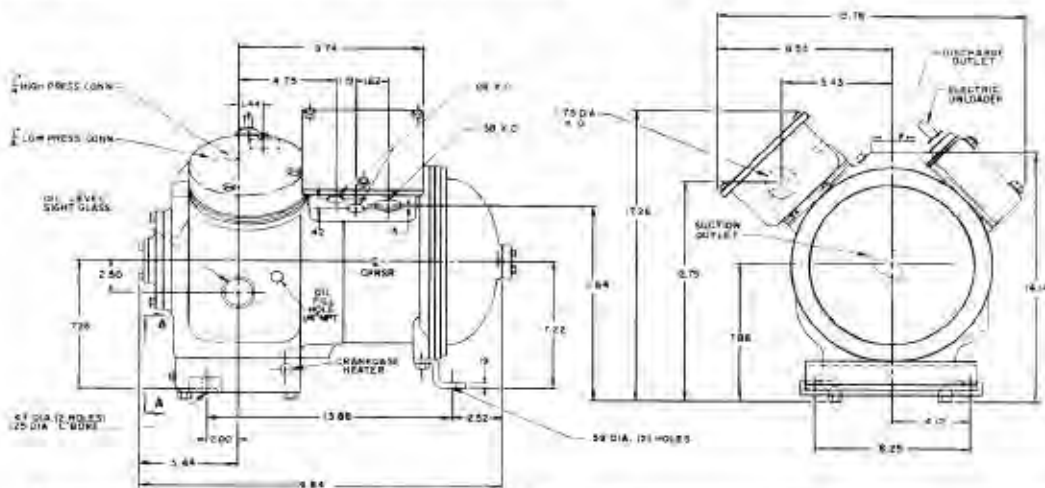


NOTE: SUCTION SERVICE VALVE MAY ALSO BE MOUNTED ON OIL PUMP END OF COMPRESSOR.

	18 CFM	20 CFM
NO. OF CYLINDERS	4	4
BORE AND STROKE (in.)	2.0 x 1.435	2.0 x 1.559
DISPLACEMENT CFM AT 1750 RPM	16.26	19.59
OIL CHARGE, PINTS CPP33-2	7.0	7.0
DRY WEIGHT LESS SERVICE VALVES	221 LBS	221 LBS



NOTE: OIL PUMP IS AUTOMATICALLY REVERSIBLE FOR EITHER DIRECTION OF ROTATION.



Generally, for a compressor changeout in a Carrier/BDP unit the use of existing circuit breaker(s) is acceptable.

NOTE: Compressors shown with Optional Accessories – Contact your Distributor for details.

COMPRESSORS, CHILLERS & CONDENSERS

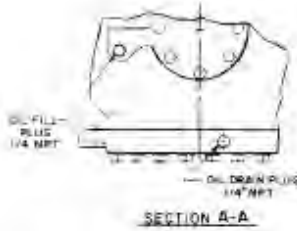
SEMI-HERMETIC

CARLYLE

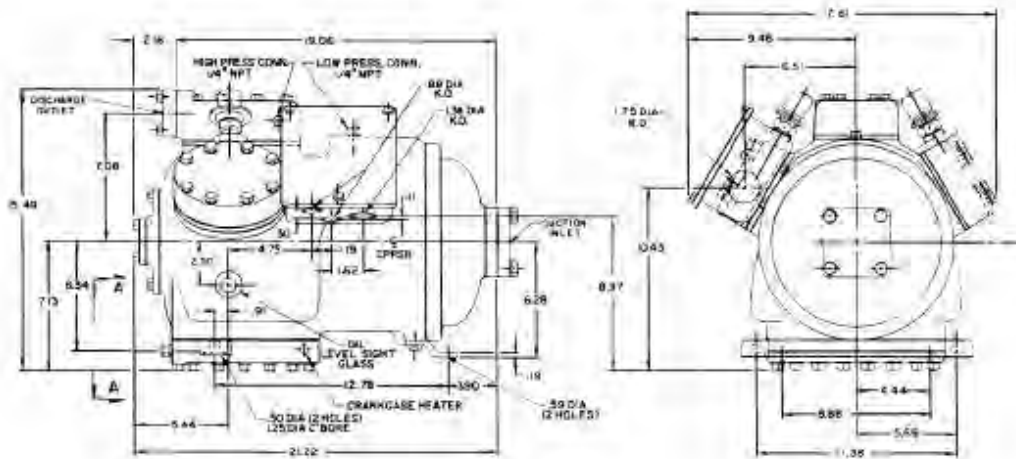
06D OUTLINE DRAWINGS

6 CYLINDER

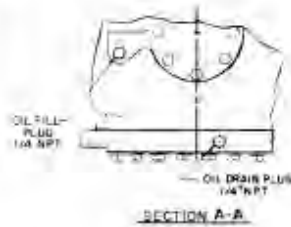
	24 CFM
NO. OF CYLINDERS	6
BORE AND STROKE (IN.)	2.0 X 1.25
DISPLACEMENT CFM AT 1750 RPM	23.66
OIL CHARGE, PINTS CPP33-2	9.5
DRY WEIGHT LESS SERVICE VALVES	275 LBS



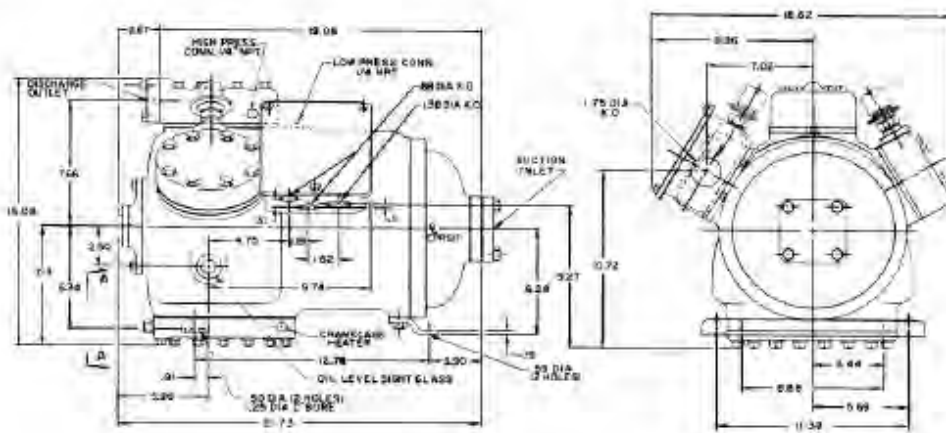
NOTE: OIL PUMP IS AUTOMATICALLY REVERSIBLE FOR EITHER DIRECTION OF ROTATION.



	28 CFM	37 CFM
NO. OF CYLINDERS	6	6
BORE AND STROKE (IN.)	2.0 X 1.469	2.0 X 1.983
DISPLACEMENT CFM AT 1750 RPM	28.04	37.00
OIL CHARGE, PINTS CPP33-2	9.5	9.5
DRY WEIGHT LESS SERVICE VALVES	305 LBS	305 LBS



NOTE: OIL PUMP IS AUTOMATICALLY REVERSIBLE FOR EITHER DIRECTION OF ROTATION.



NOTE: Compressors shown with Optional Accessories – Contact your Distributor for details.

COMPRESSORS, CHILLERS & CONDENSERS

SEMI-HERMETIC
CARLYLE
06D
STANDARD EFFICIENCY MODELS

PHYSICAL AND ELECTRICAL DATA

MODEL NO	VOLTS	PH	HZ	HP	CYL	CFM	OIL CHG (PINTS)	MAX WATTS	MAX RLA	MTA	LRA	APPL
06DX8186-0600	460	3	60	6.5	4	18.3	7	10,800	15.7	22	62	AC
06DX8186-1200	208/230	3	60	6.5	4	18.3	7	10,800	34.9	48.8	137	AC
06DX8186-0600	400	3	50	6.5	4	15	7	9,000	15.7	22	62	AC
06DX7246-0100	575	3	60	6.5	6	23.9	10	10,800	14.1	17.6	50	AC
06DX7246-0600	460	3	60	6.5	6	23.9	10	10,800	17.6	22	62	AC
06DX7246-1200	208/230	3	60	6.5	6	23.9	10	10,800	39	48.8	137	AC
06DX8246-0100	575	3	60	7.5	6	23.9	10	14,100	15.9	22.2	62	AC
06DX8246-0600	460	3	60	7.5	6	23.9	10	14,100	19.9	27.8	77	AC
06DX8246-1200	208/230	3	60	7.5	6	23.9	10	14,100	43.9	61.5	170	AC
06DX3286-0100	575	3	60	10	6	28	10	15,900	17.9	25	69	AC
06DX3286-0600	460	3	60	10	6	28	10	15,900	22.1	31	86	AC
06DX3286-1200	208/230	3	60	10	6	28	10	15,900	49.3	69	191	AC
06DX3376-0100	575	3	60	10	6	37.1	10	15,900	17.9	25	69	AC
06DX3376-0600	460	3	60	10	6	37.1	10	15,900	22.1	31	86	AC
06DX3376-1200	208/230	3	60	10	6	37.1	10	15,900	49.3	69	191	AC
06DX5376-0100	575	3	60	15	6	37.1	10	20,700	22.9	32	96	AC
06DX5376-0600	460	3	60	15	6	37.1	10	20,700	28.6	40	120	AC
06DX5376-1200	208/230	3	60	15	6	37.1	10	20,700	63.6	89	266	AC
06DX7246-0600	400	3	50	6.5	6	20	10	9,000	17.6	22	62	AC
06DX8246-0600	400	3	50	7.5	6	20	10	11,700	19.7	27.8	77	AC
06DX3286-0600	400	3	50	10	6	23.3	10	13,200	22.1	31	86	AC
06DX3376-0600	400	3	50	10	6	31	10	13,200	22.1	31	86	AC
06DX5376-0600	400	3	50	15	6	31	10	17,200	28.6	40	120	AC

STANDARD EFFICIENCY MODELS, PART WIND START

MODEL NO	VOLTS	PH	HZ	HP	CYL	CFM	OIL CHG (PINTS)	MAX WATTS	MAX RLA	MTA	LRA	APPL
06DX3376-1400	200	3	60	10	6	37.1	10	15,900	27.6/27.6	34.5/34.5	115/92	AC
06DX3376-1500	230	3	60	10	6	37.1	10	15,900	24.8/24.8	31.0/31.0	103/86	AC
06DX5376-1400	200	3	60	15	6	37.1	10	20,700	35.6/35.6	44.5/44.5	160/133	AC
06DX5376-1500	230	3	60	15	6	37.1	10	20,700	32.0/32.0	40.0/40.0	144/120	AC
06DX3286-1800	220	3	50	10	6	23.3	10	13,200	41.6	52	143	AC
06DX3376-1800	220	3	50	10	6	31	10	13,200	41.6	52	143	AC
06DX5376-1800	220	3	50	15	6	31	10	17,200	46.9	67	200	AC

MED TEMP, SINGLE PHASE

MODEL NO	VOLTS	PH	HZ	HP	CYL	CFM	OIL CHG (PINTS)	MAX WATTS	MAX RLA	MTA	LRA	APPL
06DM8086-0350	230	1	60	3	2	8	3	2800	20	28	110	AC
06DM1096-0350	230	1	60	2	2	8.7	3	2800	12.5	15.6	50	AC
06DM3136-0350	230	1	60	5	4	13.1	5	6600	28.6	40	150	AC
06DM3166-0350	230	1	60	5	4	15.9	5	6600	28.6	40	150	AC
06DM3186-0350	230	1	60	5	4	18.3	7	6600	28.6	40	150	AC
06DM5186-0350	230	1	60	5.5	4	18.3	7	7700	36.8	46	148	AC
06DM7186-0350	230	1	60	5	4	18.3	7	6600	28.6	40	150	AC

COMPRESSORS, CHILLERS & CONDENSERS

SEMI-HERMETIC
CARLYLE
06D
MED TEMP, THREE PHASE

MODEL NO	VOLTS	PH	HZ	HP	CYL	CFM	OIL CHG (PINTS)	MAX WATTS	MAX RLA	MTA	LRA	APPL
06DM8086-3150	575	3	60	3	2	8	3	4100	4.5	7	28.4	AC
06DM8086-3250	208/230	3	60	3	2	8	3	4100	11.2	17.4	71	AC
06DM8086-3650	460	3	60	3	2	8	3	4100	5.6	8.7	35.5	AC
06DM8086-3650	400	3	50	3	2	6.7	3	3400	7	8.7	35.5	AC
06DM3136-3150	575	3	60	5	4	13.1	5	6250	6.9	10.8	40	AC
06DM3136-3250	208/230	3	60	5	4	13.1	5	6250	17.3	27	100	AC
06DM3136-3650	460	3	60	5	4	13.1	5	6250	8.6	13.5	50	AC
06DM3166-3150	575	3	60	5	4	15.9	5	6250	6.9	10.8	40	AC
06DM3166-3250	208/230	3	60	5	4	15.9	5	6250	17.3	27	100	AC
06DM3166-3650	460	3	60	5	4	15.9	5	6250	8.6	13.5	50	AC
06DM3136-3650	400	3	50	5	4	11	5	5,200	10.8	13.5	50	AC
06DM3166-3650	400	3	50	5	4	13	5	5,200	10.8	13.5	50	AC
06DM3376-3150	575	3	60	10	6	37.1	10	16,500	16	25	91	AC
06DM3376-3650	460	3	60	10	6	37.1	10	16,500	19.9	31	114	AC
06DM3376-3250	208/230	3	60	10	6	37.1	10	16,500	39.7	62	228	AC
06DM3376-3650	400	3	50	10	6	31	10	13,700	22.1	31	114	AC

HIGH TEMP, SUCTION CUT OFF, THREE PHASE

MODEL NO	VOLTS	PH	HZ	HP	CYL	CFM	OIL CHG (PINTS)	MAX WATTS	MAX RLA	MTA	LRA	APPL
06DS3136-3100	575	3	60	5	4	13.1	5	6,250	6.9	10.8	40	AC
06DS3136-3600	460	3	60	5	4	13.1	5	6,250	8.6	13.5	50	AC
06DS3136-3200	208/230	3	60	5	4	13.1	5	6,250	17.3	27	100	AC
06DS8166-3100	575	3	60	6.5	4	15.9	5	10,800	12.6	17.6	64	AC
06DS8166-3600	460	3	60	6.5	4	15.9	5	10,800	15.7	22	80	AC
06DS8166-3200	208/230	3	60	6.5	4	15.9	5	10,800	31.5	44	160	AC
06DS8186-3100	575	3	60	6.5	4	18.3	7	10,800	11.3	17.6	64	AC
06DS8186-3600	460	3	60	6.5	4	18.3	7	10,800	14.1	22	80	AC
06DS8186-3200	208/230	3	60	6.5	4	18.3	7	10,800	28.2	44	160	AC
06DS3136-3600	400	3	50	5	4	11	5	5,200	10.8	13.5	50	AC
06DS8166-3600	400	3	50	6.5	4	13	5	9,000	15.7	22	80	AC
06DS8186-3600	400	3	50	6.5	4	15	7	9,000	15.7	22	80	AC
06DS8246-3100	575	3	60	7.5	6	23.9	10	12,800	14.2	22	79	AC
06DS8246-3600	460	3	60	7.5	6	23.9	10	12,800	17.8	27.8	99	AC
06DS8246-3200	208/230	3	60	7.5	6	23.9	10	12,800	35.5	55.5	198	AC
06DS8256-3100	575	3	60	7.5	6	23.9	10	12,800	14.2	22	79	AC
06DS8256-3600	460	3	60	7.5	6	23.9	10	12,800	17.8	27.8	99	AC
06DS8256-3200	208/230	3	60	7.5	6	23.9	10	12,800	35.5	55.5	198	AC
06DS3286-3100	575	3	60	10	6	28	10	16,500	16	25	91	AC
06DS3286-3600	460	3	60	10	6	28	10	16,500	19.9	31	114	AC
06DS3286-3200	208/230	3	60	10	6	28	10	16,500	39.7	62	228	AC
06DS5376-0100	575	3	60	15	6	37.1	10	20,700	20.5	32	96	AC
06DS5376-0600	460	3	60	15	6	37.1	10	20,700	25.6	40	120	AC
06DS5376-1200	208/230	3	60	15	6	37.1	10	20,700	57.1	89	266	AC
06DS5376-3600	400	3	50	15	6	31	10	17,200	32	40	120	AC
06DS8246-3600	400	3	50	7.5	6	20	10	10,700	19.9	27.8	99	AC
06DS3286-3600	400	3	50	10	6	23	10	13,700	22.1	31	114	AC

COMPRESSORS, CHILLERS & CONDENSERS

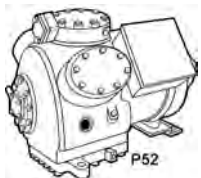
COMPRESSORS, CHILLERS & CONDENSERS

SEMI-HERMETIC

CARLYLE

06E

MEDIUM AND HIGH TEMP, AIR COOLED



06E MEDIUM AND HIGH TEMPERATURE COMPRESSOR APPLICATION DATA

MODEL NO	HP	CYL	CFM @ 1750 RPM	REFR	SUCTION TEMP RANGE (F)	SST	SCT	SC	BTUH
06E()150	15	4	50	R-22	0 to 50	45°	130°	0°	-
06E()250	20	4	50	R-22	0 to 50	45°	130°	0°	223.3
06E()265	25	6	65	R-22	0 to 50	45°	130°	0°	300.3
06E()266	25	4	66	R-22	0 to 50	45°	130°	0°	290
06E()175	25	6	75	R-22	0 to 50	45°	130°	0°	-
06E()275	30	6	75	R-22	0 to 50	45°	130°	0°	332.8
06E()199	35	6	99	R-22	0 to 50	45°	130°	0°	-
06E()299	40	6	99	R-22	0 to 50	45°	130°	0°	437.9

MEDIUM AND HIGH TEMP, WATER COOLED

MODEL NO	HP	CYL	CFM @ 1750 RPM	REFR	SUCTION TEMP RANGE (F)	SST	SCT	SC	BTUH
06E()150	15	4	50	R-22	0 to 50	40°	105°	0°	245.9
06E()250	20	4	50	R-22	0 to 50	40°	105°	0°	247
06E()265	25	6	65	R-22	0 to 50	40°	105°	0°	334.7
06E()266	25	4	66	R-22	0 to 50	40°	105°	0°	302.6
06E()175	25	6	75	R-22	0 to 50	40°	105°	0°	364.3
06E()275	30	6	75	R-22	0 to 50	40°	105°	0°	363
06E()199	35	6	99	R-22	0 to 50	40°	105°	0°	469.7
06E()299	40	6	99	R-22	0 to 50	40°	105°	0°	476.3

COMPRESSORS, CHILLERS & CONDENSERS

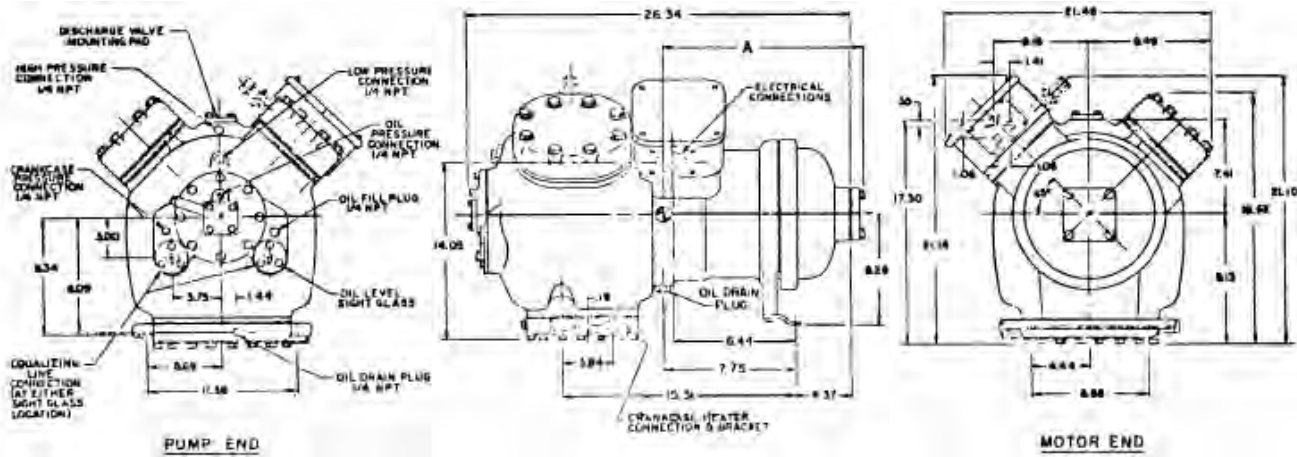
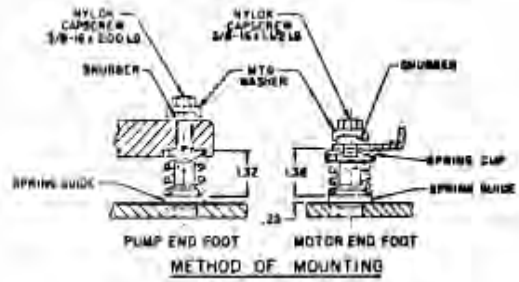
SEMI-HERMETIC

CARLYLE

06E OUTLINE DRAWINGS

4 CYLINDER

	06E()150	06E()250	06E()266
MOTOR HORSEPOWER	15	20	25
NO. OF CYLINDERS	4	4	4
BORE AND STROKE (in.)	2.688 x 2.188	2.688 x 2.188	2.688 x 2.874
DISPLACEMENT CFM AT 1750 RPM	50	50	66
OIL, CHARGE, PINTS CPP33-2	14	14	14
NAMEPLATE TEST PRESSURE - HIGH	450 PSI	450 PSI	450 PSI
NAMEPLATE TEST PRESSURE -LOW	315 PSI	315 PSI	315 PSI
DRY WEIGHT LESS SERVICE VALVES	390 LBS	400 LBS	416 LBS
MAX. OPERATING CONDITIONS R-22	50/120° F	50/145° F	50/130° F



NOTE: Compressors shown with Optional Accessories – Contact your Distributor for details.

COMPRESSORS, CHILLERS & CONDENSERS

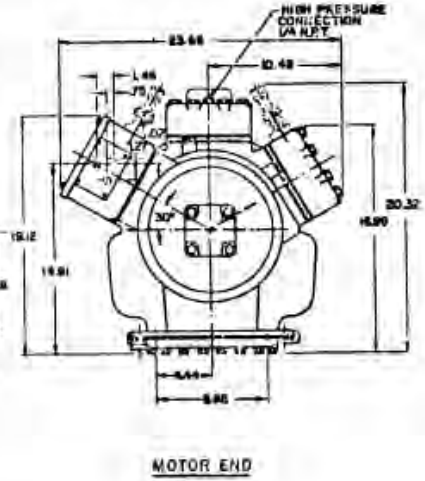
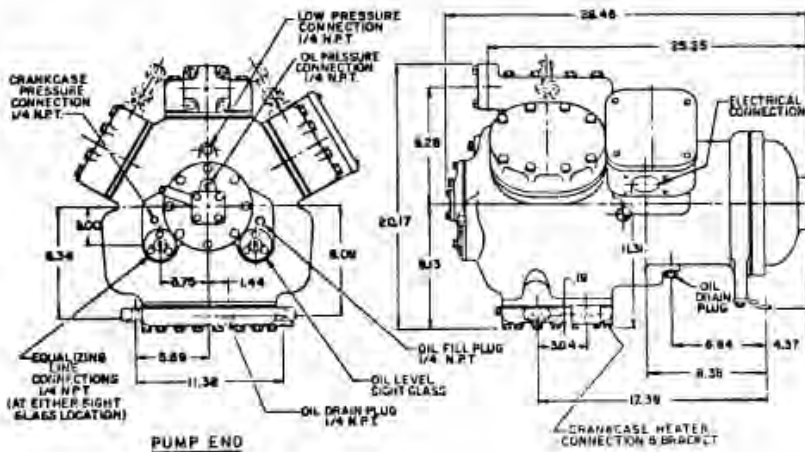
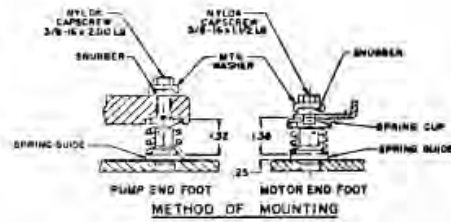
SEMI-HERMETIC

CARLYLE

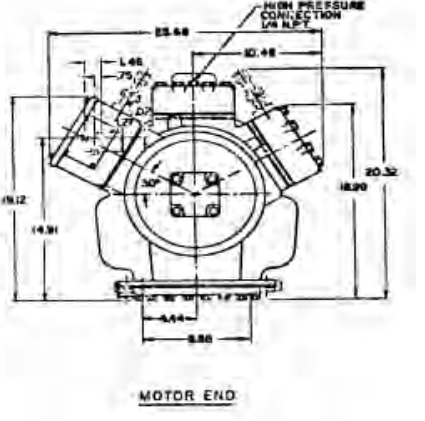
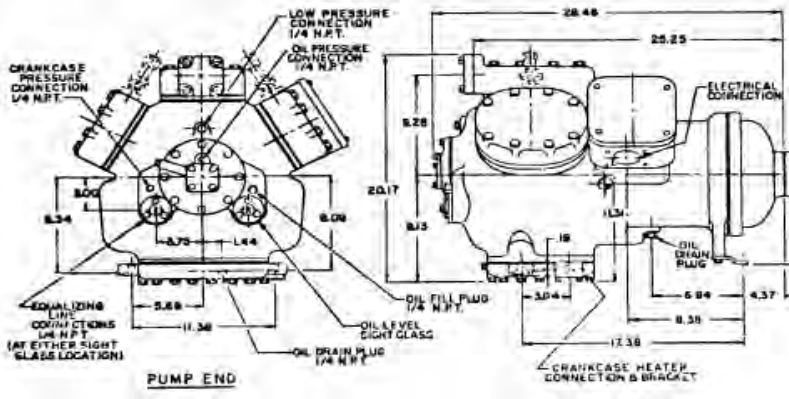
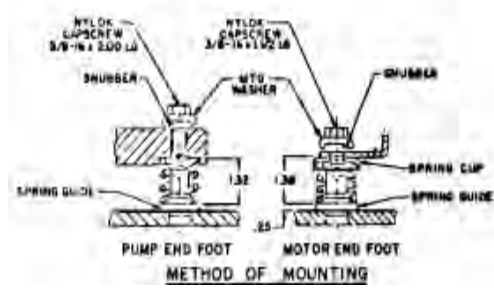
06E OUTLINE DRAWINGS

6 CYLINDER

	06E()265	06E()175	06E()275
MOTOR HORSEPOWER	25	25	30
NO. OF CYLINDERS	6	6	6
BORE AND STROKE (in.)	2.688 x 1.980	2.688 x 2.188	2.688 x 2.188
DISPLACEMENT CFM AT 1750 RPM	65	75	75
OIL, CHARGE, PINTS CPP33-2	19	19	19
NAMEPLATE TEST PRESSURE -HIGH	450 PSI	450 PSI	450 PSI
NAMEPLATE TEST PRESSURE -LOW	315 PSI	315 PSI	315 PSI
DRY WEIGHT LESS SERVICE VALVES	460 LBS	435 LBS	460 LBS
MAX. OPERATING CONDITIONS R-22	50/145° F	50/120° F	50/145° F



	06E()099	06E()199	06E()299
MOTOR HORSEPOWER	30	35	40
NO. OF CYLINDERS	6	6	6
BORE AND STROKE (in.)	2.688 x 2.874	2.688 x 2.874	2.688 x 2.874
DISPLACEMENT CFM AT 1750 RPM	65	99	99
OIL, CHARGE, PINTS CPP33-2	19	19	19
NAMEPLATE TEST PRESSURE -HIGH	450 PSI	450 PSI	450 PSI
NAMEPLATE TEST PRESSURE -LOW	315 PSI	315 PSI	315 PSI
DRY WEIGHT LESS SERVICE VALVES	495 LBS	495 LBS	519 LBS
MAX. OPERATING CONDITIONS R-22		50°/120° F	50°/145° F



Note: Compressors shown with optional accessories - contact your distributor for details

COMPRESSORS, CHILLERS & CONDENSERS

SEMI-HERMETIC
CARLYLE
06E, THREE PHASE
STANDARD EFFICIENCY

PHYSICAL AND ELECTRICAL DATA

MODEL NO	VOLTS	PH	HZ	HP	CYL	CFM	OIL CHG (PINTS)	MAX WATTS	MAX RLA	MTA	LRA	APPL
06EX150-160	575	3	60	15	4	50	14	22,000	31	38	98	AC
06EX150-360	208-230/460	3	60	15	4	50	14	22,000	72/36	90/45	283/142	AC
06EX150-660	460	3	60	15	4	50	14	22,000	36	45	142	AC
06EX250-160	575	3	60	20	4	50	14	25,300	36	45	120	AC
06EX250-360	208-230/460	3	60	20	4	50	14	25,300	87/44	108/54	345/173	AC
06EX250-660	460	3	60	20	4	50	14	25,300	45	56	150	AC
06EX266-160	575	3	60	25	4	66	14	33,600	46	57	164	AC
06EX266-360	208-230/460	3	60	25	4	66	14	33,600	112/56	140/70	446/223	AC
06EX266-660	460	3	60	25	4	66	14	33,600	57	71	205	AC
06EX150-360	200/400	3	50	15	4	41.7	14	18,300	72/36	90/45	283/142	AC
06EX150-660	400	3	50	15	4	41.7	14	18,300	36	45	142	AC
06EX250-360	200/400	3	50	20	4	41.7	14	21,100	87/44	108/54	345/173	AC
06EX250-660	400	3	50	20	4	41.7	14	21,100	45	56	150	AC
06EX266-360	200/400	3	50	25	4	55	14	28,000	112/56	140/70	446/223	AC
06EX266-660	400	3	50	25	4	55	14	28,000	57	71	205	AC
06EX265-160	575	3	60	25	6	68	19	33,600	46	57	164	AC
06EX265-360	208-230/460	3	60	25	6	68	19	33,600	112/56	140/70	446/223	AC
06EX265-660	460	3	60	25	6	68	19	33,600	57	71	205	AC
06EX175-160	575	3	60	25	6	75	19	33,600	46	57	164	AC
06EX175-360	208-230/460	3	60	25	6	75	19	33,600	112/56	140/70	446/223	AC
06EX175-660	460	3	60	25	6	75	19	33,600	57	71	205	AC
06EX275-160	575	3	60	30	6	75	19	39,100	52	65	176	AC
06EX275-360	208-230/460	3	60	30	6	75	19	39,100	135/68	168/84	506/253	AC
06EX275-660	460	3	60	30	6	75	19	39,100	65	81	220	AC
06EX299-160	575	3	60	40	6	99	19	54,000	77	97	240	AC
06EX299-360	208-230/460	3	60	40	6	99	19	54,000	189/95	236/118	690/345	AC
06EX299-660	460	3	60	40	6	99	19	54,000	97	121	300	AC
06EX265-360	200/400	3	50	20	6	54	19	28,000	112/56	140/70	446/223	AC
06EX265-660	400	3	50	20	6	54	19	28,000	57	71	205	AC
06EX175-360	200/400	3	50	25	6	62.5	19	28,000	112/56	140/70	446/223	AC
06EX175-660	400	3	50	25	6	62.5	19	28,000	57	71	205	AC
06EX275-360	200/400	3	50	30	6	62.5	19	32,600	135/68	168/84	506/253	AC
06EX275-660	400	3	50	30	6	62.5	19	32,600	65	81	220	AC
06EX299-360	200/400	3	50	40	6	82.5	19	45,000	189/95	236/118	690/345	AC
06EX299-660	400	3	50	40	6	82.5	19	45,000	97	121	300	AC

COMPRESSORS, CHILLERS & CONDENSERS

SEMI-HERMETIC
CARLYLE
06E, THREE PHASE
HIGH EFFICIENCY, SUCTION CUT-OFF

MODEL NO	VOLTS	PH	HZ	HP	CYL	CFM	OIL CHG (PINTS)	MAX WATTS	MAX RLA	MTA	LRA	APPL
06ET150-1()0	575	3	60	15	4	50	14	22,000	31	38	98	AC
06ET150-3()0	208-230/460	3	60	15	4	50	14	22,000	72/36	90/46	283/142	AC
06ET150-6()0	460	3	60	15	4	50	14	22,000	36	46	142	AC
06ET250-1()0	575	3	60	20	4	50	14	25,300	36	45	120	AC
06ET250-3()0	208-230/460	3	60	20	4	50	14	25,300	87/44	108/54	345/173	AC
06ET250-6()0	460	3	60	20	4	50	14	25,300	44	54	173	AC
06ET150-320	200/400	3	50	15	4	41.7	14	18,300	72/36	90/46	283/142	AC
06ET150-360	200/400	3	50	15	4	41.7	14	18,300	72/36	90/46	283/142	AC
06ET150-620	400	3	50	15	4	41.7	14	18,300	36	46	142	AC
06ET150-660	400	3	50	15	4	41.7	14	18,300	36	46	142	AC
06ET250-320	200/400	3	50	20	4	41.7	14	21,100	87/44	108/54	345/173	AC
06ET250-360	200/400	3	50	20	4	41.7	14	21,100	87/44	108/54	345/173	AC
06ET250-620	400	3	50	20	4	41.7	14	21,100	44	54	173	AC
06ET250-660	400	3	50	20	4	41.7	14	21,100	44	54	173	AC
06ET265-1()0	575	3	60	25	6	65	19	33,600	46	57	164	AC
06ET265-3()0	208-230/460	3	60	25	6	65	19	33,600	112/56	140/70	446/223	AC
06ET265-6()0	460	3	60	25	6	65	19	33,600	56	70	223	AC
06ET175-1()0	575	3	60	25	6	75	19	33,600	46	57	164	AC
06ET175-3()0	208-230/460	3	60	25	6	75	19	33,600	112/56	140/70	446/223	AC
06ET175-6()0	460	3	60	25	6	75	19	33,600	56	70	223	AC
06ET275-1()0	575	3	60	30	6	75	19	39,100	52	65	176	AC
06ET275-3()0	208-230/460	3	60	30	6	75	19	39,100	135/68	168/84	506/253	AC
06ET275-6()0	460	3	60	30	6	75	19	39,100	68	84	253	AC
06ET299-1()0	575	3	60	40	6	99	19	54,000	75	94	276	AC
06ET299-3()0	208-230/460	3	60	40	6	99	19	54,000	189/95	236/118	690/345	AC
06ET299-6()0	460	3	60	40	6	99	19	54,000	95	118	345	AC
06ET265-320	200/400	3	50	25	6	54	19	28,000	112/56	140/70	446/223	AC
06ET265-360	200/400	3	50	25	6	54	19	28,000	112/56	140/70	446/223	AC
06ET265-620	400	3	50	25	6	54	19	28,000	56	70	223	AC
06ET265-660	400	3	50	25	6	54	19	28,000	56	70	223	AC
06ET175-320	200/400	3	50	25	6	62.5	19	28,000	112/56	140/70	446/223	AC
06ET175-360	200/400	3	50	25	6	62.5	19	28,000	112/56	140/70	446/223	AC
06ET175-620	400	3	50	25	6	62.5	19	28,000	56	70	223	AC
06ET175-660	400	3	50	25	6	62.5	19	28,000	56	70	223	AC
06ET275-320	200/400	3	50	30	6	62.5	19	32,600	135/68	168/84	506/253	AC
06ET275-360	200/400	3	50	30	6	62.5	19	32,600	135/68	168/84	506/253	AC
06ET275-620	400	3	50	30	6	62.5	19	32,600	68	84	253	AC
06ET275-660	400	3	50	30	6	62.5	19	32,600	68	84	253	AC
06ET299-320	200/400	3	50	40	6	82.5	19	45,000	189/95	236/118	690/345	AC
06ET299-360	200/400	3	50	40	6	82.5	19	45,000	189/95	236/118	690/345	AC
06ET299-620	400	3	50	40	6	82.5	19	45,000	95	118	345	AC
06ET299-660	400	3	50	40	6	82.5	19	45,000	95	118	345	AC