

Motors

GENERAL PURPOSE

OIL BURNER
SPLIT PHASE
TOTALINE®

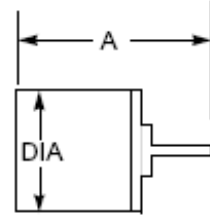
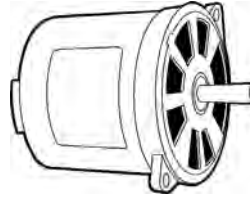
- Split phase
- 40°C ambient
- Class A insulation
- Reversible rotation by electrical reconnection
- 20" leads included

The following motors are Totally Enclosed Non Ventilated:

- P267-9782 • P267-9784

The following motor is Totally Enclosed except Open Face:

- P267-9783



PART NO	HP	VOLTS	PH	HZ	FLA	THERM PROT	RPM	SPD	ROTAT	BRGS	FRM	DIA	A
P267-9782	1/8	115	1	60	2.9	MANUAL	1725	1	REV	SLV	48N	5.6	7.4
P267-9783	1/7	115	1	60	2.4	MANUAL	3450	1	REV	SLV	48N	5.6	7.3
P267-9784	1/6	115	1	60	3.3	MANUAL	1725	1	REV	SLV	48N	5.6	7.6

MULTI-PURPOSE TOTALSAVER

TotalSaver™



PART NO	HP	VOLTAGE	FLA	RPM/SPEEDS	BEARINGS	DIMENSIONS (INCHES) (Motor height plus shaft length)	CAPACITOR REQUIRED	SHAFT LENGTH	HZ
T257-3727	1/6	208/230	1.07	1075/1	SLEEVE	10.63	5/370	6.5"X1/2"	60
T257-3728	1/4	208/230	2.00	1075/1	SLEEVE	10.63	5/370	6.5"X1/2"	60
T257-3729	1/3	208/230	2.97	1075/1	SLEEVE	11.61	7.5/370	6.5"X1/2"	60
T257-3730	1/2	208/230	3.55	1075/1	SLEEVE	12.13	10/370	6.5"X1/2"	60
T257-3731	3/4	208/230	5.50	1075/1	SLEEVE	12.64	10/370	6.5"X1/2"	60
T257-3583	1/4	115	3.6	1075/3	SLEEVE	8.66	5/370	4.5"X1/2"	60
T257-3584	1/4	208/230	1.8	1075/3	SLEEVE	8.66	5/370	4.5"X1/2"	60
T257-3585	1/3	115	6.60	1075/3	SLEEVE	8.90	5/370	4.5"X1/2"	60
T257-3586	1/3	208/230	2.9	1075/3	SLEEVE	8.90	5/370	4.5"X1/2"	60
T257-3587	1/2	115	9.5	1075/3	SLEEVE	9.88	5/370	4.5"X1/2"	60
T257-3588	1/2	208/230	3.95	1075/3	SLEEVE	9.88	5/370	4.5"X1/2"	60
T257-3589	3/4	115	10	1075/3	SLEEVE	9.88	15/370	4.5"X1/2"	60
T257-3590	3/4	208/230	5	1075/3	SLEEVE	9.88	10/370	4.5"X1/2"	60

Compressors,
Chillers, Condensers

Motors

Electrical

Heating
Components

Indoor Air
Quality

Thermostats

Oils &
Chemicals

Accessories, Supplies
& Commodities

Tools &
Instruments

Refrigeration