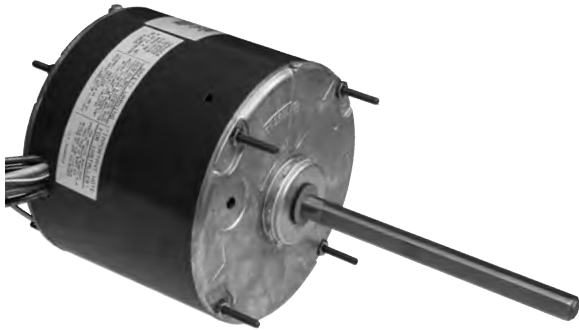
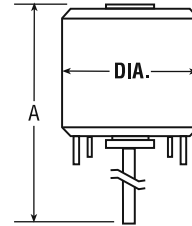


TOTALINE® CONDENSER FAN MOTORS - ALL ANGLE (60 HERTZ)



- TOTALLY ENCLOSED FOR SHAFT DOWN APPLICATIONS
- SLINGER PROTECTS BEARING WHEN MOTOR IS MOUNTED IN SHAFT UP OR HORIZONTAL POSITION (REMOVE SLINGER WHEN MOTOR IS MOUNTED IN SHAFT DOWN POSITION)
- RATED CONTINUOUS AIR OVER
- AUTOMATIC RESET THERMAL PROTECTION
- PERMANENT SPLIT CAPACITOR
- CLASS B INSULATION
- REVERSIBLE BY ELECTRICAL RECONNECTION
- 26" LEADS
- 6" SHAFT WITH 2 FULL FLATS, 90° APART
- NEMA 48Y FRAME
- SINGLE PHASE, 60 HERTZ



SINGLE SPEED

H. P.	VOLTAGE	FLA	RPM/ SPEED(S)	BRGS.	DIMENSIONS (IN.) A	CAPACITOR MFD VOLTS	CAPACITOR Part No.	MOTOR Part No.
1/6	208-230		1075/1	SLV				P257-8727
1/4	208-230	1.8	1075/1	SLV	10.7	5/370	P291-0503	P257-8728
1/3	208-230	2.4	1075/1	SLV	11.0	7.5/370	P291-0753	P257-8729
1/2	208-230	3.5	1075/1	SLV	12.2	10/370	P291-1003	P257-8730
3/4	208-230		1075/1	SLV				P257-8731

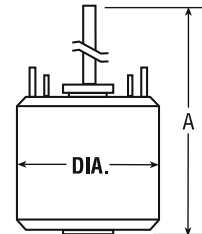
TWO SPEED

H. P.	VOLTAGE	FLA	RPM/ SPEED(S)	BRGS.	DIMENSIONS (IN.) A	CAPACITOR MFD VOLTS	CAPACITOR Part No.	MOTOR Part No.
1/4	208-230	1.6	1075/2	SLV	11.0	5/370	P291-0503	P257-8228
1/3	208-230	2.4	1075/2	SLV	11.5	7.5/370	P291-0753	P257-8229
1/2	208-230	3.8	1075/2	SLV	12.5	10/370	P291-1003	P257-8230

TOTALINE® CONDENSER FAN MOTORS

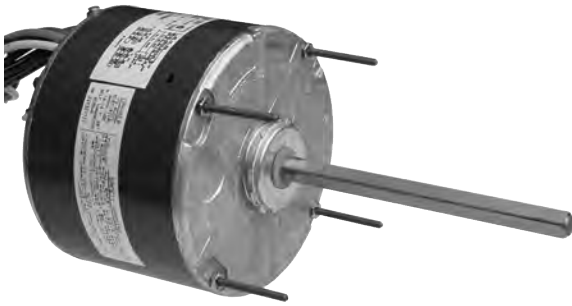
THREE PHASE

- VERTICAL SHAFT UP MOUNT
- 60°C AMBIENT
- POSITIONING SCREWS IN MOTOR
- WATER SLINGER FOR BEARING PROTECTION
- CLASS B INSULATION
- REVERSIBLE ROTATION
- NEMA 56 FRAME
- 5/8" x 6" SHAFT WITH 5" FLAT AND 5" LONG KEYWAY- KEY NOT PROVIDED
- BALL BEARINGS
- 1140 RPM/1 SPEED
- 208-230/460 THREE PHASE, 60 HERTZ

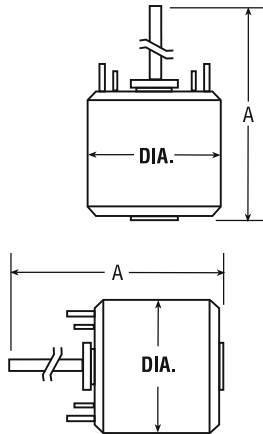


H. P.	FLA	DIMENSIONS (IN.)		MOTOR Part No.
		DIA.	A	
3/4	3.6/1.8	6.5	16.8	P257-E378
1.0	4.8/2.4	6.5	16.8	P257-E379
1-1/2	6.4/3.2	6.5	16.8	P257-E380

TOTALINE® CONDENSER FAN MOTORS (60 HERTZ)



- SUITABLE FOR VERTICAL SHAFT UP OR HORIZONTAL MOUNTING
- PERMANENT SPLIT CAPACITOR
- AUTOMATIC RESET THERMAL PROTECTION
- TOTALLY ENCLOSED SHAFT END BRACKET, OPEN OPPOSITE END
- SLINGER FOR BEARING PROTECTION
- 26" LEADS • NEMA 48Y FRAME
- REVERSIBLE BY ELECTRICAL RECONNECTION
- CLASS B INSULATION
- SINGLE PHASE, 60 HERTZ



H. P.	VOLTAGE	FLA	RPM/ SPEED(S)	BRGS.	SHAFT DIA. & LENGTH(IN.)	DIMENSIONS (IN.)		CAPACITOR MFD VOLTS	CAPACITOR Part No.	MOTOR Part No.
						DIA.	A			
1/4	208-230	1.8	1075/1	SLV	1/2 x 6	5.6	11.1	5/370	P291-0503	P257-8328*
1/4	208-230	1.5	1075/2	SLV	1/2 x 6	5.6	11.1	5/370	P291-0503	P257-8028
1/4	208-230	1.5	1075/2	BALL	1/2 x 6	5.6	11.1	5/370	P291-0503	P257-8046
1/3	208-230	2.4	1075/1	SLV	1/2 x 6	5.6	11.4	7.5/370	P291-0753	P257-8329*
1/3	208-230	2.1	1075/2	SLV	1/2 x 6	5.6	11.9	7.5/370	P291-0753	P257-8029
1/3	208-230	2.1	1075/2	BALL	1/2 x 6	5.6	11.9	7.5/370	P291-0753	P257-8031
1/3	208-230	2.2	825/1	BALL	1/2 x 6	5.6	12.1	10/370	P291-1003	P257-8026
1/2	208-230	3.6	1075/1	SLV	1/2 x 6	5.6	12.1	10/370	P291-1003	P257-8330*
1/2	208-230	3.5	1075/2	SLV	1/2 x 6	5.6	12.4	10/370	P291-1003	P257-8030
1/2	208-230	3.5	1075/2	BALL	1/2 x 6	5.6	12.4	10/370	P291-1003	P257-8032
3/4	208-230	4.1	1075/2	BALL	1/2 x 6	5.6	12.4	15/370	P291-1503	P257-8048

* Denotes high efficiency.

Compressors,
Chillers, Condensers

Motors

Electrical

Heating
Components

Indoor Air
Quality

Thermostats

Oils &
Chemicals

Accessories, Supplies
& Commodities

Tools &
Instruments

Refrigeration